



SALE PRE OWNED

burmester 50 sqm

95 000 € All Tax Included

Specifications

YEAR

1937

LENGTH

12.10

WIDTH

2.65

DRAFT

1.85

CABINS

1

BATHROOMS

1

ENGINE MANUFACTURER

NANNI

ENGINE HOURS

1000

HORSE POWER

1 X 21 CV

General

TYPE	BRAND	MODEL
Sailboat	burmester	50 sqm

Building / facilities

HULL MATERIAL	AMOUNT OF CABINS	BERTHS	BATHROOM(S)
Drink	1	3	1

Engine room

ENGINE	NUMBER OF ENGINES HORSE POWER (CV)	ENGINE YEAR	ENGINE HOURS
NANNI	1 x 21	2000	1000
FUEL			
Diesel			

Electricity / air conditioning

ENGINE BATTERY

Navigation equipment

GPS	AUTO PILOT	NAVIGATION COMPASS	SONAR
SPEEDOMETER	ANCHOR		

Galley / Laundry / Entertainment

FRIDGE

Deck equipment

MOORING WINCH

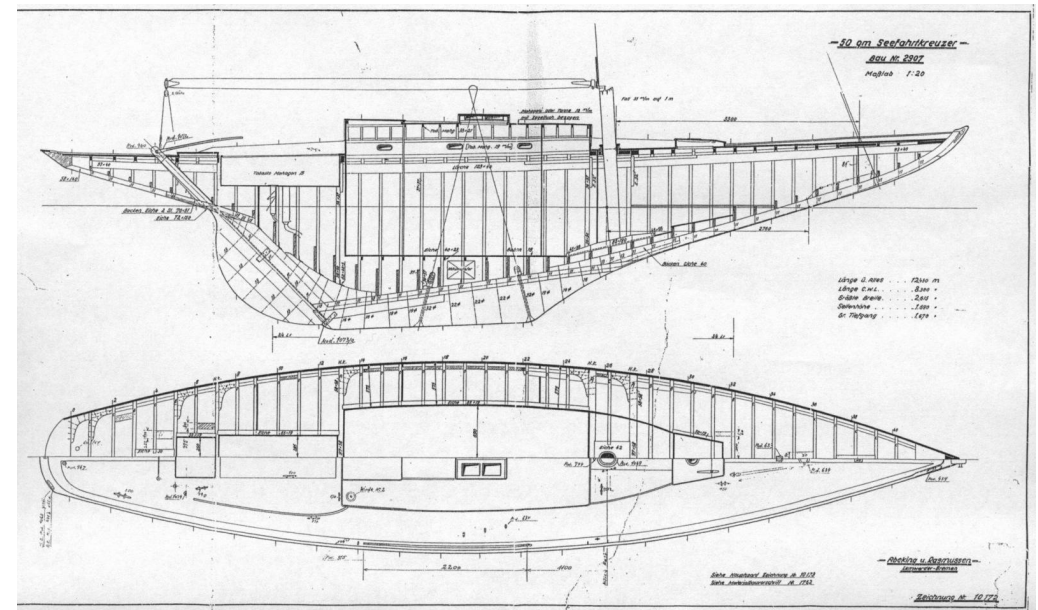
TEAK DECK
COCKPIT

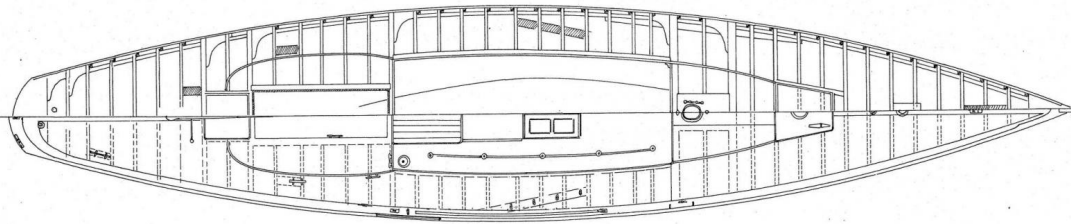
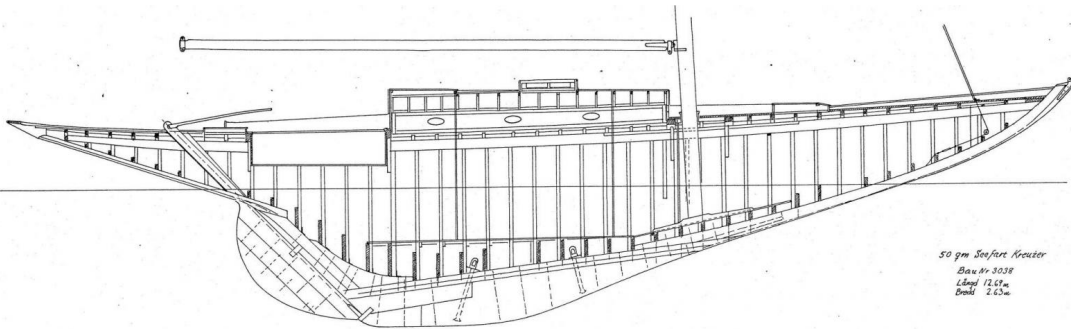
Sails

GENOA SAIL

MAIN SAIL





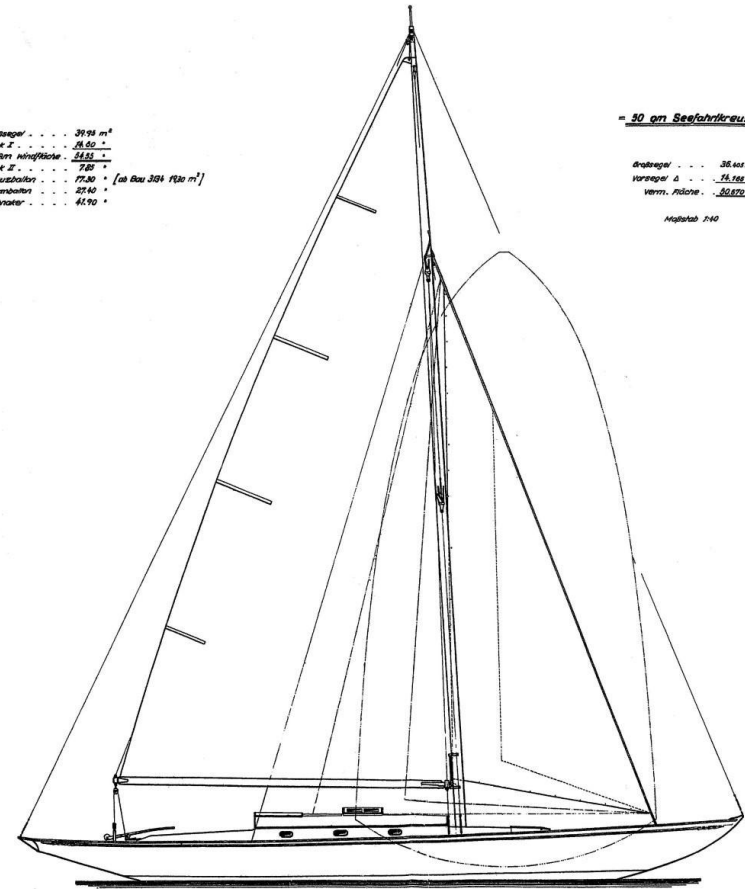


Drahtsegel 39,24 m²
 Foot I 24,50 *
 Am Masthöhe 52,83 *
 Foot II 7,89 *
 Masthöhe 77,50 * [ab Bau 304 90m m²]
 Masthöhe 27,40 *
 Spinnaker 41,90 *

— 50 qm Seefahrer Kreuzer —

Drahtsegel 36 m²
 Masthöhe Δ 51,74 *
 Masthöhe 50,870 *

Maststab 7/40



— Albrecht u. Rohmussen —
 Schiffbau- u. Maschinenbau
 Zeichnung Nr. 1017A