



SALE PRE OWNED

capelli Tempest 1000 wa

Sestante Yachts®

YACHT & SHIP CONSULTING

289 890 € All Tax Included

## Description

Inflatable boat NEW for delivery MAY 2023

The revolution of the Walk Around!

Tempest 1000 wa is majestic and imposing, large deck spaces with elements that characterize the family feeling of the Capelli ribs line such as the aft sofa, the arched line of the trincarini and the guide bench with double seats. Particular attention has been paid to the ergonomics of the seat that allows the best visibility in any driving position.

The instrument panel is generously sized and allows the installation of instruments up to 16" in accordance with the increasingly high market demands, in combination with the engine instruments selected by the customer.

The bow area presents new aesthetic, ergonomic and functional solutions, without sacrificing the safety qualities of navigation and movement on board that have always distinguished the WA range of Cantieri Capelli. The area has a chaise longue that can comfortably and comfortably accommodate two people: lateral seat containments, cup holders, stereo speakers, will guarantee total relaxation of guests (total area 2.7 m2).

The aesthetics of the deckhouse has allowed the development in depth of the cabin, allowing to have a greater height over the entire longitudinal development of the area below deck (Max. height 1.82 m – greater than 10 cm compared to the previous version).

The internal width reflects the imposing transverse volume of the deckhouse.

## Specifications

YEAR

2023

WIDTH

3.28

FUEL TANK CAPACITY

500

CABINS

1

ENGINE MANUFACTURER

Yamaha F300NSB +  
Joy

LENGTH

10.07

DRAFT

0.70

GUESTS CRUISING

18

BATHROOMS

1

HORSE POWER

2 X 300 CV

## General

TYPE	BRAND	MODEL	GUESTS CRUISING
RIB	capelli	Tempest 1000 wa	18
CURRENT LOCATION			
Sardegna - costa smeralda			

## Dimensions / Performance

WEIGHT (T)	FUEL CAPACITY (L)
3000.00	500

## Building / facilities

AMOUNT OF CABINS	BERTHS	BATHROOM(S)
1	2	1

## Engine room

ENGINE	NUMBER OF ENGINES HORSE POWER (CV)
Yamaha F300NSB + joy	2 x 300

## Electricity / air conditioning

ENGINE BATTERY

### **Navigation equipment**

---

NAVIGATION COMPASS

ANCHOR

### **Safety equipment / miscellaneous**

---

BILGE PUMP





Sestante Yachts®  
YACHT & SHIP CONSULTING



Sestante Yachts®  
YACHT & SHIP CONSULTING

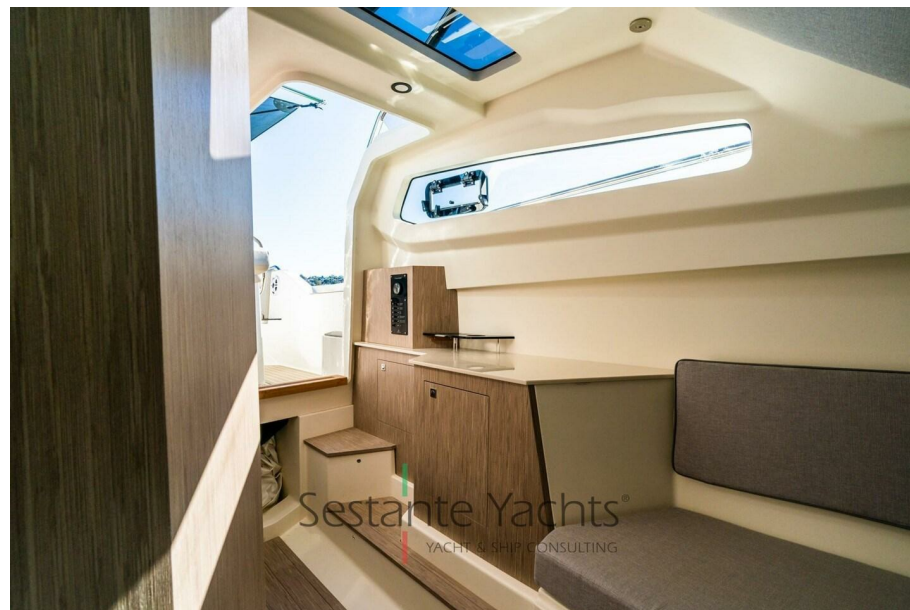
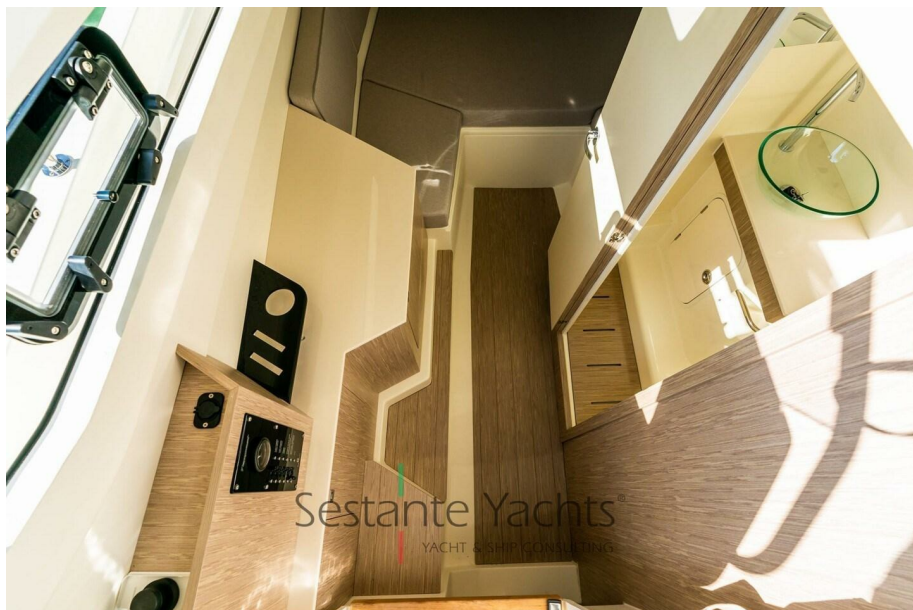


Sestante Yachts®  
YACHT & SHIP CONSULTING



Sestante Yachts®  
YACHT & SHIP CONSULTING











Sestante Yachts®  
YACHT & SHIP CONSULTING