



SALE PRE OWNED

**fjord 44 open**

**655 000 € All Tax Included**

## Description

This Fjord 44 Open is a one owner boat with very few engine hours only. Well specified - she's now for sale and available for viewing in Port Adriano / Mallorca and offered for sale with immediate delivery.

Navigation equipment:

Rudder angle indicator, Electronic engine control (EVC + 2 Volvo engines 2,5" display), Chain counter (Quick), DSC vhf (Simrad VHF RS100), Joystick, Autopilot (Simrad AP44 Pilot controller), 2 Chartplotter (Simrad multifunction display NSS evo3-12").

Staging and technical:

Engine Alarm, Bilge Alarm, Anchor (Lewmar Delta 10kg with 50 m stainless steel anchor chain and hydraulic system), Water pressure pump, Auto-Trim (Volvo Interceptor System), 6 Batteries (2x90Ah + 4x160Ah AGM), 2 Folding cleats, Draining System, Teak Side Decks, Deck Shower, Electric Flaps (Volvo Penta BTS (boat trim system)), Tender Garage (with hydraulic opening), Fire Extinguishing System (Fire buoy), Flaps Indicators, Courtesy Lights, 4 Underwater lights, Platform (HB hydraulic tender lift), 2 Automatic Bilge Pump, Entry door (sliding), Teak Cockpit, 2 Shorepower connector ((additional shorepower with AC)), Electric Windlass (with RC on steering post), swimming ladder, 2 cockpit table (Foldable with electric pedestal), 2 guard rails with gates, Horn, T-Top.

Domestic Facilities onboard:

Warm Water System, Safe, Inverter (3000W 150 Amps), 12V Outlets, 220V Outlets,

## Specifications

YEAR

**2019**

WIDTH

**4.25**

FUEL TANK CAPACITY

**900**

CABINS

**2**

ENGINE MANUFACTURER

**Volvo Penta D6-  
IPS600**

HORSE POWER

**2 X 435 CV**

LENGTH

**11.99**

DRAFT

**1.04**

GUESTS CRUISING

**12**

BATHROOMS

**1**

ENGINE HOURS

**153**

## General

---

TYPE	BRAND	MODEL	GUESTS CRUISING
Motorboat	fjord	44 open	12
CURRENT LOCATION	Majorque		

## Dimensions / Performance

---

WEIGHT (T)	FUEL CAPACITY (L)	CRUISING SPEED (ND)
9999.99	900	25

## Building / facilities

---

AMOUNT OF CABINS	BERTHS	BATHROOM(S)
2	4	1

## Engine room

---

ENGINE	NUMBER OF ENGINES HORSE POWER (CV)	ENGINE HOURS	PROPULSION
Volvo Penta D6-IPS600	2 x 435	153	Duoprop
FUEL	Diesel		

## Electricity / air conditioning

---

ENGINE BATTERY	BATTERY CHARGER
----------------	-----------------

### **Navigation equipment**

---

TRACER

AUTO PILOT

NAVIGATION COMPASS

SONAR

ANCHOR

### **Galley / Laundry / Entertainment**

---

FRIDGE

TV

### **Deck equipment**

---

DECK SHOWER

### **Safety equipment / miscellaneous**

---

BILGE PUMP











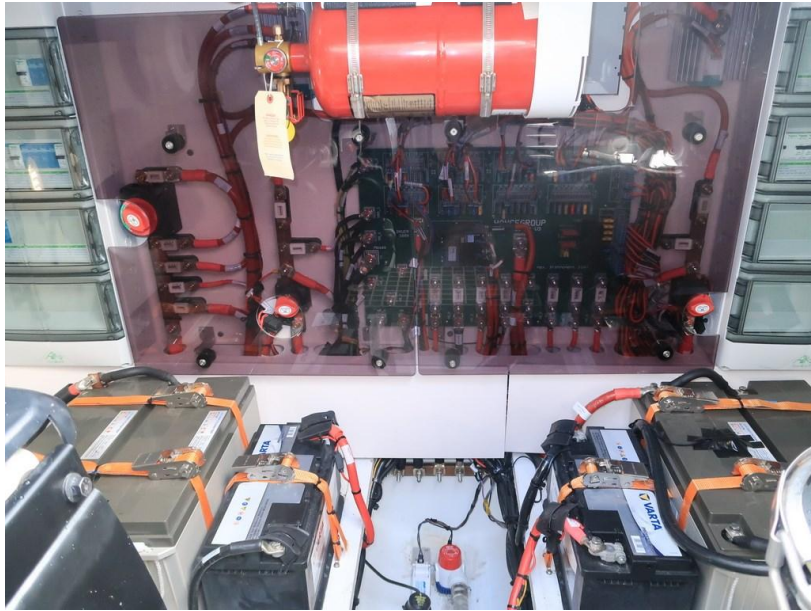




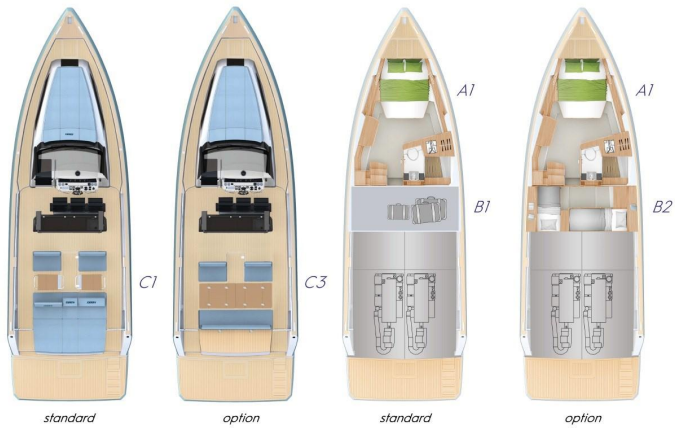








EXTERIOR + INTERIOR LAYOUTS



[www.fjordboats.com](http://www.fjordboats.com)

**FJORD 44** OPEN 