

SALE PRE OWNED

x-yachts X-55

550 000 € All Tax Included

Description

3 cabins, 3 bathrooms. Complete B&G and Simrad electronic instrumentation with Radar. Astra Yacht regatta instrumentation. Double wheelhouse with carbon wheels. Teak deck and cockpit. Max Power bow thruster. Boiler. Schenker watermaker. Eberspacher heating. Fisher-Panda generator 6.8 kw. TV system with TV. Dinghy with outboard engine.

Southern Spars carbon mast. Mast jack. Park Avenue carbon boom. Avantgarde carbon pole. Round rigging. Tuff Luff and furler. N.2 manual halyard winches. N.2 electric primary winches. N.1 electric mainsail winch. N.1 manual mainsail winch.

Bimini. Sprayhood. Awning. Lazy bag. External cushions.

Millenium carbon racing mainsail. Millenium carbon cruising mainsail. N.3 Genoa regatta. N.2 cross bows. Bow 4. N.2 Spinnaker. A0 asymmetrical spinnaker. Hood mainsail. Hood bow.

Yanmar 80hp engine with S-drive, Flexofold 3 folding blades propeller, 4302 engine hours. Annual servicing and antifouling. Complete engine overhaul in January 2020.

Boat in excellent internal and external condition. Constant maintenance. Single owner. Private use only.

The sale price does not include agency fees.

Navigation equipment:

AIS (Simrad), 3 Compass, On-Board Computer (B&G+ASTRA YACHT), Odometer

Specifications

YEAR

2008

WIDTH

4.57

FUEL TANK CAPACITY

400

BATHROOMS

1

ENGINE HOURS

4302

LENGTH

16.76

DRAFT

2.90

CABINS

3

ENGINE MANUFACTURER

Yanmar 4JH4-HTE

HORSE POWER

1 X 80 CV

General

TYPE	BRAND	MODEL	CURRENT LOCATION
Sailboat	x-yachts	X-55	Liguria

Dimensions / Performance

WEIGHT (T)	FUEL CAPACITY (L)
9999.99	400

Building / facilities

AMOUNT OF CABINS	BERTHS	BATHROOM(S)
3	6	1

Engine room

ENGINE	NUMBER OF ENGINES HORSE POWER (CV)	ENGINE HOURS	PROPULSION
Yanmar 4JH4-HTE	1 x 80	4302	Flexofold 3 folding blades
FUEL	BOW THRUSTER		
Diesel			

Electricity / air conditioning

ENGINE BATTERY	BATTERY CHARGER	GENERATOR	HEATING SYSTEM
----------------	-----------------	-----------	----------------

Navigation equipment

GPS	TRACER	RADAR	AUTO PILOT
VHF	NAVIGATION COMPASS	SONAR	WIND INSTRUMENTS
SPEEDOMETER	ANCHOR		

Galley / Laundry / Entertainment

OVEN	FRIDGE	TV
------	--------	----

Deck equipment

DECK SHOWER	BIMINI	CANOPY
-------------	--------	--------

Safety equipment / miscellaneous

EPIRB	LIFE RAFT	BILGE PUMP
-------	--------------	------------

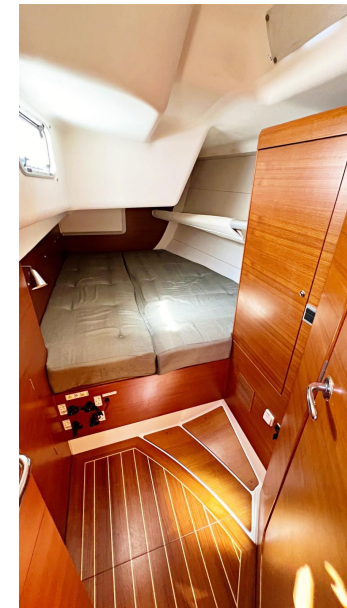
Sails

GENOA SAIL	SPINNAKER	MAIN SAIL
------------	-----------	-----------













Copyright - RCS
© Casa del Rey A&M Marine
© Photo Marine/Casa del Rey A&M Marine

