



SALE PRE OWNED

abati yachts 46 newport s

Description

Excellent condition, few engine hours, very well equipped.

Recent instrumentation.

8 months in the shed.

Version 2 double cabins, 2 bathrooms, guest/crew cabin with bathroom

Navy blue hull. Sundeck at the bow and stern.

Periodic maintenance.

Recent teak deck.

Large dinette with circular sofa with extendable table.

Kitchen in the hallway on the floor of the cabins equipped with refrigerator and freezer, oven and ceramic hob.

Double master cabin amidships with bathroom with shower.

Double guest cabin in the bow with bathroom. Guest bathroom.

Large teak cockpit with table and chairs.

Tendering with hauling and launching mechanism.

Navigation equipment:

Electronic engine control, Chain counter, Display, Depth Sounder (Raymarine recente), Autopilot (Raymarine), Plotter with GPS antenna (Raymarine recente), Radar (Raymarine recente), VHF Radio (Raymarine), Co-pilot seat.

Specifications

YEAR

2008

WIDTH

4.60

FUEL TANK CAPACITY

1600

BATHROOMS

1

ENGINE HOURS

400

LENGTH

13.90

DRAFT

1.20

CABINS

2

ENGINE MANUFACTURER

MAN R6-550

HORSE POWER

2 X 550 CV

General

TYPE	BRAND	MODEL	CURRENT LOCATION
Motorboat	abati yachts	46 newport s	Mar tirreno

Dimensions / Performance

WEIGHT (T)	FUEL CAPACITY (L)	CRUISING SPEED (ND)	TOP SPEED (ND)
9999.99	1600	26	31

Building / facilities

HULL MATERIAL	SUPER STRUCTURE MATERIAL	DECK MATERIAL	AMOUNT OF CABINS
Vetroresina	Vetroresina	Vetroresina +teak	2
BERTHS	BATHROOM(S)		
4	1		

Engine room

ENGINE	NUMBER OF ENGINES HORSE POWER (CV)	ENGINE HOURS	FUEL
MAN R6-550	2 x 550	400	Diesel
STERN THRUSTER	BOW THRUSTER		

Electricity / air conditioning

ENGINE BATTERY	BATTERY CHARGER	GENERATOR	AIR CONDITIONING

Navigation equipment

RADAR	AUTO PILOT	VHF	NAVIGATION COMPASS
SONAR	SPEEDOMETER	ANCHOR	

Galley / Laundry / Entertainment

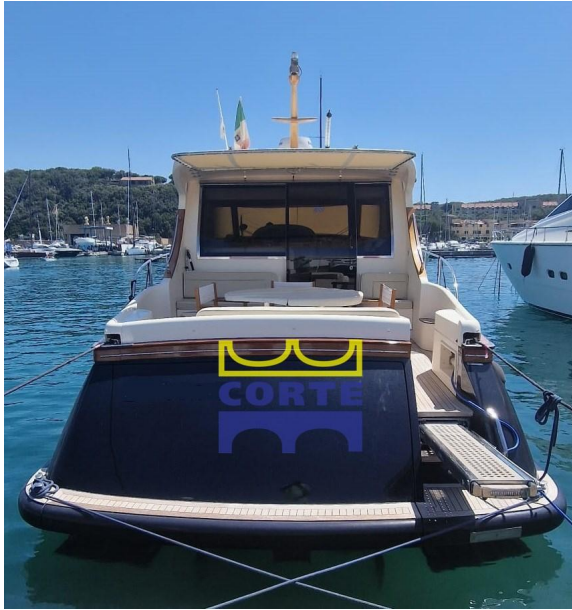
OVEN	FREEZER	FRIDGE	TV
------	---------	--------	----

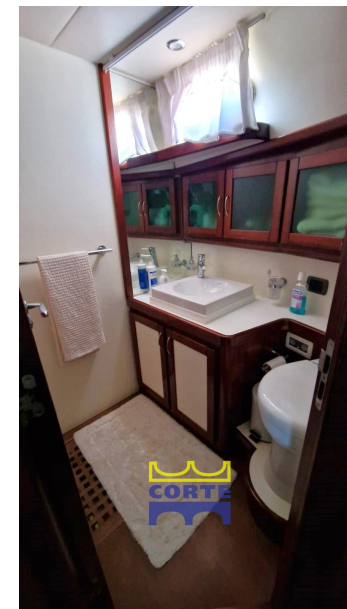
Deck equipment

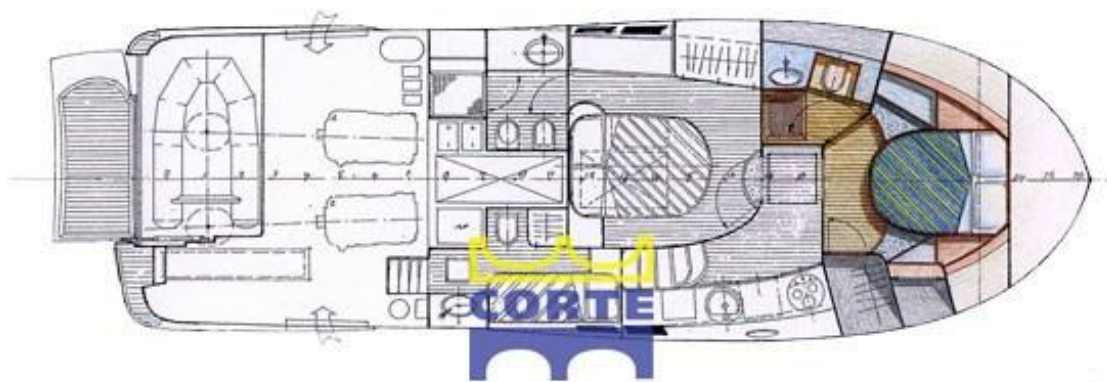
DECK SHOWER

Safety equipment / miscellaneous

BILGE PUMP







Versione 2 camere + marinaio