



SALE PRE OWNED

overmarine Mangusta 165

8 900 000 € All Tax Included

Description

Step aboard ZEUS I, a stunning 2009 creation from the sought- after Mangusta 165 range, and embark on a journey of opulence and exhilaration. As one of the world's largest open yachts, ZEUS I redefines luxury at sea.

- Stunning example from the popular Mangusta 165 series.
- Limited private use only.
- Top speed in excess of 35 knots.
- Accommodation for up to 12 guests in 5 staterooms with ensuites.
- Sleeps 9 crew in 5 cabins
- Very large Master Suite plus private office.
- Dedicated cinema room.
- Expansive exterior deck areas with various options for sun lounging and dining.
- 2 large heated spa pools on the aft deck and foredeck.
- Extendable hydraulic diving board on starboard side.
- Exclusively owner-used
- EU VAT paid.

Navigation equipment:

AIS, 2 Electronic engine control, 2 Chain counter, DSC vhf, Intercom, Co-pilot seat.

Crewing and technical:

Specifications

YEAR

2009

WIDTH

9.20

FUEL TANK CAPACITY

40000

BATHROOMS

1

HORSE POWER

3 X 3647 CV

LENGTH

49.90

DRAFT

1.90

CABINS

5

ENGINE MANUFACTURER

MTU 16V4000 M90

General

TYPE	BRAND	MODEL
Motorboat	overmarine	Mangusta 165

Dimensions / Performance

WEIGHT (T)	FUEL CAPACITY (L)	CRUISING SPEED (ND)	TOP SPEED (ND)
9999.99	40000	28	37

Building / facilities

HULL MATERIAL	SUPER STRUCTURE MATERIAL	DECK MATERIAL	AMOUNT OF CABINS
Vetroresina	Vetroresina	Vetroresina	5
BERTHS	BATHROOM(S)		
12	1		

Engine room

ENGINE	NUMBER OF ENGINES HORSE POWER (CV)	FUEL	BOW THRUSTER
MTU 16V4000 M90	3 x 3647	Diesel	

Electricity / air conditioning

AIR CONDITIONING

Navigation equipment

AUTO PILOT

VHF

SONAR

WIND
INSTRUMENTS

FLYBRIDGE

Galley / Laundry / Entertainment

OVEN

MICROWAVE

FREEZER

FRIDGE

TV

Deck equipment

DECK SHOWER

BIMINI

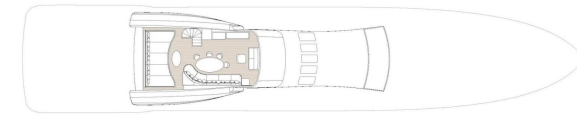
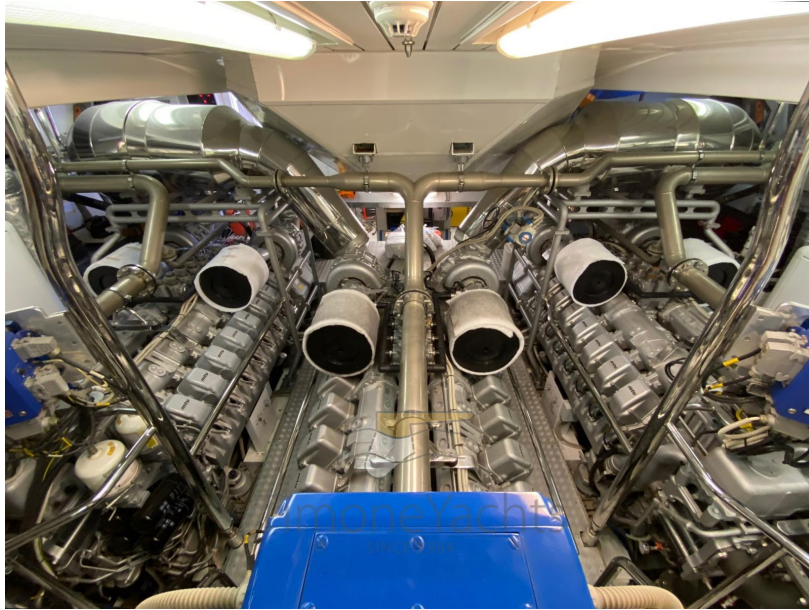
CANOPY



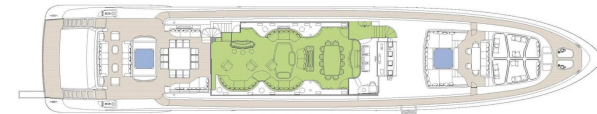








SUN DECK



MAIN DECK



LOWER DECK

timoneyachts
SINCE 1984

■ GUEST AREAS ■ MASTER SUITE ■ VIP SUITE ■ GUEST CABINS ■ MASTER SUITE OFFICE ■ CINEMA ■ JACUZZI

