



SALE NEW

mandayachts S05

## Description

The Mandayachts S05 is waiting for you to experience the sea in a whole new dimension. In summary, the S05 represents an innovative proposal in the nautical landscape, offering a unique combination of style, comfort and performance. Its versatility makes it ideal for owners looking for a boat for day trips, weekends at sea or cruises. Imagine your gaze caressing the pure white hull of the Mandayachts S05, elegantly moored in a luxury marina. Its sinuous lines, designed by the master Giovanni Ceccarelli, blend with the water to create a work of art in motion. The sharp bow cuts through the waves with confidence, while the stern widens into a top-class beach club, a real invitation to relax and have fun. Getting on board is like stepping into a dream. The T-top, large and welcoming, is furnished with an L-shaped sofa on the port side and another sofa that converts into a sundeck towards the stern. In the middle is the dining table perfect for enjoying an aperitif at sunset or a lunch with friends. The real surprise, however, is at the stern. The beach club equipped with shower, ladder is a paradise for lovers of water sports and sun.

### Interiors:

The interior of the Mandayachts S05 is a masterpiece of design and functionality. The layout is designed to make the most of every square centimeter and to create a refined and welcoming environment.

Brightness is the undisputed protagonist. The wide aft door offers stunning views of the sea. The precious materials, such as wood and marble, are elegantly combined with the modern and sinuous lines of the furnishings. The galley,

## Specifications

YEAR

2024

WIDTH

4.82

FUEL TANK CAPACITY

1800

CABINS

2

ENGINE MANUFACTURER

Volvo Penta D8/600

HORSE POWER

2 X 600 CV

LENGTH

15.00

DRAFT

0.86

GUESTS CRUISING

14

BATHROOMS

1

ENGINE HOURS

1

## General

TYPE	BRAND	MODEL	GUESTS CRUISING
Motorboat	mandayachts	S05	14
CURRENT LOCATION			
Italia			

## Dimensions / Performance

WEIGHT (T)	FUEL CAPACITY (L)	CRUISING SPEED (ND)	TOP SPEED (ND)
9999.99	1800	28	37

## Building / facilities

HULL MATERIAL	SUPER STRUCTURE MATERIAL	DECK MATERIAL	AMOUNT OF CABINS
Vetroresina	Carbonio	TEAK	2
BERTHS	BATHROOM(S)		
4	1		

## Engine room

ENGINE	NUMBER OF ENGINES HORSE POWER (CV)	ENGINE HOURS	PROPULSION
Volvo Penta D8/600	2 x 600	1	Volvo Penta
FUEL	BOW THRUSTER		
Diesel			

## Electricity / air conditioning

---

ENGINE BATTERY

BATTERY  
CHARGER

GENERATOR

AIR CONDITIONING

HEATING SYSTEM

## Navigation equipment

---

GPS

TRACER

RADAR

AUTO PILOT

VHF

NAVIGATION COMPASS

SONAR

SPEEDOMETER

ANCHOR

## Galley / Laundry / Entertainment

---

OVEN

FREEZER

FRIDGE

TV

## Deck equipment

---

DECK SHOWER

## Safety equipment / miscellaneous

---

EPIRB

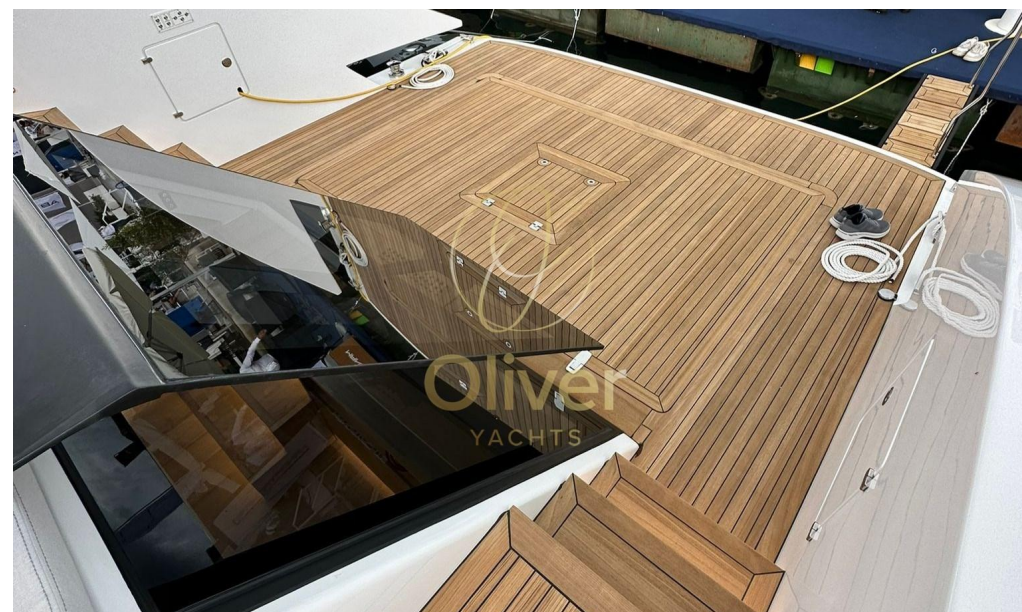
LIFE  
RAFT

BILGE PUMP

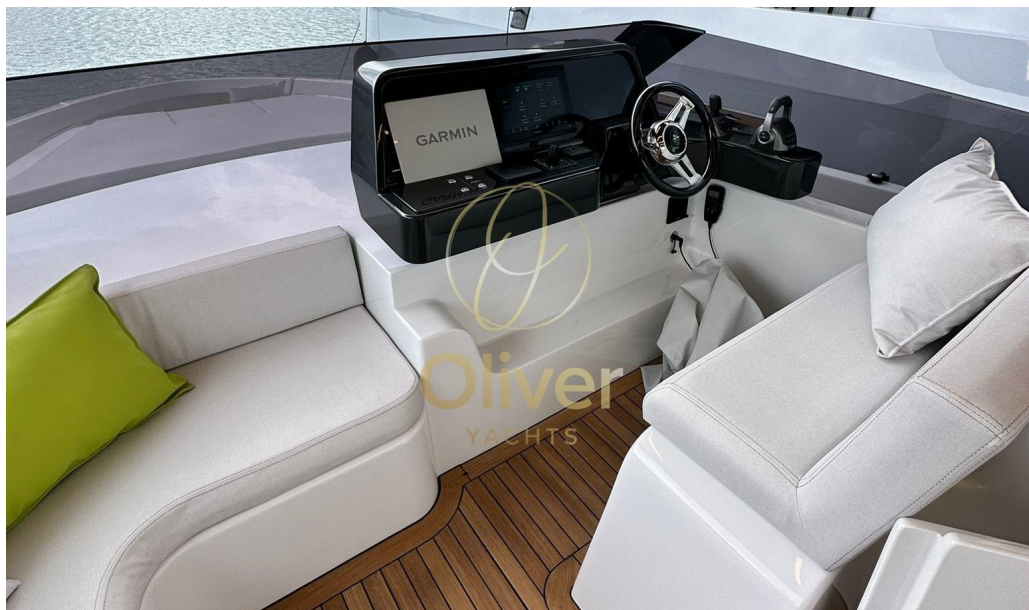








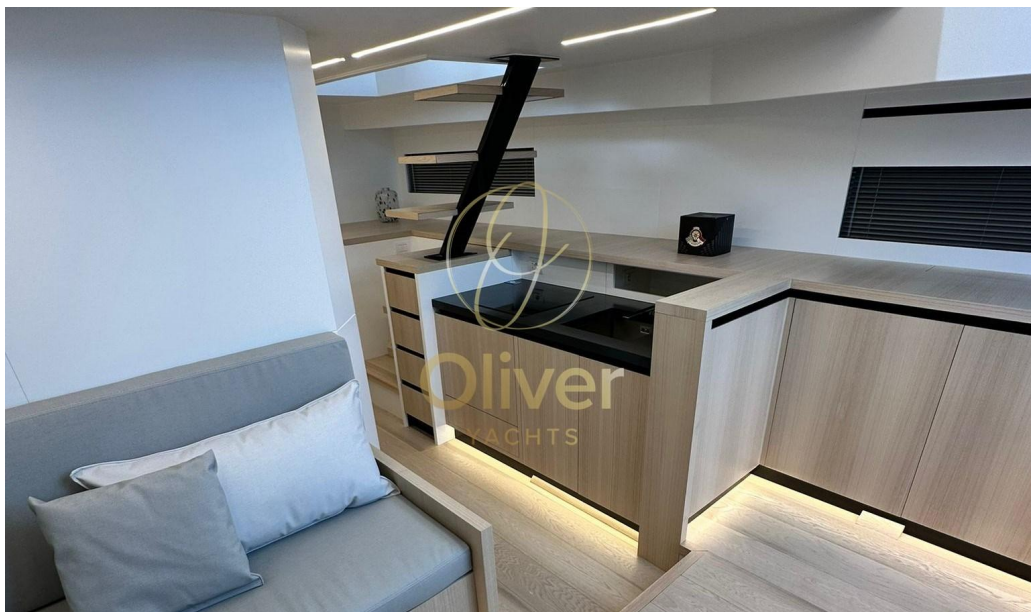


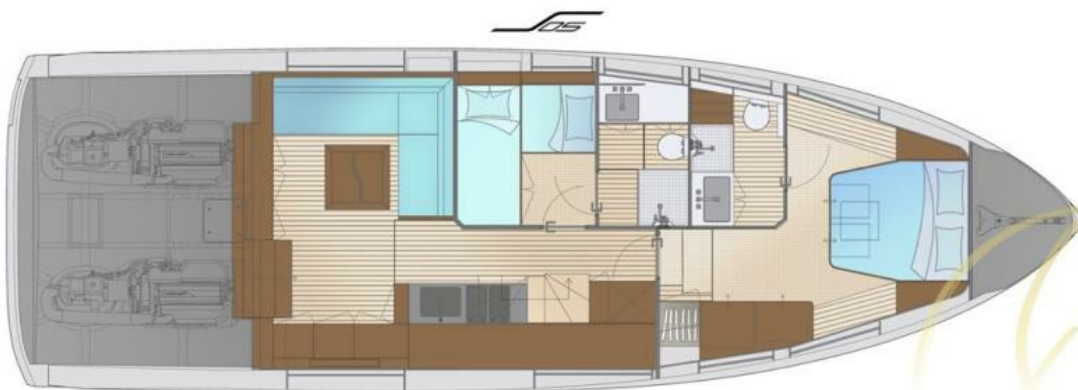




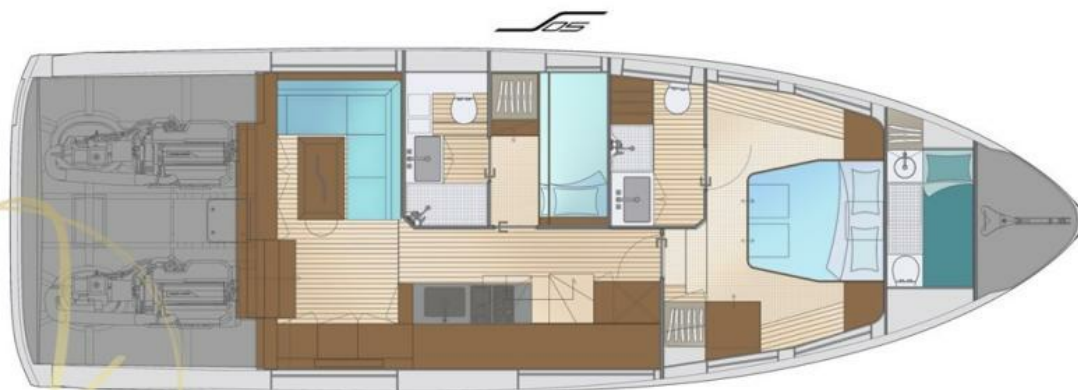








LAYOUT A



LAYOUT B



LAYOUT D



LAYOUT C