



SALE PRE OWNED

**beneteau Swift trawler 42**

**225 000 € + VAT**

## Description

SWIFT TRAWLER 42, 2009, VOLVO D4, 2 x 300 hp (1128 hrs), Bow thruster, 1 forward owner cabin, 1 guest cabin (1 double bed & 1 bunk removable single bed), 2 heads (toilets + shower), Laminated floorboards, Altra Chanvre saloon upholstery, Saloon table convertible in double bed, Teak slatted cockpit, Flying bridge canvas (from 2023), Electric windlass - LEWMAR, Flying bridge & wheel house windlass remote controls, Flying bridge bimini top, Flying bridge cushions, Flying bridge seat cover, Full cockpit enclosure, Windscreen covers., Raymarine ST6002 in board autopilot , ST40 Raymarine wind captor, GPS and chartplotter (wheel house) - RAYMARINE EI20, GPS and chartplotter (flying bridge) - RAYMARINE E80, Electronic navigation charts, Radar with radome radar fitted on mast - RAYMARINE, AIS Class B system - SIMRAD 50, DSC VHF (twin station) - RAYMARINE RAY240E, Radio CD AUX USB + speakers, Cockpit speakers (Radio CD), Television (saloon) & GLOMEX antenna, Fridge unit 12 V (front opening door), Water heater 220 V and engine heat exchanger, Hot and cold pressurized water, 3 burners cooker + oven, 220 V shore power + battery charger - Cristec 40A, Interior 220 sockets, Heating system WEBASTO (2 units), Holding tank, Electric toilets (owner head), Hot and cold cockpit shower, 6 men liferaft - Type 2, Kobra 25 Kg anchor + 90m lenght of chain (2017), Rope cutters on shafts (2017), Fenders and warps, Owner boat, never chartered, Located South Brittany - France, For more information or to make an appointment for a visit, contact : Jean-Baptiste Lemaire + 33 6 10 25 00 03 - [jb@antipode-yachts.com](mailto:jb@antipode-yachts.com)

## Specifications

YEAR

2009

WIDTH

4.17

CABINS

2

ENGINE HOURS

1128

LENGTH

13.60

FUEL TANK CAPACITY

1500

ENGINE MANUFACTURER

VOLVO D4

HORSE POWER

0 X 2 X 300 CV

**General**

---

TYPE	BRAND	MODEL	CURRENT LOCATION
Motorboat	beneteau	Swift trawler 42	Bretagne sud

**Dimensions / Performance**

---

WEIGHT (T)	FUEL CAPACITY (L)
9999.99	1500

**Building / facilities**

---

HULL MATERIAL	HULL COLOR	AMOUNT OF CABINS
POLYESTER	white	2

**Engine room**

---

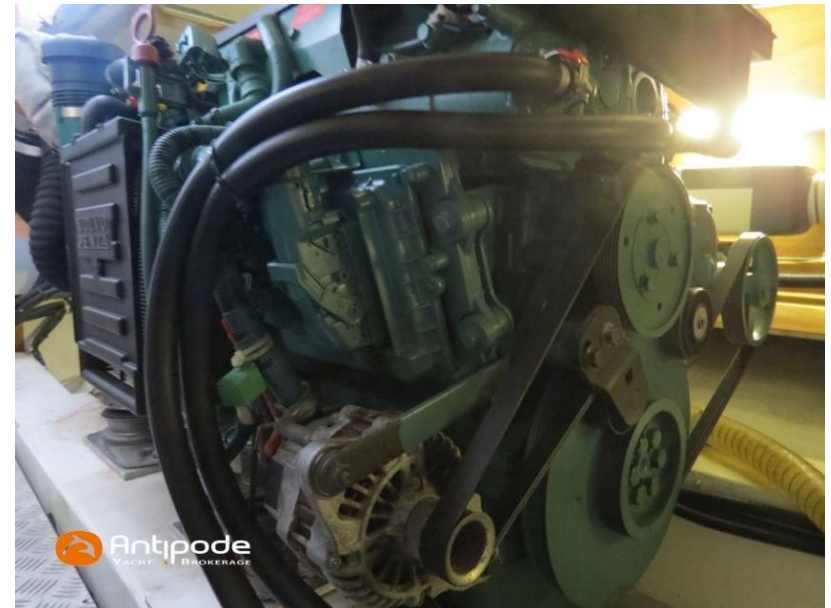
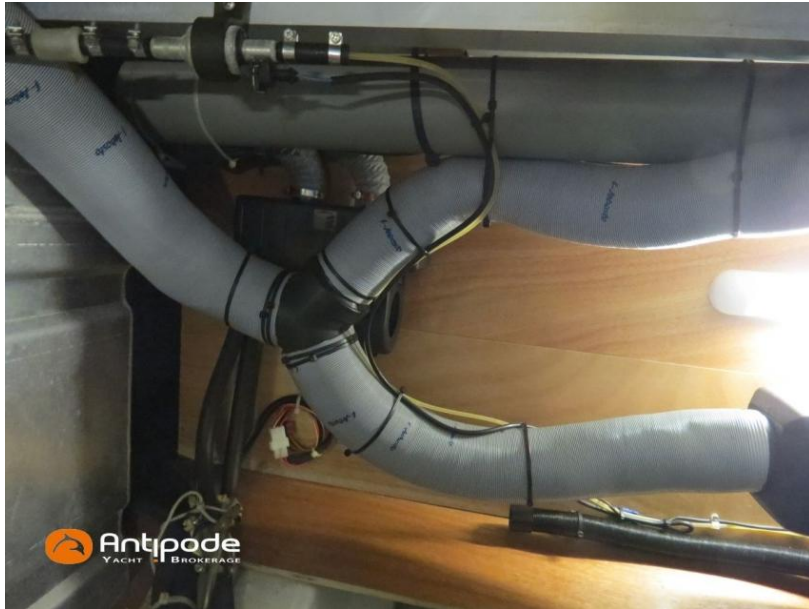
ENGINE	NUMBER OF ENGINES HORSE POWER (CV)	ENGINE HOURS	PROPULSION
VOLVO D4	0 x 2 x 300	1128	Ligne d'arbre















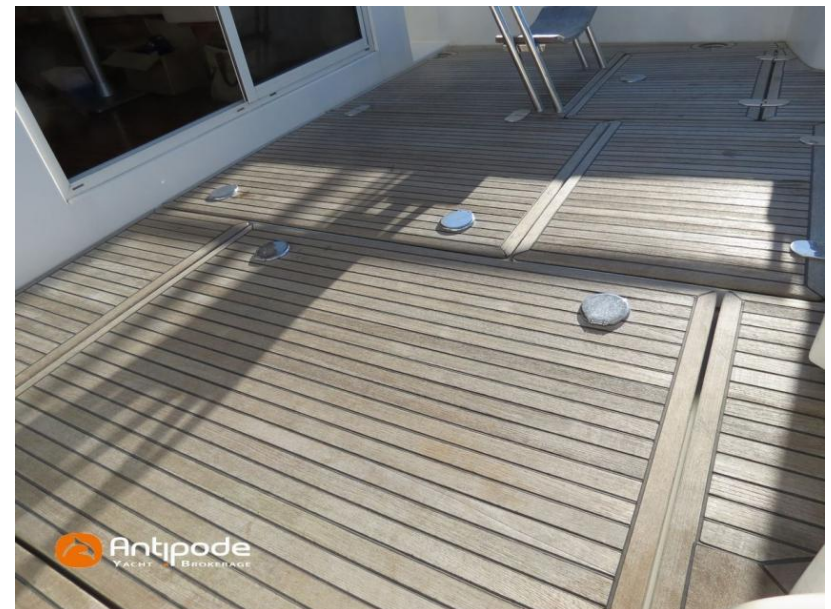
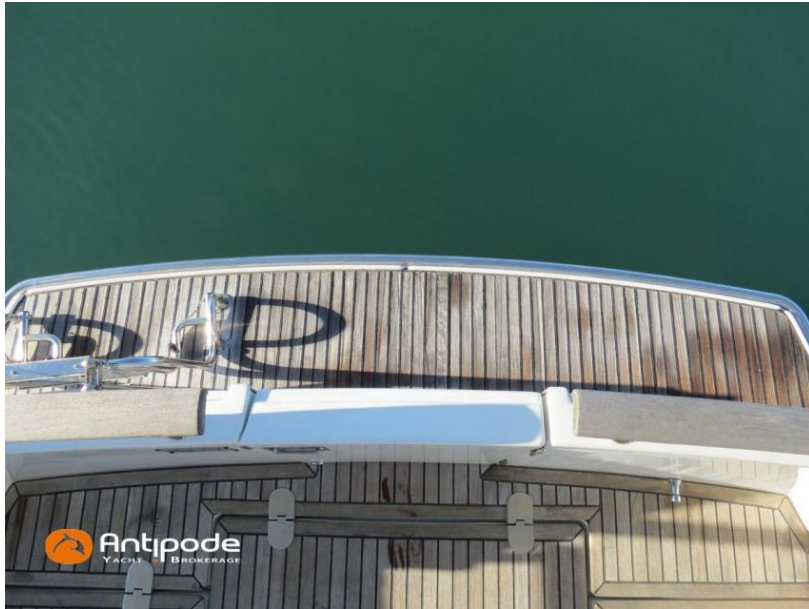












FR-BEYD4205G809

