



SALE PRE OWNED

beneteau Swift trawler 35

289 000 € + VAT

Description

SWIFT TRAWLER 35, 2020, first hand, never chartered, CUMMINS QSB 6-7 , 425 hp (535 hrs), Bow thruster, Aft truster, Interior layout version 1 forward cabin, 1 side cabin, Finition confort 2020, ALPI interior woodwork, Saloon upholstery, partition curtain, Saloon sofa convertible in double bed, Teak slatted cockpit floor, Cockpit electric windlass remote control, Flying bridge, 2x folding cockpit benches , Flying bridge sun bathing mastresses, Flying bridge arch supporting antennas, Full cockpit enclosure, Raymarine in board autopilot, GPS and chartplotter (nav station) - 12, GPS and chartplotter (Flybridge) - 12, Radar with radome radar fitted on mast, AIS Transponder CLASS B (emission and reception), Rear camera, Trim tab, 2 nd fridge unit 12 V - flybridge, Hot and cold pressurized water, 2x Service batteries - 140 Amp 2020, 12 V to 220 V Inverter, Battery controller, Heating system EBERSPACER, Electric toilets, Fresh water inlet, cockpit Fresh water pump, Dinghy - Twin fast cat 280 2020, Located Brittany. For more information or to make an appointment for a visit, contact : François Mouchel 06 62 30 97 30 - francois@antipode-yachts.com

Specifications

YEAR

2020

WIDTH

3.96

CABINS

2

ENGINE HOURS

535

LENGTH

11.29

FUEL TANK CAPACITY

800

ENGINE MANUFACTURER

CUMMINS QSB 6-7

HORSE POWER

0 X 425 CV

General

TYPE	BRAND	MODEL	CURRENT LOCATION
Motorboat	beneteau	Swift trawler 35	Bretagne

Dimensions / Performance

WEIGHT (T)	FUEL CAPACITY (L)
8252.00	800

Building / facilities

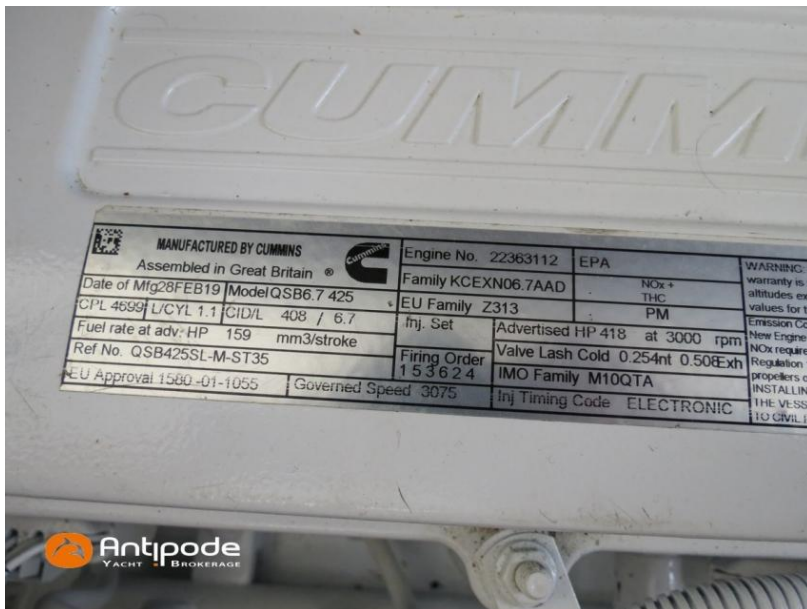
HULL MATERIAL	HULL COLOR	AMOUNT OF CABINS
POLYESTER	white	2

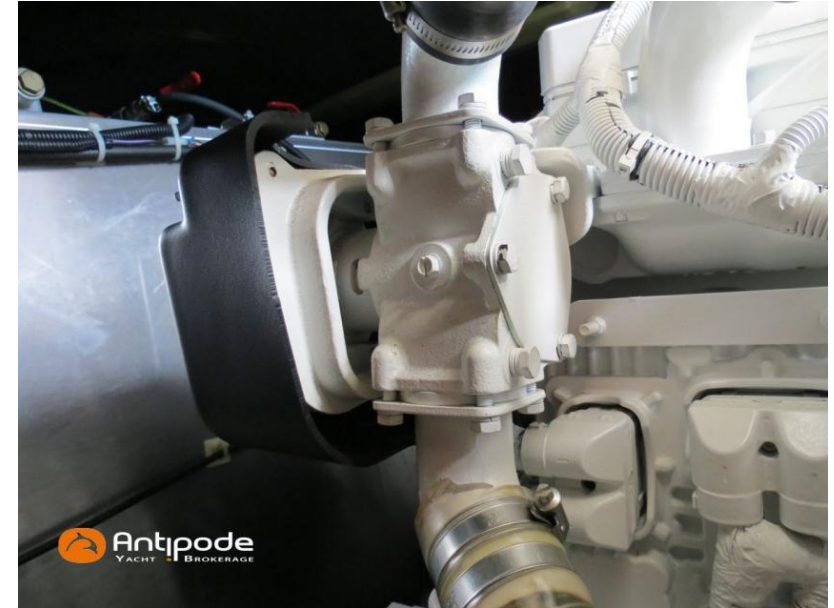
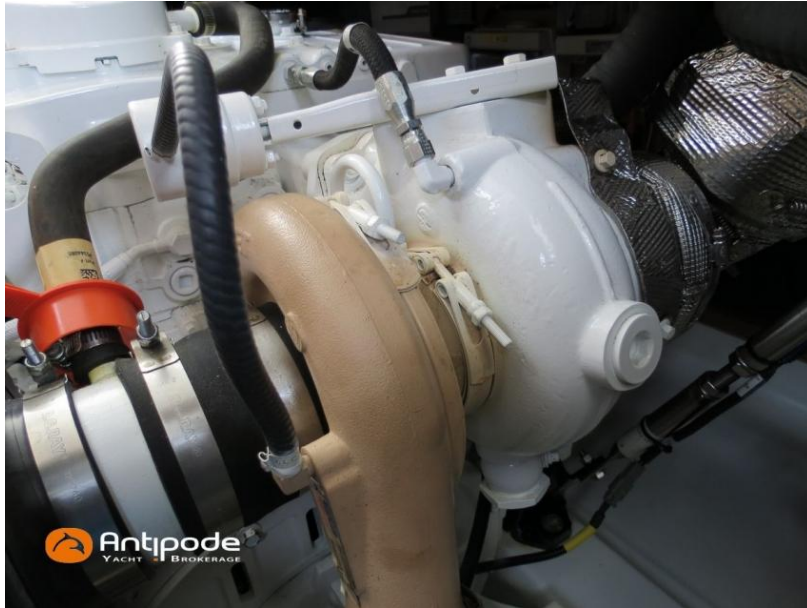
Engine room

ENGINE	NUMBER OF ENGINES HORSE POWER (CV)	ENGINE HOURS	PROPULSION
CUMMINS QSB 6-7	0 x 425	535	Ligne d'arbre







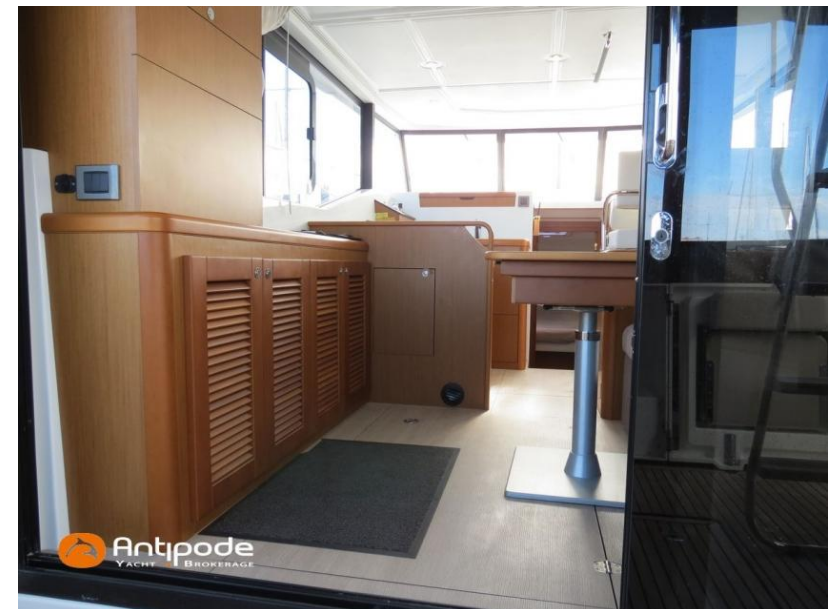




















 **Antipode**
YACHT BROKERAGE