



SALE PRE OWNED

lagoon 50

680 000 € All Tax Included

Description

Manufacturer Provided Description This new boat is the perfect compromise between the emblematic 450 model and the 52. She offers an attractive option to navigators in search of a large "seaworthy and modern" owner's boat. With her new visual identity, rigging and hull design, she provides increased performance, comprising a unique brand signature. Indeed, the 50's elegance seduces thanks to the bevelled shape of her hulls, generous volumes and panoramic views, more than ever enhanced. With unparalleled accommodation possibilities, this new model is available in three, four or even... six cabins! EXTERIOR : COMFORTABLE AND FUNCTIONAL A flybridge with two secure accesses and a helm station provides perfect visibility. And behind the helm station, a huge modular recreation area conceals a storage area large enough to store all the cushions. A large open cockpit facing out to sea, large stern skirts enable easy access to the boat and a large modular dining area with removable bench seats to welcome children and adults alike. A second cockpit for further enjoyment of the foredeck with dual function: seating or deck chair position, flush with the forward trampoline. Vast storage space under most of the cockpit and flybridge seats. INTERIOR : GENEROUS VOLUMES AND LUMINOSITY The spaciouly designed layout reveals innovative architecture where every detail has been planned to create a warm, homely atmosphere. The design enables anyone to choose their desired accommodation layout, with three, four, five or even six cabins! An innovative saloon concept on two levels, providing two separate but communicating areas: a large galley that opens onto the cockpit on one side, and a slightly elevated lounge area for enhanced panoramic vision, which can

Specifications

YEAR

2019

WIDTH

8.10

BATHROOMS

4

HORSE POWER

2 X 80 CV

LENGTH

15.24

CABINS

6

ENGINE MANUFACTURER

YANMAR 4JH80

General

TYPE	BRAND	MODEL	CURRENT LOCATION
Sailboat	lagoon	50	Martinique

Dimensions / Performance

AIR DRAFT (M)	WEIGHT (T)
87.00	21.00

Building / facilities

HULL MATERIAL	AMOUNT OF CABINS	BATHROOM(S)
Fiberglass	6	4

Engine room

ENGINE	NUMBER OF ENGINES HORSE POWER (CV)	ENGINE YEAR	PROPULSION
YANMAR 4JH80	2 x 80	2019	Inboard
PROPELLERS	FUEL		
3 Blade	Diesel		

Engine room description

YANMAR 4JH80 de 2019

80 hp

diesel

Inboard

3 Blade

YANMAR 4JH80 de 2019

80 hp

diesel

Inboard

3 Blade

Deck equipment

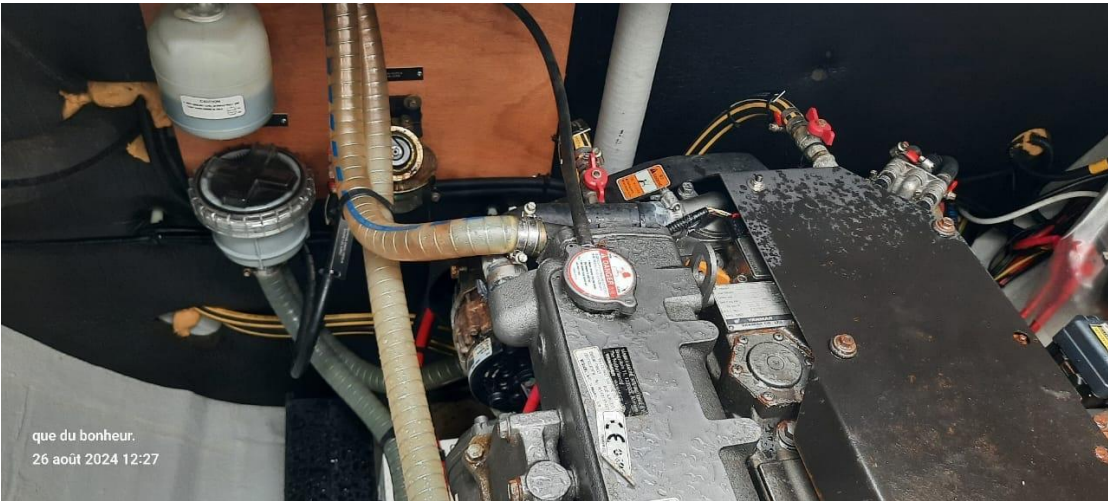
WINDLASS



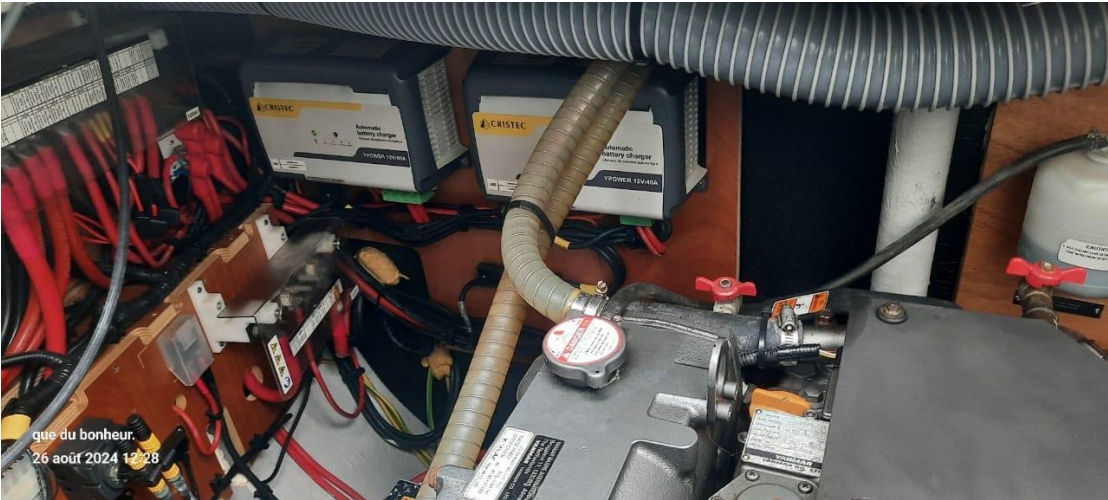




que du bonheur.
26 août 2024 12:22



que du bonheur.
26 août 2024 12:27



que du bonheur.
26 août 2024 12:28



que du bonheur.
26 août 2024 12:28

