



SALE PRE OWNED

custom Foiler 50

68 000 € All Tax Included

Description

Additional Information General Constructor : Dufour Alu (17 , France) Architect : Sylvestre LANGEVIN Launched: 1983 Material hull, deck, beam: aluminum (AG3 and AG4) Foils in cast aluminum accessible through hatches Hull color: white Bridge color: sand Flag: French Dimensions Length: 15.15 m (50') Width: 12 m + foils = 13 m Draft: 1.20 m to 2.70 m Weight: approx. 5.5 tons Center board sword in central hull in front of the mast Y- shaped foils Sails & Rigging Mast: aluminum, Height: 21m Upwind sails: 150 m² Sail downwind: 250 m². Mainsail: Hydranet 2004, surface area 85 m2 Front sails: staysail and solent in Hydranet (2014) Asymmetric spinnaker (2014), new, socked Small gennaker, Large gennaker Storm Jib Safety Approved in 1st category Flairs in 1st category Liferaft: 4 seats (rigid) Bilge pump: 2 hand pumps Extinguisher: 2 x 2kg Main and masthead lights Engine Z-Drive engine, Volvo, 27 hp, diesel, accessible from cockpit Engine serviced: piston rings, connecting rod bearings and overhaul of the engine in 2013. Tank: 40 L (shelf under the companionway) Electricity 3 batteries (3x110A), inside under the cockpit, in front of the motor Electro panel at chart table Electronics NKE control unit (log, depth sounder, wind instrument) Wind vane, VHF, AIS, GPS NLR 1 x NKE pilots Radar 2 x anchors Interior equipment: 1 stove (gimballed) ,1 x folding berth on port side easily accessible from the cockpit and 1 x double berth in center, 1 x folding chart table, shelves on port side, light floors Goyot hatches, portholes on each side (very good visibility from inside), 1x emergency hatch Floats, central beam with technical hatches (uninhabitable) Boat is awarded with the label « Bateau d'intérêt patrimonial » (BIP): exemption of French annual navigation fee ,including Outremer tax

Specifications

YEAR

1983

WIDTH

11.89

ENGINE MANUFACTURER

VOLVO

LENGTH

15.24

BATHROOMS

1

HORSE POWER

1 X 27 CV

General

TYPE	BRAND	MODEL	CURRENT LOCATION
Sailboat	custom	Foiler 50	Caribbean

Building / facilities

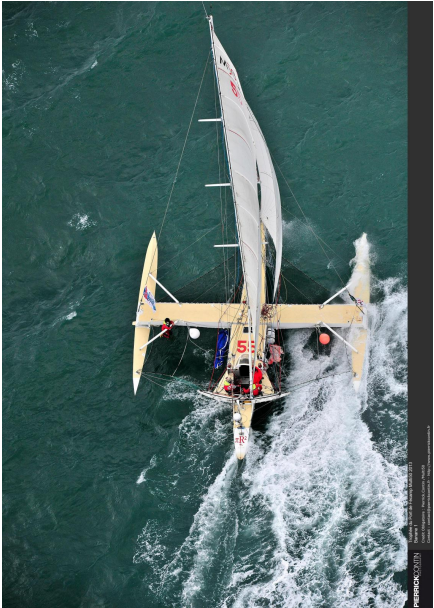
HULL MATERIAL	BATHROOM(S)
Aluminum	1

Engine room

ENGINE	NUMBER OF ENGINES HORSE POWER (CV)	FUEL
VOLVO	1 x 27	Diesel


Engine room description

VOLVO
27 hp
diesel








 Multi 50, Trophée Prince de Bretagne Côtes d'Armor, Saint Quay Portrieux le 22/08/2014
© B.Stichelbaut / Multi 50



 Multi 50, Trophée Prince de Bretagne Côtes d'Armor, Saint Quay Portrieux le 22/08/2014
© B.Stichelbaut / Multi 50

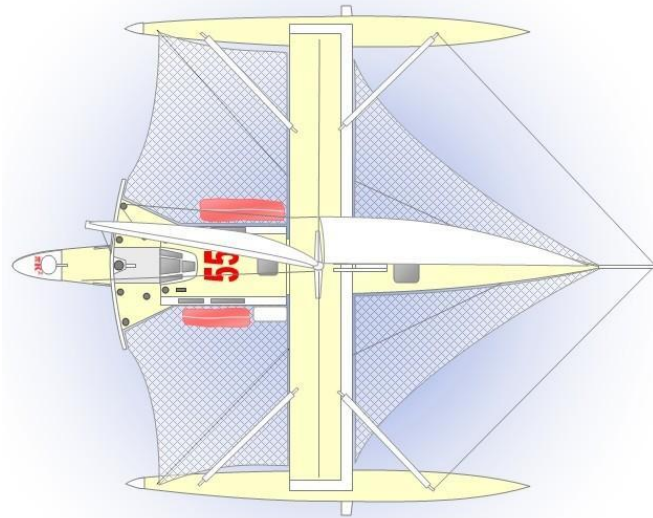
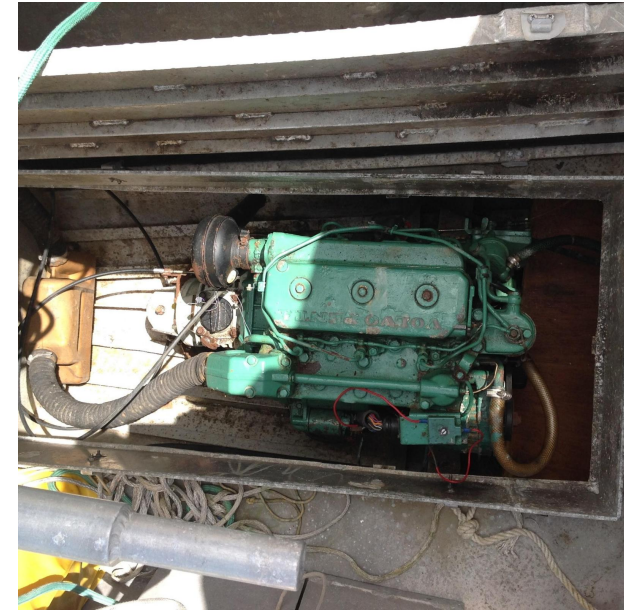












© F. Monsonnec 2011