



SALE PRE OWNED

stevens 1140 dutch steel motor cruiser

213 029 USD + VAT

Description

Stevens 1140 Dutch Steel Motor Cruiser. A stunning example of this prestigious Marque that presents extremely well throughout. From the first moment you step aboard you get this warm feeling of being surrounded by quality, attention to detail and above all light, brightness and space from her open plan interior layout. Reduced from PS169,950 April 2024

Specification

Exterior & Deck

Hardware Manual Anchor Winch w/30m Chain Full Aft Deck Canopy Helm Enclosure Full Width Aft Deck Bench Seat w/Storage New Cockpit Upholstery New Cockpit Lighting Transom Boarding Door w/Ladder to Bathing Platform Swim Ladder Bathing Platform/360L Holding Tank Collapsible Windscreens Mast on Fore Deck Port & Starboard Boarding Exits Selection of Ropes & Fenders Depth Sounder & Speed Log Pantograph Windscreen Wipers Exhaust Temperature Alarm Rudder Indicator Saloon & Domestic Equipment Eberspacher Warm Air Heating Shore Power Throughout Battery Charger Hot Water Calorifier 240v/Engine Fusion MS-AV755 Bluetooth Sound System with Speakers LCD TV's w/Aerial ENVIRO TXT Monitor System w/Mobile Alert Port & Starboard Side Opening/Sliding Windows Overhead Ventilation Hatch Central Opening Window Gas Struted Engine Room Floor Hatch Large Deep Cycle Battery Banks Galley, Dinette & Forward WCSmev Gas Oven & Grill 110L Fridge w/Freezer Compartment 3 Burner Gas Hob + Fire Blanket Round Stainless Steel Sink w/Single Leaver Tap New Galley Under Counter LED Lighting Overhead Escape/Ventilation Hatch Teak & Holly Flooring Dinette Converts to Double Berth Manual Flush WC/Washroom with Holding Tank Connection Open/Closable Air Vents Forward Cabin V-Berth w/Infill to Make Double Berth Storage Under Berths Reading Lights Wardrobe to Port

Specifications

YEAR

2004

WIDTH

3.69

LENGTH

11.43

CABINS

2

General

| | | |
|---------|--------------------------------|-------------------------|
| BRAND | MODEL | CURRENT LOCATION |
| stevens | 1140 dutch steel motor cruiser | Chertsey united kingdom |

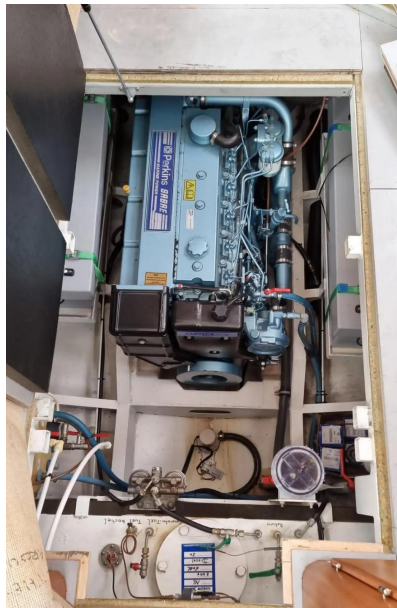
Building / facilities

| | |
|---------------|------------------|
| HULL MATERIAL | AMOUNT OF CABINS |
| STEEL | 2 |

Engine room

| |
|------------------------|
| NUMBER OF ENGINES (CV) |
| 0 |

Stevens 1140 Dutch Steel Motor Cruiser









Stevens 1140 Dutch Steel Motor Cruiser





