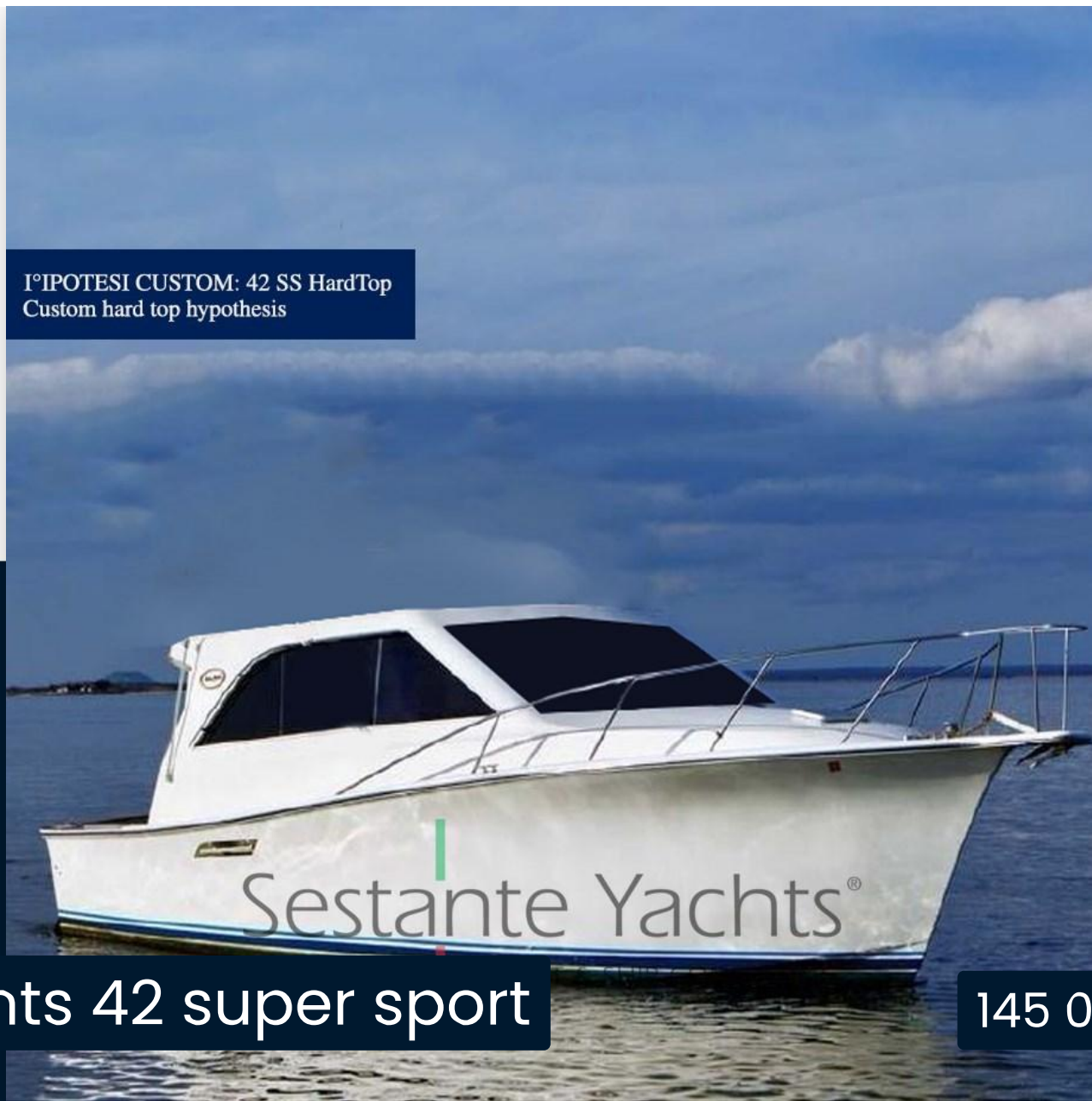


1°IPOTESI CUSTOM: 42 SS HardTop
Custom hard top hypothesis



SALE PRE OWNED

ocean yachts 42 super sport

145 000 € All Tax Included

Description

SPORT FISHERMAN CULT AMERICAN, CUSTOM HARD TOP VERSION, ORIGINAL DETROIT DIESEL 485 engines reported at 0 hours in 2021 with axle and ecie balance, VERSION 2 CABINS, full optional fishing and very well equipped for onboard entertainment. INTERIOR COMPLETELY REDONE, boat practically new ! Free singing delivery ready for the summer season.

-

SPORT FISHERMAN CULT AMERICAN VERSION CUSTOM HARD TOP, ORIGINAL DETROIT DIESEL 485 engines brought back to 0 hours in 2021 with axle and elcihe balancing, 2 CABINS VERSION, full fishing options and very well equipped for onboard entertainment. INTERIOR COMPLETELY REDONE, practically new boat! Delivery ex works ready for the summer season.

Disclaimer:

All information on this site relating yachts is for information purposes only. Yachts condition and / or provided information correctness are not guaranteed and there is no responsibility for any inaccuracy. All dimensions, capacity, speed, etc. are not technically verified. It is to be clear that all information relating to the state of the yachts are subject to the common degradation due to wear and tear. We therefore advise customers to carefully check and inspect yachts, specifications and information to verify their accuracy with the help of an independent qualified marine surveyor before the purchase that it's subject to satisfactory checks and sea trials. Published yachts are offered to be sold. We reserve the rieht to change specifications, prices etc. without notice. We are not

Specifications

YEAR

1989

WIDTH

4.67

FUEL TANK CAPACITY

1627

CABINS

2

ENGINE MANUFACTURER

Detroit Diesel 6/71 T

LENGTH

12.82

DRAFT

1.19

GUESTS CRUISING

10

BATHROOMS

1

HORSE POWER

2 X 485 CV

General

TYPE	BRAND	MODEL	GUESTS CRUISING
Motorboat	ocean yachts	42 super sport	10
CURRENT LOCATION	Campania		

Dimensions / Performance

WEIGHT (T)	FUEL CAPACITY (L)	CRUISING SPEED (ND)	TOP SPEED (ND)
9999.99	1627	25	30

Building / facilities

AMOUNT OF CABINS	BERTHS	BATHROOM(S)
2	4	1

Engine room

ENGINE	NUMBER OF ENGINES HORSE POWER (CV)	PROPULSION	FUEL
Detroit Diesel 6/71 T	2 x 485	4 Pale bronzo (Equibratura 2021)	Diesel
BOW THRUSTER			

Electricity / air conditioning

ENGINE BATTERY

BATTERY
CHARGER

GENERATOR

AIR CONDITIONING

HEATING SYSTEM

Navigation equipment

GPS

TRACER

RADAR

AUTO PILOT

VHF

NAVIGATION COMPASS

SONAR

SPEEDOMETER

ANCHOR

Galley / Laundry / Entertainment

MICROWAVE

FRIDGE

TV

Deck equipment

DECK SHOWER

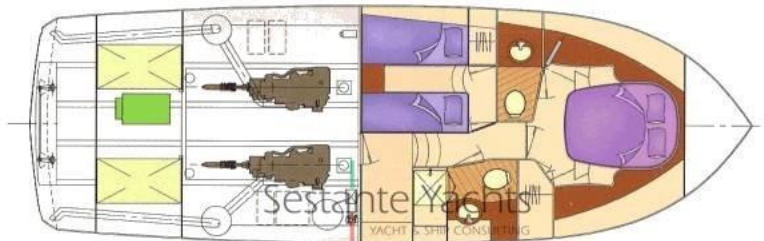
Safety equipment / miscellaneous

LIFE
RAFT

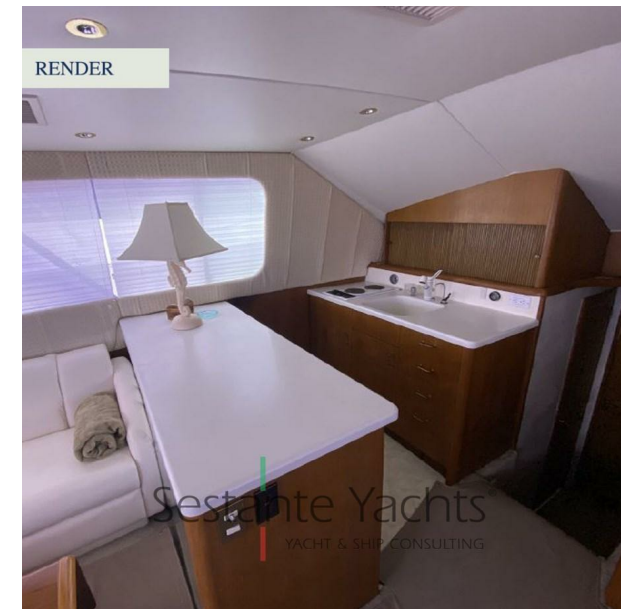
BILGE PUMP

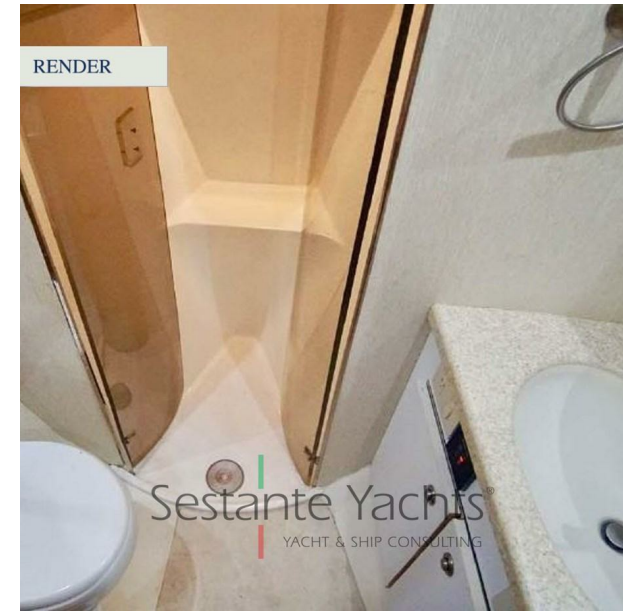


Upper Deck



Lower Deck





USED/RESTORED/READY TO GO/USED/RESTORED
OCEAN YACHT 42 SS
With Detroit Engines:
€ 145,000.00 - VAT paid (Price Negotiable)
With Up-Grade Motors * (See engines):
€ 245,000.00 - VAT paid (Price Negotiable)



PROPULSION

Engines : Detroit Diesel (6-71) T1
PH: 2x485
Upgrade engines: Volvo Penta C8 (2021)
PH: 2x510hp
Transmission: Axiis Line
Engines command: Mechanical
Engines up grade command: **electronic**
Hours: 0
Speed: Cruise: 30 Kn
Vel. Maximum: 25 Kn
Notes: Possibility of sale without motors or with motors proposed by the buyer. * Price to be worked out by mutual agreement

TECHNICAL DATA

- + Year / Year building: 1982
- + Immatricolazione / I* Registration: 1982
- + Date of last restoration / Last refit: 2021
- + RINA: New Issue: 2026
- + Category / Construction category: A
- + Length / Length: 12.81
- + Width / Width: 4.27
- + Immersion / Draft: 1.10

THE PROJECT/HULL

External
painting Gelcoat (color by choice) Polishing over final total. Wrapping color of your choice) waterline. Zero hull over anti-vegetative
Realization of a new internal control station on the front right side;
Steel brushing and plating external
Silicon Refurbishment of aft entrance door. (Glass + Uprights + Deck); Revision Driving position of the aft; reinforcement Dolphin.
New exterior lights (hatch over navigation lights, submersible lights)
New exterior upholstery (choice of colors) totally new in every area
Remaking teak cockpit New Aft.

Sestante Yachts®
YACHT & SHIP CONSULTING

HULL WORK SPECIFICATIONS

Interior
floor refurbishment Saloon; carpet New interior (Choice of colors) in every room;
Restoration of interior wood in each room and of all the whole furniture with original color; **Refurbishment of the new bathroom** (Essences chosen by the customer).
curtains New interior (Choice of colors).
Refurbishment of the two internal cabins (leather ceilings, mattresses).
New kitchen with Corian top (Furniture + Appliances); **New relaxation area** (sofa and new aperitif table).

OPTIONAL NAVIGATION

- Aft control station
- Radar + Antenna
- Fishfinder
- Plotter: GPS (2021)
- Depth sounder: (2021)
- Autopilot: (2021)
- Compass
- Flaps control
- Flaps Rudder
- Indicator
- Winch control
- Navigation lights
- Submerged lights
- Bow thruster with 2 Pos (control)

OPTIONAL

- Internal barometer
- Air conditioning: 12.000 BTU (New 2021)
- External refrigerator (New 2021)
- Internal refrigerator (New 2021)
- 4-burner glass ceramic plate (New 2021)
- Ice Maker (New 2021)
- Dishwasher (New 2021)
- Extractor kitchen fumes
- Microwave (Nuovo2021)
- Generator: Mase 6 Kw (Nuovo2021)
- Stainless bronze 15kg chain 50 mt iron (First 2 m T steel)
- Boilers (Nuovo2021)
- Autoclave (Nuovo2021)
- Inverter (Nuovo2021)
- Rectifier
- Scrubbers (Nuovo2021)
- outdoor Shower (New2021)
- Internal shower (New2021)
- Black water tank (New2021)marine
- Electric Toilet (New2021)
- Shore water socket + Deck washing socket 220V Shore socket + Cable
- Side window blinds (White PVC)
- Internal fabric curtains (colors of your choice)
- Fabric sofa interior
- Sky cushions: Cockpit (Choice of colors)

Sestante Yachts®
YACHT & SHIP CONSULTING

Sky cushions: Bow (Choice of colors)
Transparent PVC sheet for T-Top closure
Fiberglass stern plank
entrance door
External BBQ (New2021)

ENTERTAINMENT (All New 2021)

TV system + N° TV in living room *42pollici*
Terrestrial Digital
Satellite 2 Way + Decoder
Radio + Stereo: Wi-Fi + USB
Speaker: Pz 2 Salon Pz 2 Well Pz 2 Fly
Porta reeds
Bath alive and Fished tank

SAFETY (All new 2021)

Life raft Liferaft
with rope
Fires 12 Miles + Smoke buoy
N°8 Life jackets
First aid

EXTERIOR ARRANGEMENT

External cockpit with external furniture (sink and BBQ) with access ladder to the Fly area
Deck chairs cockpit.
Control area aft (Rudder + Handcuffs)
Bow sundeck.

INTERIOR ARRANGEMENT

Living room with L-shaped sofa as opposed to TV cabinet with table.
Environment Separate kitchen with peninsula
Dining table
Access ladder below deck with:
Cabin for single bunk beds
Bow cabin,
Bathroom with shower, toilet, sink,
washing machine inside.



Sestante Yachts
YACHT & SHIP CONSULTING

CAPITOLATO LAVORI SCAFO

Interni

Rifacimento pavimento salone: Moquette interna nuova (Colori a scelta) in ogni ambiente: Restauro legni interni in ogni ambiente e di tutti i mobili interni con colore originale: Rifacimento al nuovo del bagno (EsENZE a scelta del cliente).

Tende interne nuove (Colori a scelta).
Rifacimento a nuovo delle due le cabine interne (Soffitti in pelle, materassi).

Nuova cucina con piano in corian (Mobili + Elettrodomestici): Nuova zona relax (Divano e Tavolo aperitivo nuovo).

OPTIONAL NAVIGAZIONE

Stazione comandi di poppa
Radar + Antenna
Fishfinder: Pz: 1
Plotter: GPS (2021) Pz: 1
Ecoscandaglio: (2021) Pz: 1
Autopilota: (2021) Pz: 1
Bussola: Pz: 1
Comando flap: Pz: 2
Indicatore flap: Pz: 2
Angolo di barra: Pz: 1
Comando verricello: Pz: 2
Luci di via: Pz: 2
Luci sommerse: Pz: 2
Elica di prua con Pz: 2 (comandi)

OPTIONAL

Barometro interno
Aria condizionata: 12 000 BTU (Nuovo2021)
Frigo esterno (Nuovo2021)
Frigo interno (Nuovo2021)
Pianta vetroceramica 4 fuochi (Nuovo2021)
Ice Maker (Nuovo2021)
Lavastoviglie (Nuovo2021)
Estrattore fumi cucina
Microonde (Nuovo2021)
Generatore: Mase 6 Kw (Nuovo2021)
Ancora inox Bruce 15Kg
Catena 50 mt ghisa (Primi 2 MT Acciaio)
Boiler (Nuovo2021)
Autoclave (Nuovo2021)
Inverter (Nuovo2021)
Raddrizzatore
Lavasciuga (Nuovo2021)
Doccia esterna (Nuovo2021)
Doccia interna (Nuovo2021)
Cassa acque nere (Nuovo2021)
Wc Marino elettrico (Nuovo2021)
Presa acqua banchina + Presa lavaggio ponte
Presa banchina 220V + Cavo
Oscuranti finestre laterali (PVC Bianco)
Tende interne in stoffa (colori a scelta)
Divano in stoffa interno
Cuscineria in sky: Pozzetto (Colori a scelta)
Cucineria in sky: Pnq (Colori a scelta)

Sestante Yachts
YACHT & SHIP CONSULTING

USATO/RESTAURATO PRONTO BOA/USED RESTORED OCEAN YACHT 42 SS

Con Motori Detroit:
€ 145.000,00 - Iva pagata/Prezzo Trattabile)
Con Up-Grade Motori*(Vedi motori):
€ 245.000,00 - Iva pagata/Prezzo Trattabile)



PROPULSIONE

Motori: Detroit Diesel (6-71) TI
PH: 2x485
Up grade motori: Volvo Penta C8 (2021)
PH: 2x510hp
Trasmissione: Linea Asse
Comando motori: Meccanici
Comando motori up grade: elettronici
Ore: 0
Vel. Crociera: 30 Kn
Vel. Massima: 25 Kn
Note: Possibilità di vendita senza motori o con motori proposti dal compratore. *Prezzo da elaborare di comune accordo.

Sestante Yachts
YACHT & SHIP CONSULTING

DATI TECNICI

- Anno / Year building: 1982
- Immatricolazione / P Registration: 1982
- Data ultimo restauro / Last refit: 2021
- RINA: Nuova emissione: 2026
- Categoria / Construction category: A
- Lunghezza / Length: 12.81
- Larghezza / Width: 4.27
- Immersione / Draft: 1.10

CAPITOLATO LAVORI SCAFO

Esterni

Verniciatura gelcoat (colore a scelta)
Lucidatura oltre totale finale, Wrapping (colore a scelta) linea di galleggiamento.
Carena a zero oltre anti-vegetativa
Realizzazione nuova Postazione comando interna lato Destro Anteriore:
Spazzolatura acciai e Silliconature esterne
Rifacimento porta di ingresso di poppa. (Vetro + Montanti + Porta): Revisione postazione guida a poppa; Rinforzo costringera.

Nuove luci esterne (passo uomo oltre luci di navigazione, luci sommerse)

Nuova tappezzeria esterna (Colori a scelta) totalmente nuova in ogni zona

Rifacimento teak pozzetto Nuova plancia di poppa.

Telo PVC trasparente per chiusura T-Top
Plancia di poppa in vetroresina
Porta di ingresso
BBQ Esterno (Nuovo2021)

INTRATTENIMENTO (Tutto Nuovo 2021)

Impianto Tv + N°TV in salone *42pollici*
Digitale terrestre
Satellite 2 Vie + Decoder
Radio + Stereo: Wi-Fi + Usb
Casse: Pz 2 Salone Pz 2 Pozzetto Pz 2 Fly
Porta canne
Vasca vivo e Vasca pescato

SICUREZZA (Tutto nuovo 2021)

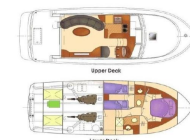
Zattera di salvataggio
Salvagente anulare con cima
Fuochi 12 Miglia + Boetta fumogena
N°8 Giubbotti salvataggio
Cassetta pronto soccorso

DISPOSIZIONE ESTERNI

Pozzetto esterno con mobile esterno (Lavello e BBQ) con scala di accesso alla zona Fly
Sedile sdraio pozzetto.
Zona comandi a poppa (Timone+Manette)
Prendisole di prua.

DISPOSIZIONE INTERNI

Salone con divano a L contrapposto a mobile TV con tavolo.
Ambiente Cucina separato con penisola
Tavolo da pranzo
Scala di accesso sottopopoca con:
Cabina letti singoli a castello
Cabina di prua armatoriale
Bagno con Doccia, WC, Lavello
Mobile Lavatrice interno.



Sestante Yachts
YACHT & SHIP CONSULTING

CONSEGNA
FRANCO CANTIERE
PRONTO BOA
delivery in sea
ready for summer

 Sestante Yachts®
YACHT & SHIP CONSULTING