



SALE PRE OWNED

need yacht 32

178 000 € All Tax Included

Description

Boat under 10 meters, first launched in 2016. Sold by us to the current owner in 2021. 2xVolvo Penta V8 270 DP-S petrol. Open with practical sunshade T-top on the driver's seat. European VAT paid, leasing closing invoice available.

Very few engine hours, around 250, used only in fresh water on Lake Garda until 2021. First refit carried out in Como by Yacht Service Como in 2021 with central sundeck modification and electric cockpit table. Maintenance always performed regularly.

2022: new light-coloured external cushions, black shading net, new teak.

For sale due to upgrade to a larger vessel.

Visit our website: www.valbroker.com - For transport we cooperate with Paolo Meroni of Yacht Service srl in Como.

We speak English, French and German and Spanish.

The data is believed to be correct but not guaranteed. Sales commissions not included.

Navigation equipment:

Electronic engine control, Depth Sounder (Garmin), GPS (digitale), Plotter with GPS antenna (Garmin), VHF Radio (Raymarine).

Staging and technical:

Water pressure pump, 3 Batteries, Teak Side Decks, Electric Flaps, Flaps

Electric engine control, Depth Sounder (Garmin), GPS (digitale), Plotter with GPS antenna (Garmin), VHF Radio (Raymarine).

Specifications

YEAR

2015

WIDTH

2.97

FUEL TANK CAPACITY

700

CABINS

1

ENGINE MANUFACTURER

Volvo Penta V8 270
DP-S

HORSE POWER

2 X 270 CV

LENGTH

9.99

DRAFT

0.56

GUESTS CRUISING

10

BATHROOMS

1

ENGINE HOURS

250

General

TYPE	BRAND	MODEL	GUESTS CRUISING
Motorboat	need yacht	32	10
CURRENT LOCATION	Sardegna		

Dimensions / Performance

WEIGHT (T)	FUEL CAPACITY (L)	CRUISING SPEED (ND)	TOP SPEED (ND)
6.22	700	27	37

Building / facilities

HULL MATERIAL	HULL COLOR	SUPER STRUCTURE MATERIAL	AMOUNT OF CABINS
Vetroresina	Blue metallized	Vetroresina	1
BERTHS	BATHROOM(S)		
4	1		

Engine room

ENGINE	NUMBER OF ENGINES HORSE POWER (CV)	ENGINE HOURS	PROPULSION
Volvo Penta V8 270 DP-S	2 x 270	250	Duo prop
BOW THRUSTER			

Electricity / air conditioning

ENGINE BATTERY

BATTERY
CHARGER

Navigation equipment

GPS

VHF

NAVIGATION COMPASS

SONAR

SPEEDOMETER

Galley / Laundry / Entertainment

FREEZER

FRIDGE

TV

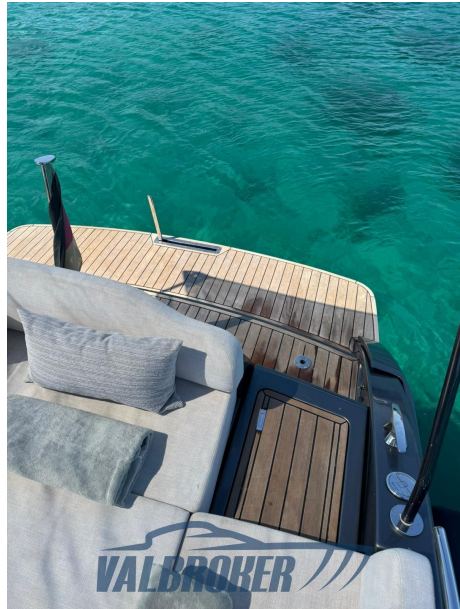
DVD PLAYER

Deck equipment

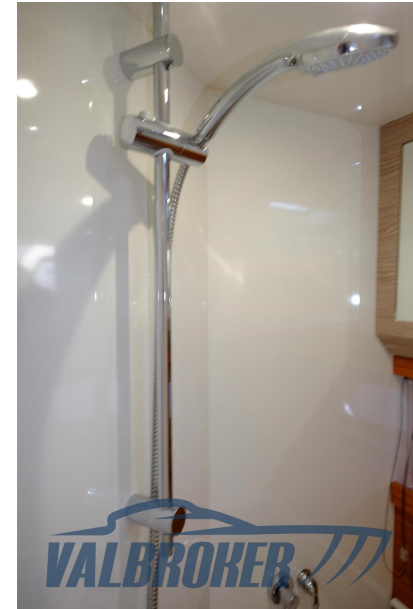
DECK SHOWER

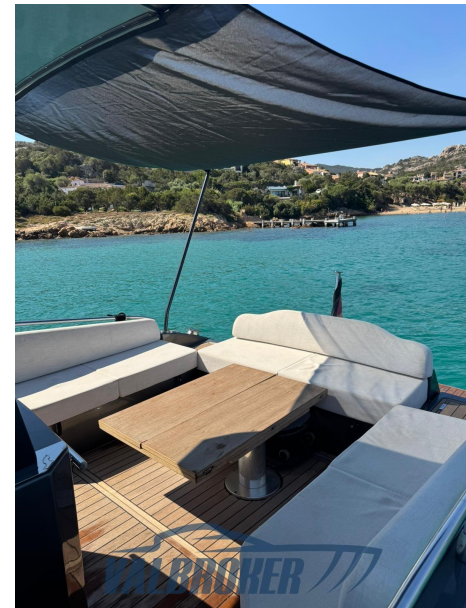
BIMINI

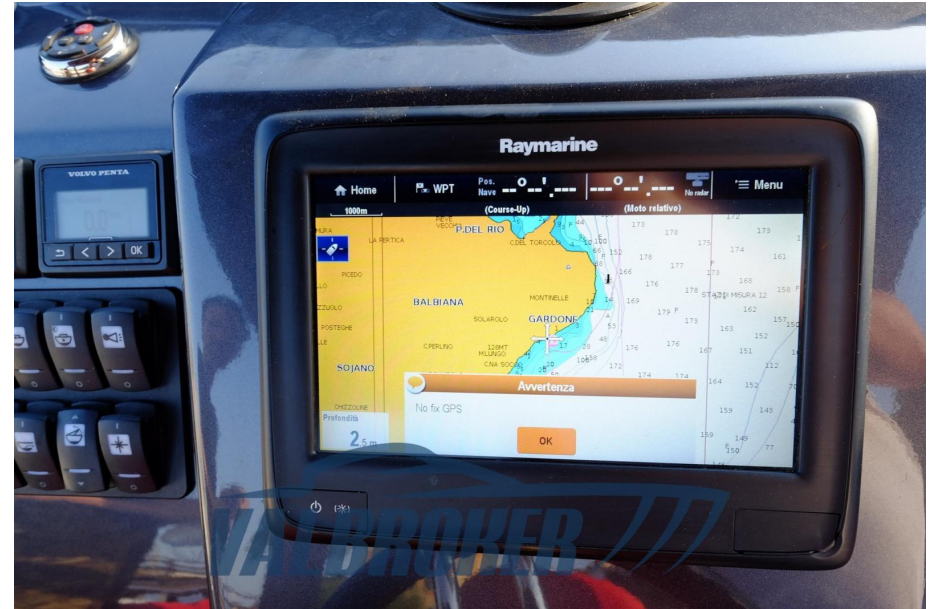


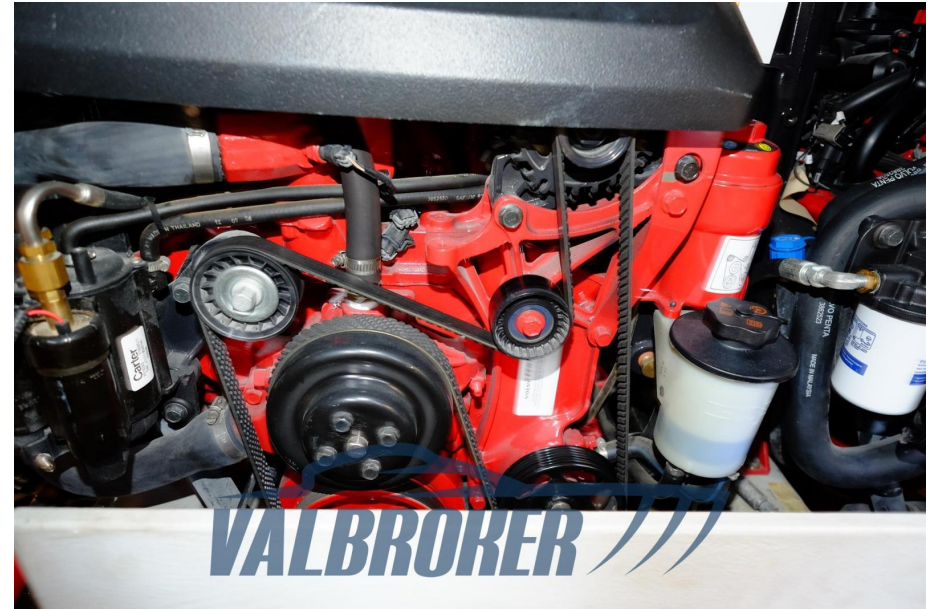
















CE

CANTIERE : _____



NEED YACHT

MILANO S.r.l.

MODELLO : **NEED 32**

DESIGN CATEGORY

B

 = **1300** Kg MAX  **10**

402 kW MAX

 +   = **850** Kg

VALBROKER