



SALE PRE OWNED

mp yachts 670s

1 600 000 € + VAT

## Description

---

The new MP70S from Marcelo Penna is a new sailing yacht with great potential both in races and in comfortable relaxing cruises !

This first unit is under construction at a Spanish shipyard famous for successful racing yachts TP52 - series.

Made of carbon, glass and Kevlar fiber, ..

The boat is CE and RINA certified.

It can be delivered in 8 months !

## Specifications

---

YEAR

**2021**

---

WIDTH

**5.00**

LENGTH

**20.00**

## General

---

|          |           |       |                  |
|----------|-----------|-------|------------------|
| TYPE     | BRAND     | MODEL | CURRENT LOCATION |
| Sailboat | mp yachts | 670s  | Espagne          |

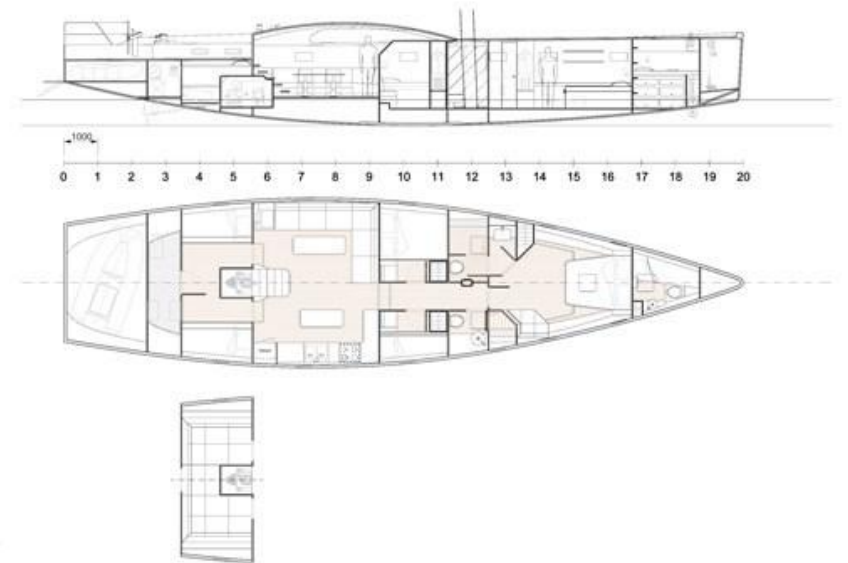
## Engine room

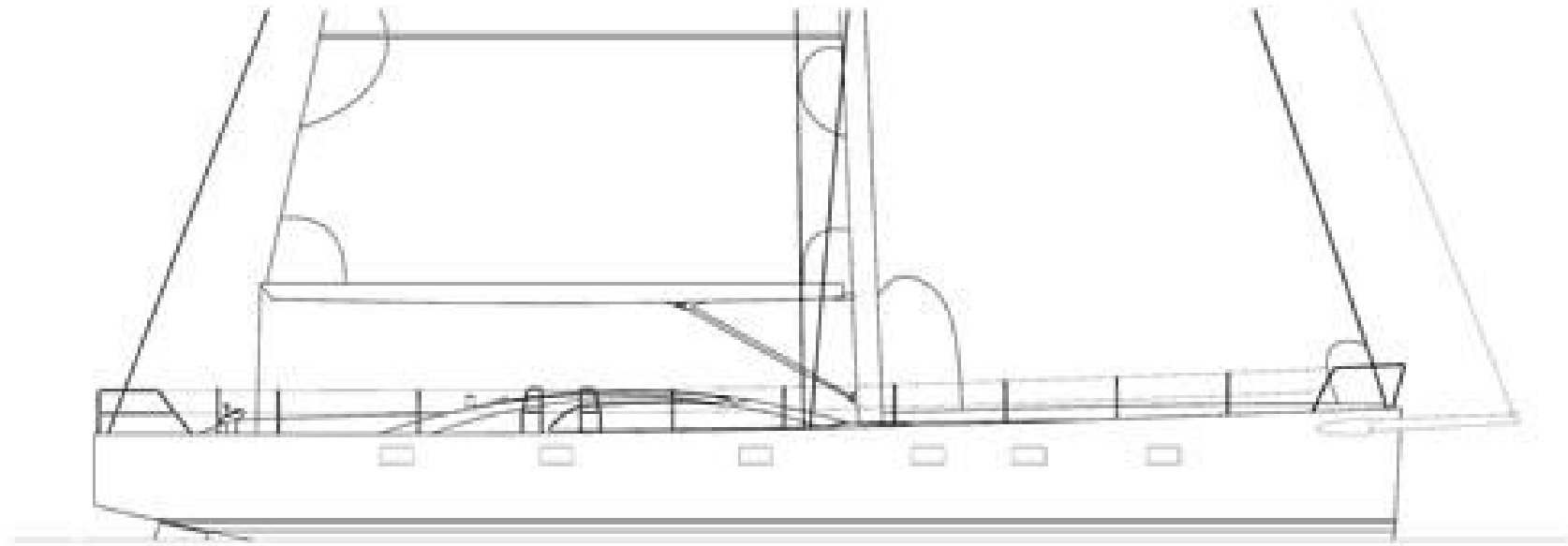
---

NUMBER OF ENGINES (CV)  
0

|  |       |                   |
|--|-------|-------------------|
| LOA - LENGHT OVERALL                   | 20    | [m]               |
| LWL - LENGHT WATERLINE                 | 18    | [m]               |
| BOA - BEAM OVERALL                     | 5     | [m]               |
| SAIL AREA - SQUARE HEAD MAINSAIL + JIB | 253   | [m <sup>2</sup> ] |
| SAIL AREA - PINHEAD MAINSAIL + JIB     | 227   | [m <sup>2</sup> ] |
| DRAFT - SHALLOW KEEL                   | 2,85  | [m]               |
| DRAFT - DEEP KEEL                      | 3,90  | [m]               |
| LIGHT DISPLACEMENT                     | 24500 | [Kg]              |
| ENGINE POWER                           | 200   | [HP]              |
| GENERATOR                              | 11    | [kw]              |
| FUEL CAPACITY                          | 500   | [l]               |
| FRESH WATER CAPACITY                   | 600   | [l]               |
| POSSIBILITY OF HYBRID PROPULSION       |       |                   |







1000

0 1 2 3 4 5 6 7 8 9 10 11 12 13 14 15 16 17 18 19 20

