



SALE PRE OWNED

**absolute 58 fly**

**1 200 000 € All Tax Included**

## Description

Absolute 58 fly, visible in Croatia, launched in May 2019. High quality Made in Italy. Three double cabins with facilities and crew cabin with private entrance and private bathroom.

2xVolvo Penta D8 IPS 800, high performance and low consumption!! The interior materials are always of the highest quality, with a beautiful contrast of light and dark woods, the finishes are also excellent, always very accurate in true ABSOLUTE style.

Visit our website: [www.valbroker.com](http://www.valbroker.com) - We can transport it wherever you want.

We speak English, German, French and Spanish.

The data is considered correct but not guaranteed. Selling fees not included.

IN COLLABORATION WITH ADRIATIC WAVE

Navigation equipment:

Chain counter, 3 GPS (Garmin), Joystick (di manovra), Co-pilot seat.

Staging and technical:

Water pressure pump, Teak Side Decks, Deck Shower, Hard top (apribile), Washbasin in the cockpit, Underwater lights, Gangway (idraulica a scomparsa, teak, Opacmare), Platform (idraulica, teak), Entry door, Side door, Teak Cockpit, Electric Windlass, cockpit table (teak).

Domestic Facilities onboard:

## Specifications

YEAR

2019

WIDTH

4.80

FUEL TANK CAPACITY

2000

CABINS

3

ENGINE MANUFACTURER

Volvo Penta D8 IPS800

HORSE POWER

2 X 600 CV

LENGTH

17.24

DRAFT

1.35

GUESTS CRUISING

14

BATHROOMS

1

ENGINE HOURS

520

## General

TYPE	BRAND	MODEL	GUESTS CRUISING
Motorboat	absolute	58 fly	14
CURRENT LOCATION			
Mare adriatico			

## Dimensions / Performance

FUEL CAPACITY (L)	CRUISING SPEED (ND)	TOP SPEED (ND)
2000	24	30

## Building / facilities

HULL MATERIAL	SUPER STRUCTURE MATERIAL	DECK MATERIAL	AMOUNT OF CABINS
Vetroresina	Vetroresina	Vetroresina	3
BERTHS	BATHROOM(S)		
6	1		

## Engine room

ENGINE	NUMBER OF ENGINES HORSE POWER (CV)	ENGINE HOURS	PROPULSION
Volvo Penta D8 IPS800	2 x 600	520	duo prop traente
FUEL	BOW THRUSTER		
Diesel			

### Electricity / air conditioning

---

ENGINE BATTERY

BATTERY  
CHARGER

GENERATOR

AIR CONDITIONING

### Navigation equipment

---

GPS

RADAR

AUTO PILOT

VHF

ANCHOR

FLYBRIDGE

### Galley / Laundry / Entertainment

---

OVEN

FREEZER

FRIDGE

TV

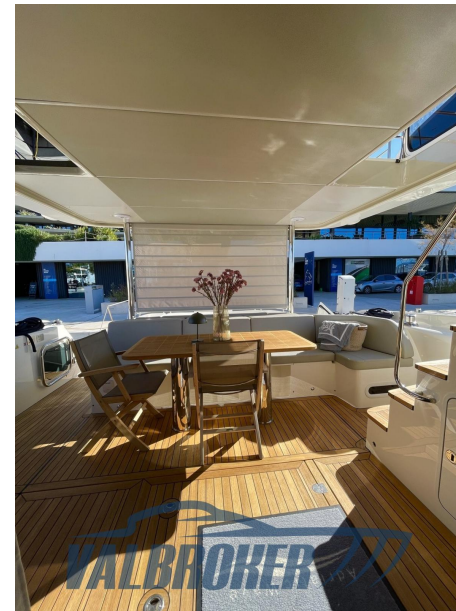
### Deck equipment

---

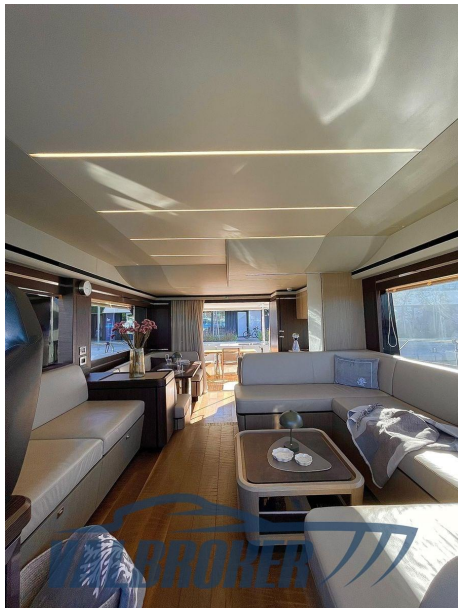
DECK SHOWER

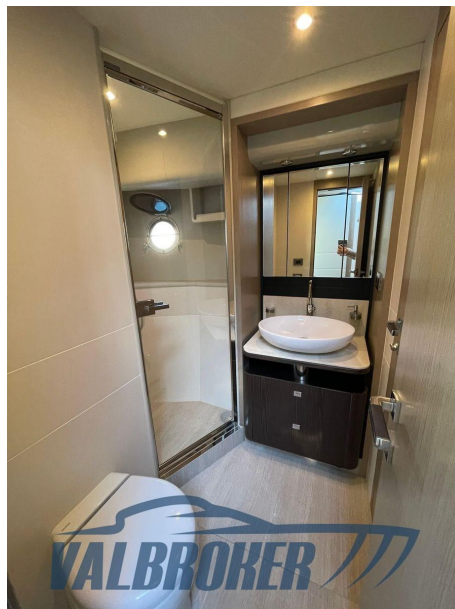


















**VALBROKER** 



**VALBROKER** 



**VALBROKER** 



**VALBROKER** 







