



SALE PRE OWNED

azimut 62

510 000 € All Tax Included

## Description

Cleaning of exchangers carried out in 2022

Fuel tank cleaning and opening for inspection in 2022

walkway on the right

Crew entrance from the stern bridge

Navigation equipment:

Rudder angle indicator, Electronic engine control, Chain counter, Autopilot (Raymarine), Plotter with GPS antenna (2022 Raymarine sul fly e in plancia).

Staging and technical:

Engine Alarm, Bilge Alarm, Water pressure pump, Deck Shower (in pozzetto), Twin Steering, Hydraulic Flaps, Davits for tender on fly, Flaps Indicators, Anchor Chain Washdown, Courtesy Lights, Underwater lights, Gangway (elettroidraulica a destra), Platform, Automatic Bilge Pump, Entry door, Teak Cockpit, Shorepower connector, Water harbor connector system, Rollbar, Electric Windlass, swimming ladder, cockpit table, Horn, 2 Stern Winches, Bow Winches.

Domestic Facilities onboard:

Warm Water System, Inverter Air Conditioning, Light Dimmer (nel pozzetto), Waste Water Plant, Interior wooden floor (nel salone), 12V Outlets, 220V Outlets, Black Water Tank, 3 Video camera (in pozzetto, in sala motori, in salone), Electric Toilet.

## Specifications

YEAR

**2004**

WIDTH

**5.05**

FUEL TANK CAPACITY

**3400**

CABINS

**3**

ENGINE MANUFACTURER

**Caterpillar C18**

HORSE POWER

**2 X 1000 CV**

LENGTH

**19.22**

DRAFT

**1.38**

GUESTS CRUISING

**12**

BATHROOMS

**1**

ENGINE HOURS

**1280**

## General

---

TYPE	BRAND	MODEL	GUESTS CRUISING
Motorboat	azimut	62	12
CURRENT LOCATION			
Calabria, italia			

## Dimensions / Performance

---

WEIGHT (T)	FUEL CAPACITY (L)	CRUISING SPEED (ND)	TOP SPEED (ND)
30.30	3400	26	33

## Building / facilities

---

AMOUNT OF CABINS	BERTHS	BATHROOM(S)
3	6	1

## Engine room

---

ENGINE	NUMBER OF ENGINES HORSE POWER (CV)	ENGINE HOURS	FUEL
Caterpillar C18	2 x 1000	1280	Diesel
STERN THRUSTER	BOW THRUSTER		

## Electricity / air conditioning

---

ENGINE BATTERY	BATTERY CHARGER	GENERATOR
----------------	-----------------	-----------

### **Navigation equipment**

---

AUTO PILOT	VHF	NAVIGATION COMPASS	SONAR
SPEEDOMETER	ANCHOR		

### **Galley / Laundry / Entertainment**

---

MICROWAVE	FREEZER	FRIDGE	TV
-----------	---------	--------	----

### **Deck equipment**

---

DECK SHOWER	BIMINI
-------------	--------

### **Safety equipment / miscellaneous**

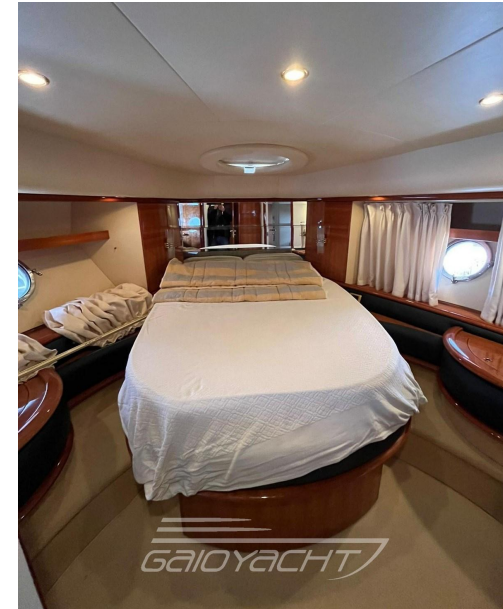
---

BILGE PUMP
------------

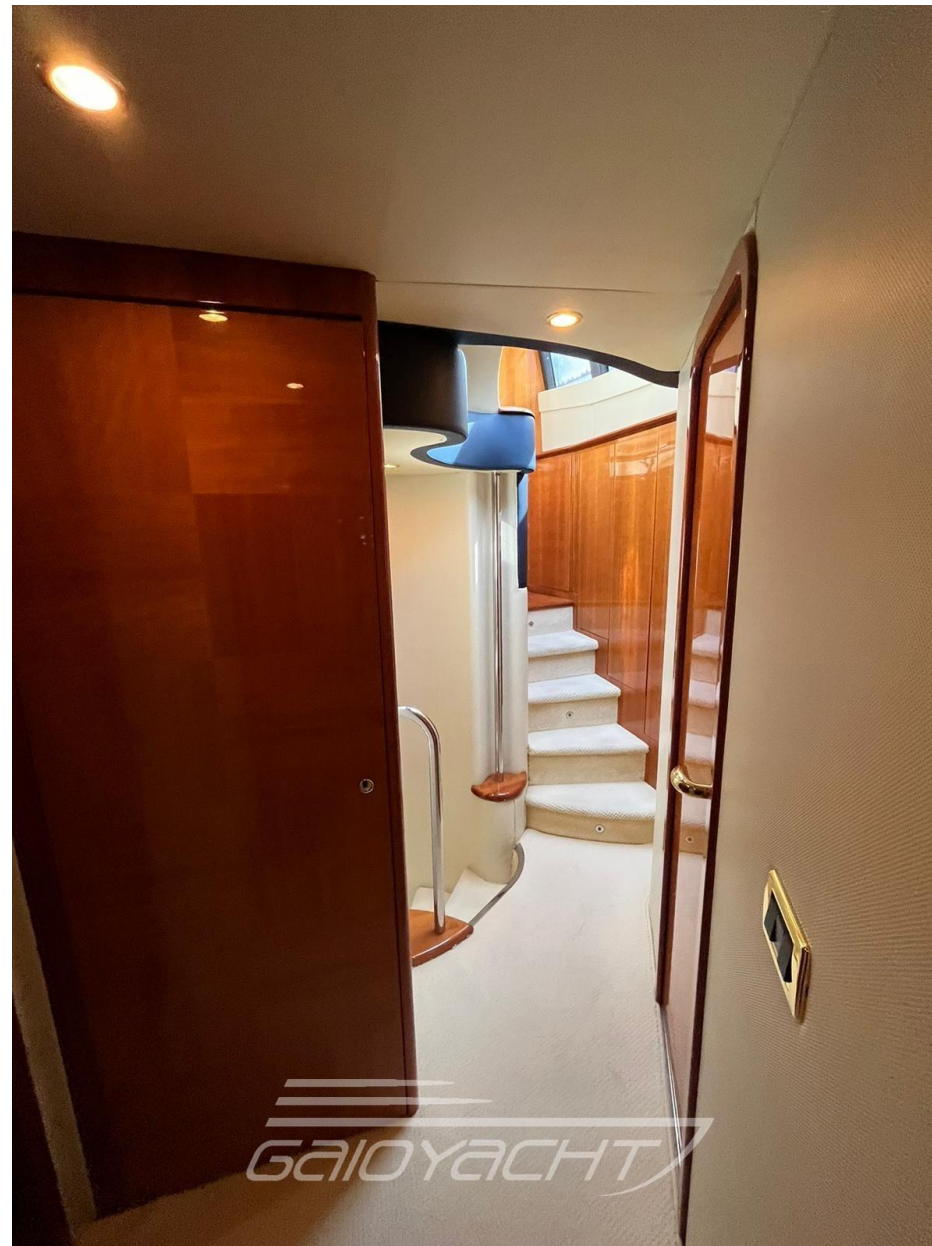












*GAIOYACHT*