



RYB
REVOLUTION YACHTS BROKERS

SALE PRE OWNED

raffaelli Shamal

Description

2-CABIN VERSION. REDUCED PRICE

BOAT IN VERY GOOD CONDITION

NEW 2024 GARMIN INSTRUMENTATION

Navigation equipment:

Rudder angle indicator.

Staging and technical:

Water pressure pump, Deck Shower, Hydraulic Flaps, Gangway, Automatic Bilge Pump, Manual Bilge Pump, Entry door, Shorepower connector, Rollbar, Electric Windlass, swimming ladder, Horn.

Domestic Facilities onboard:

Interior wooden floor, 12V Outlets, 220V Outlets, Electric Toilet.

Entertainment:

Speakers, Radio AM/FM, Hi-Fi.

Upholstery:

Cushions, Sunshade.

Specifications

YEAR

2005

WIDTH

3.64

FUEL TANK CAPACITY

850

CABINS

2

ENGINE MANUFACTURER

Caterpillar 3126 DITA

LENGTH

12.26

DRAFT

1.05

GUESTS CRUISING

12

BATHROOMS

1

HORSE POWER

2 X 350 CV

General

TYPE	BRAND	MODEL	GUESTS CRUISING
Motorboat	raffaelli	Shamal	12
CURRENT LOCATION	Mare adriatico		

Dimensions / Performance

WEIGHT (T)	FUEL CAPACITY (L)	CRUISING SPEED (ND)
11.40	850	26

Building / facilities

HULL MATERIAL	AMOUNT OF CABINS	BERTHS	BATHROOM(S)
Vetroresina	2	4	1

Engine room

ENGINE	NUMBER OF ENGINES HORSE POWER (CV)	BOW THRUSTER
Caterpillar 3126 DITA	2 x 350	

Electricity / air conditioning

ENGINE BATTERY	BATTERY CHARGER	GENERATOR
----------------	-----------------	-----------

Navigation equipment

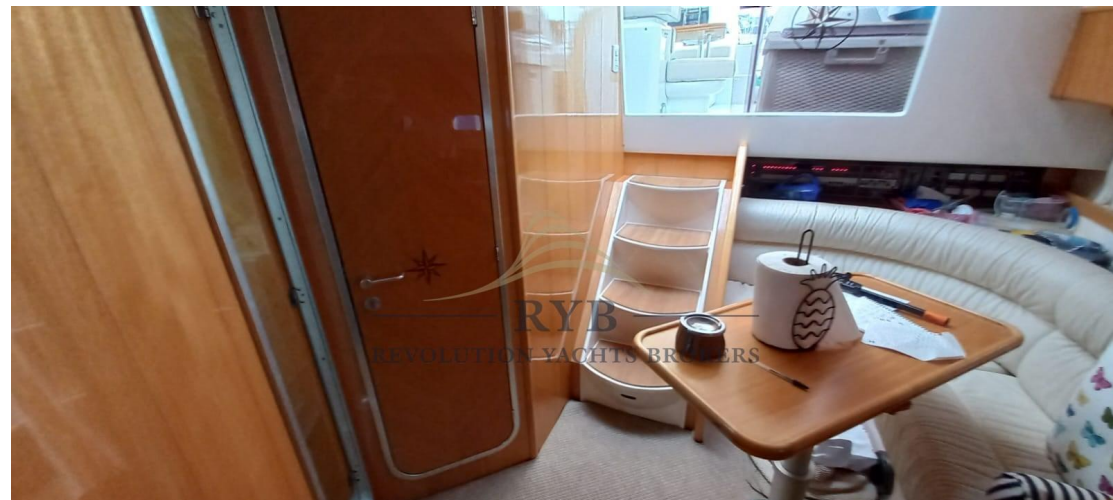
GPS	AUTO PILOT	NAVIGATION COMPASS	SONAR
SPEEDOMETER	ANCHOR		

Deck equipment

CANOPY

Safety equipment / miscellaneous

BILGE PUMP





RYB
— — — — —
REVOLUTION YACHTS BROKERS