



SALE PRE OWNED

# abati yachts 46 newport s

## Description

Excellent condition, few engine hours.

Recent instrumentation.

8 months in the shed.

Version 2 double cabins, 2 bathrooms, guest/crew cabin with bathroom. very well equipped.

Navy blue hull. Sundeck at the bow and stern.

Periodic maintenance.

Recent teak deck.

Large dinette with circular sofa with extendable table.

Kitchen in the hallway on the floor of the cabins equipped with refrigerator and freezer, oven and ceramic hob.

Double master cabin amidships with bathroom with shower.

Double guest cabin in the bow with bathroom. Guest bathroom.

Large teak cockpit with table and chairs.

Garage for the tender with mechanism for hauling and launching.

Navigation equipment:

Electronic engine control, Chain counter, Display, Depth Sounder (Raymarine recente), Autopilot (Raymarine), Plotter with GPS antenna (Raymarine recente),

## Specifications

YEAR

**2008**

WIDTH

**4.60**

FUEL TANK CAPACITY

**1600**

BATHROOMS

**1**

ENGINE HOURS

**400**

LENGTH

**13.90**

DRAFT

**1.20**

CABINS

**2**

ENGINE MANUFACTURER

**MAN R6-550**

HORSE POWER

**2 X 550 CV**

## General

TYPE	BRAND	MODEL	CURRENT LOCATION
Motorboat	abati yachts	46 newport s	Mar tirreno

## Dimensions / Performance

WEIGHT (T)	FUEL CAPACITY (L)	CRUISING SPEED (ND)	TOP SPEED (ND)
19.00	1600	26	31

## Building / facilities

HULL MATERIAL	SUPER STRUCTURE MATERIAL	DECK MATERIAL	AMOUNT OF CABINS
Vetroresina	Vetroresina	Vetroresina +teak	2
BERTHS	BATHROOM(S)		
4	1		

## Engine room

ENGINE	NUMBER OF ENGINES HORSE POWER (CV)	ENGINE HOURS	FUEL
MAN R6-550	2 x 550	400	Diesel
STERN THRUSTER	BOW THRUSTER		

## Electricity / air conditioning

ENGINE BATTERY	BATTERY CHARGER	GENERATOR	AIR CONDITIONING

### **Navigation equipment**

---

RADAR	AUTO PILOT	VHF	NAVIGATION COMPASS
SONAR	SPEEDOMETER	ANCHOR	

### **Galley / Laundry / Entertainment**

---

OVEN	FREEZER	FRIDGE	TV
------	---------	--------	----

### **Deck equipment**

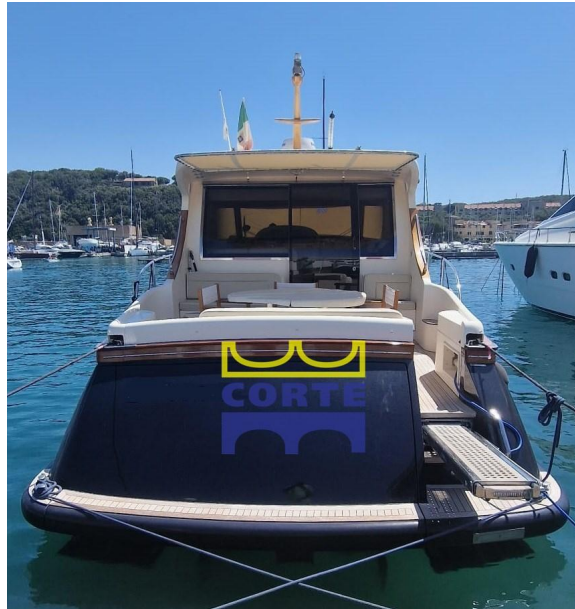
---

DECK SHOWER

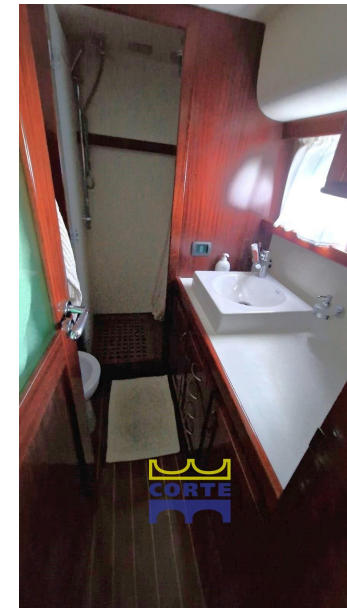
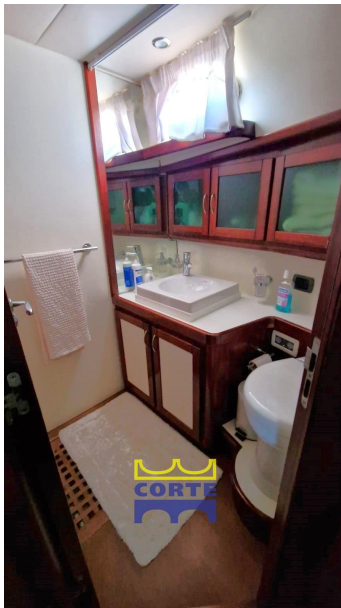
### **Safety equipment / miscellaneous**

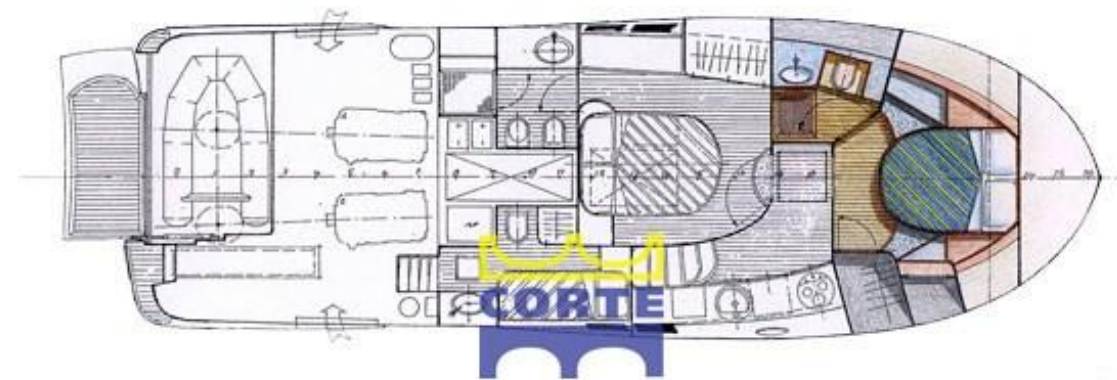
---

BILGE PUMP









Versione 2 camere + marinaio