



SALE PRE OWNED

need yacht 32

178 000 € All Tax Included

## Description

Boat under 10 meters, first launched in 2016. Sold by us to the current owner in 2021. 2xVolvo Penta V8 270 DP-S petrol. Open with practical sunshade T-top on the driver's seat. European VAT paid, leasing closing invoice available.

Very few engine hours, around 250, used only in fresh water on Lake Garda until 2021. First refit carried out in Como by Yacht Service Como in 2021 with central sundeck modification and electric cockpit table. Maintenance always performed regularly.

2022: new light-coloured external cushions, black shading net, new teak.

For sale due to upgrade to a larger vessel.

Visit our website: [www.valbroker.com](http://www.valbroker.com) - For transport we cooperate with Paolo Meroni of Yacht Service srl in Como.

We speak English, French and German and Spanish.

The data is believed to be correct but not guaranteed. Sales commissions not included.

Navigation equipment:

Electronic engine control, Depth Sounder (Garmin), GPS (digitale), Plotter with GPS antenna (Garmin), VHF Radio (Raymarine).

Staging and technical:

Water pressure pump, 3 Batteries, Teak Side Decks, Electric Flaps, Flaps  
Indicators, Courtesy Lights (external led), Underwater lights, Platforms (teak)

## Specifications

YEAR

**2015**

WIDTH

**2.97**

FUEL TANK CAPACITY

**700**

CABINS

**1**

ENGINE MANUFACTURER

**Volvo Penta V8 270  
DP-S**

HORSE POWER

**2 X 270 CV**

LENGTH

**9.99**

DRAFT

**0.56**

GUESTS CRUISING

**10**

BATHROOMS

**1**

ENGINE HOURS

**250**

## General

---

TYPE	BRAND	MODEL	GUESTS CRUISING
Motorboat	need yacht	32	10
CURRENT LOCATION	Sardegna		

## Dimensions / Performance

---

WEIGHT (T)	FUEL CAPACITY (L)	CRUISING SPEED (ND)	TOP SPEED (ND)
6.22	700	27	37

## Building / facilities

---

HULL MATERIAL	HULL COLOR	SUPER STRUCTURE MATERIAL	AMOUNT OF CABINS
Vetroresina	Blue metallized	Vetroresina	1
BERTHS	BATHROOM(S)		
4	1		

## Engine room

---

ENGINE	NUMBER OF ENGINES HORSE POWER (CV)	ENGINE HOURS	PROPULSION
Volvo Penta V8 270 DP-S	2 x 270	250	Duo prop
BOW THRUSTER			

## Electricity / air conditioning

---

ENGINE BATTERY	BATTERY CHARGER
	1

### Navigation equipment

---

GPS VHF NAVIGATION COMPASS SONAR  
SPEEDOMETER

### Galley / Laundry / Entertainment

---

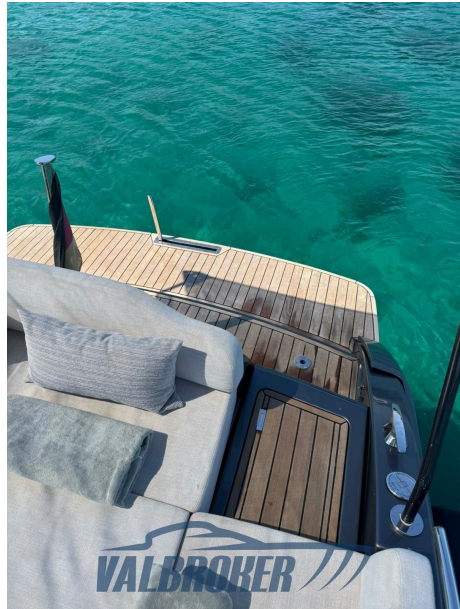
FREEZER FRIDGE TV DVD PLAYER

### Deck equipment

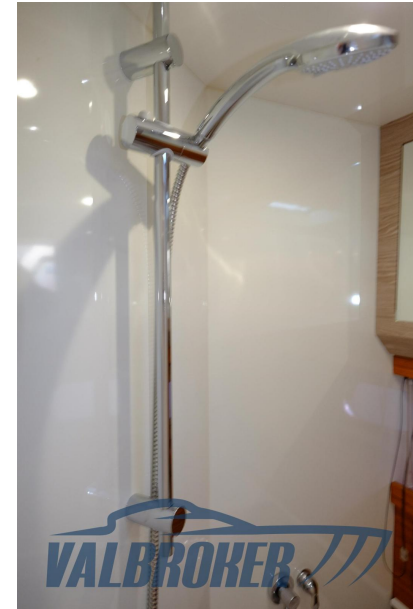
---

DECK SHOWER BIMINI

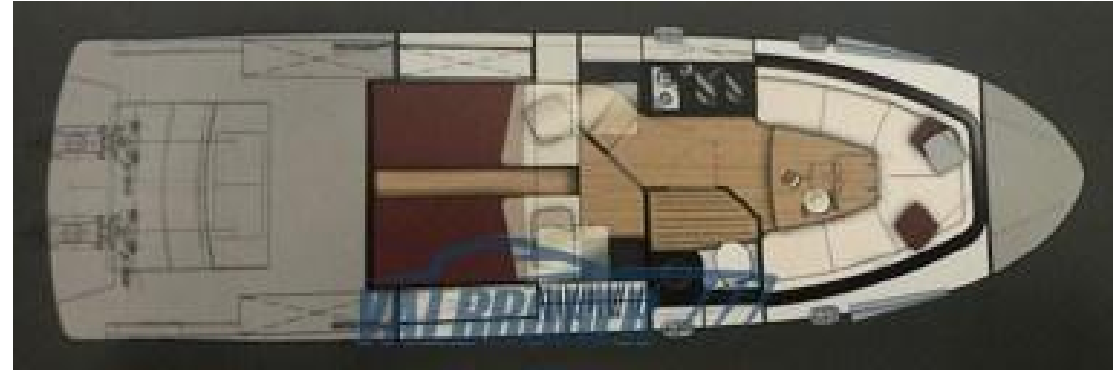


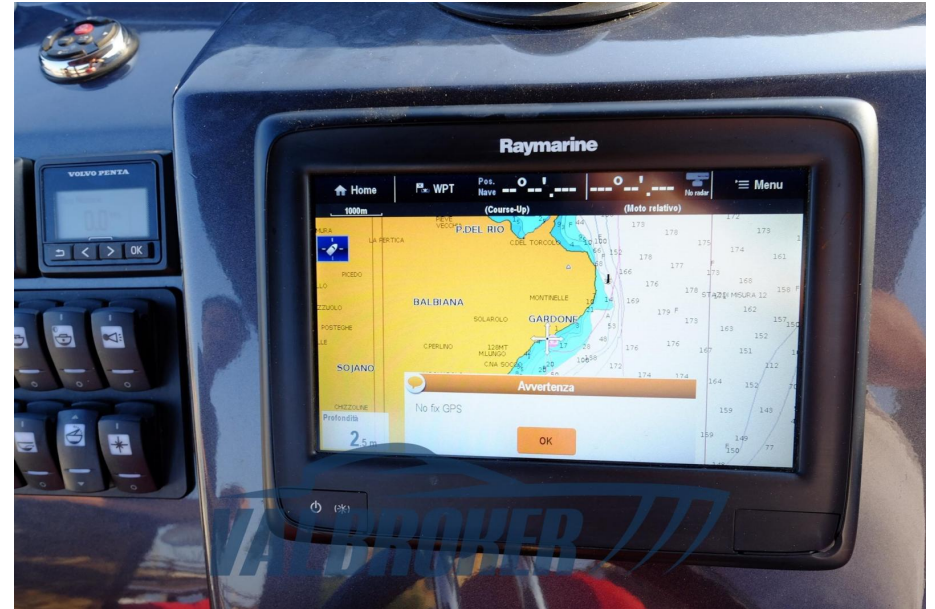


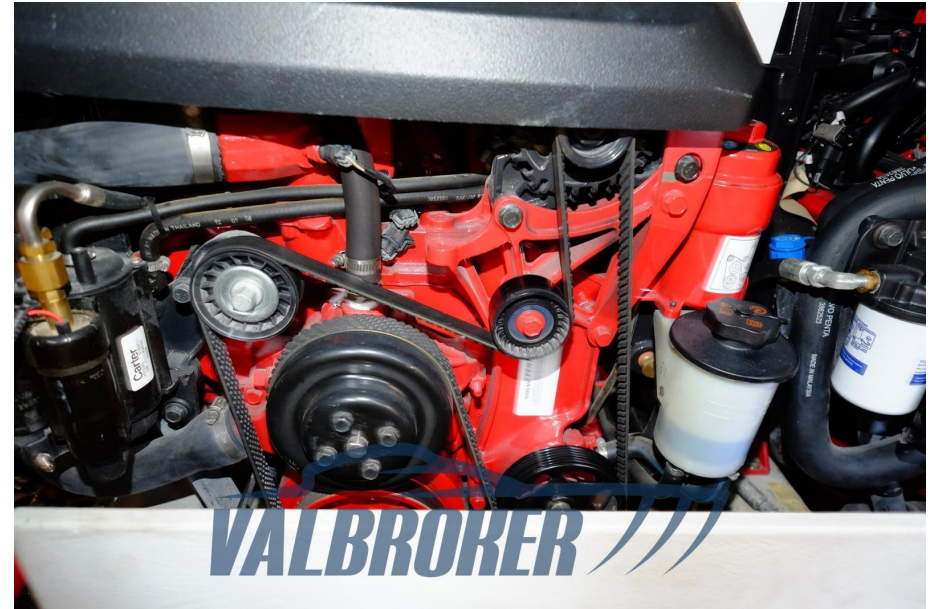


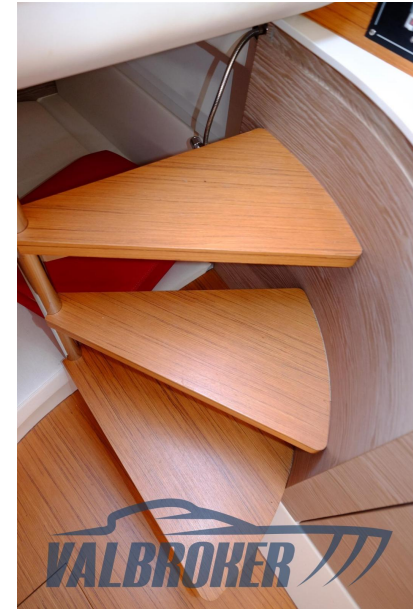














CE

CANTIERE : \_\_\_\_\_



NEED YACHT

MILANO S.r.l.

MODELLO : NEED 32

DESIGN CATEGORY

B

 = 1300 Kg MAX  10

402 kW MAX

 +   = 850 Kg

**VALBROKER**