



SALE PRE OWNED

hallberg rassy Hr 41

125 000 € All Tax Included

Description

Splendid Ketch completely refitted between 2014 and 2015: anti-osmosis treatment, new rigging, renovation of the electrical and water system, renovation of the furniture and interior panels, installed generator and watermaker, new sails, installation of navigation and communication systems, addition of 3rd rudder hinge, new steel windshield with openings, new shaft line, complete engine maintenance, painting of the blue bands, Teak milling and rubberization, new stanchions, rear platform with release raft housing, channel in the masts for the various systems, replacement of halyards (mixed textile steel) and related pulleys.

Central cockpit with teak drop-down table and LED light, central dinette with rectangular table and double sofa, one C-shaped and one long, container table for bottles with folding wings, the same can be transformed into a double bed (part C) and bunk bed (long part). Kitchenette with tilting 3-burner gas stove with oven, cockpit fridge, double sink, chest of drawers and pull-out work table. Double master cabin in the bow with bathroom with shower, opening for private access, guest cabin aft, the cabins are equipped with electric heating with thermostat, portable air conditioning at 220V in the dinette.

Document not valid for contractual purposes. information as provided to us is correct but not guaranteed.

Mediation fees 5% + VAT on the purchase price and not less than € 2000 + VAT.

Navigation equipment:

AG (Raymarine) C-Plot and C-plotter (Raymarine) C-plotter and AG (Raymarine)

Specifications

YEAR

1980

WIDTH

3.70

FUEL TANK CAPACITY

380

BATHROOMS

1

ENGINE HOURS

3600

LENGTH

12.53

DRAFT

1.84

CABINS

2

ENGINE MANUFACTURER

Volvo Penta D2-55

HORSE POWER

1 X 55 CV

General

TYPE	BRAND	MODEL	CURRENT LOCATION
Sailboat	hallberg rassy	Hr 41	Lazio

Dimensions / Performance

WEIGHT (T)	FUEL CAPACITY (L)	CRUISING SPEED (ND)	TOP SPEED (ND)
9.90	380	9	6

Building / facilities

HULL MATERIAL	AMOUNT OF CABINS	BERTHS	BATHROOM(S)
Vetroresina	2	8	1

Engine room

ENGINE	NUMBER OF ENGINES HORSE POWER (CV)	ENGINE HOURS	FUEL
Volvo Penta D2-55	1 x 55	3600	Diesel

Electricity / air conditioning

ENGINE BATTERY	BATTERY CHARGER	GENERATOR	HEATING SYSTEM

Navigation equipment

TRACER	RADAR	AUTO PILOT	VHF
NAVIGATION COMPASS	SONAR	WIND INSTRUMENTS	SPEEDOMETER
ANCHOR			

Galley / Laundry / Entertainment

OVEN

FRIDGE

TV

Deck equipment

DECK SHOWER

BIMINI

Safety equipment / miscellaneous

EPIRB

LIFE
RAFT

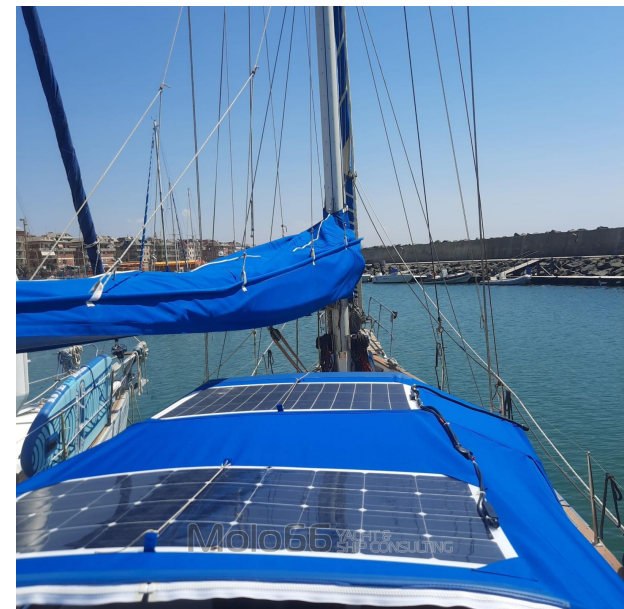
BILGE PUMP

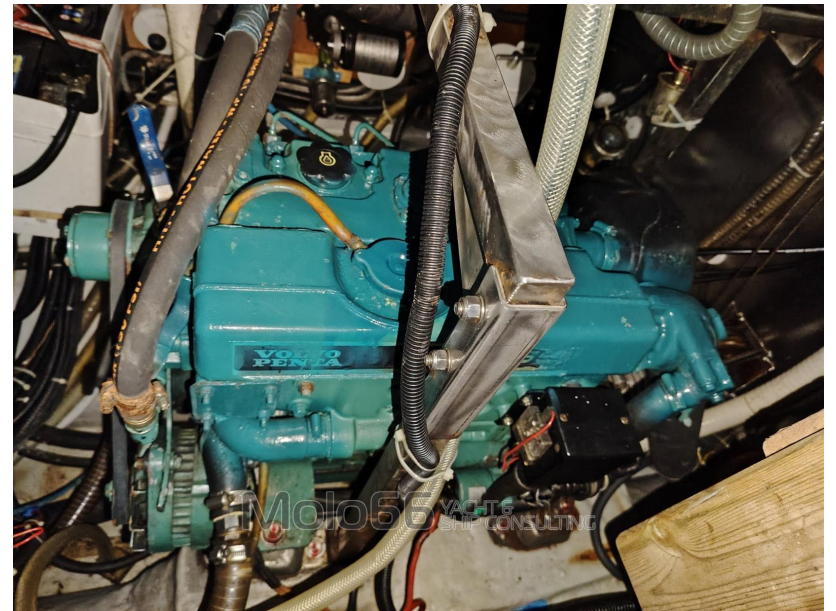
Sails

GENOA SAIL

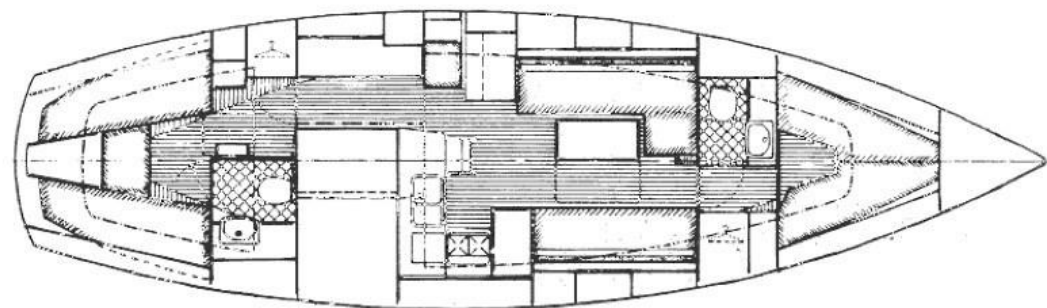
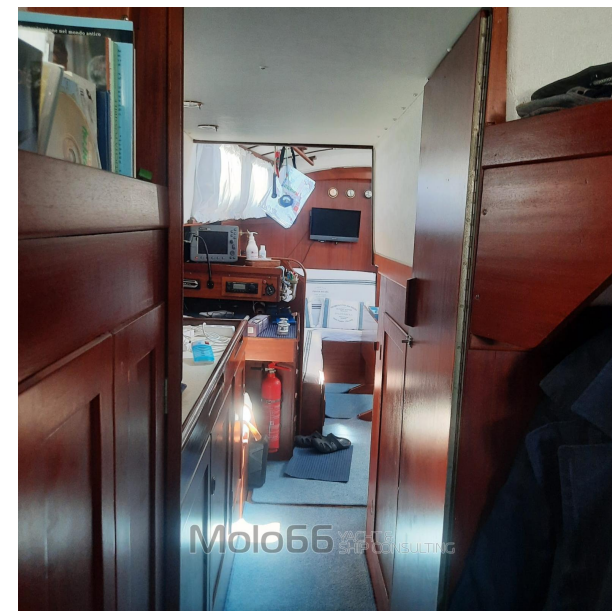
MAIN SAIL











Click on the part of the yacht that you want to see a photo of

[Back to Hallberg-Rassy 41 main page](#)

Molo66 YACHT & SHIP CONSULTING
Hallberg-Rassy