

SALE PRE OWNED

**bali Catspace**

**545 000 € All Tax Included**

## Description

The CAP MED YACHT Consulting team is pleased to offer for sale this magnificent BALI CATSPACE from 2021, in 4 cabins / 4 sdb's version, equipped with 2 x 40CH YANMAR (1800 h), in perfect condition.

1st hand, boat regularly serviced and maintained by its owners.

This Bali model features a Fly-bridge.

Pack Élégance : Courtesy lighting in the cockpit/carré, electric aft davits, Raymarine Electronics Pack, Axiom 7" GPS plotter, autopilot, 2 additional service batteries, ...

Battened mainsail, 2 automatic reefs, self-tacking solent, lazy-bag/lazy jack.

Options : Watermaker, gas plancha, underwater spotlights, EPIRB beacon, ...

LOA takeover possible (contact us)

Careenage/Antifouling 1 time per year.

Additional photos and detailed inventory on request

Contact: Michel PERAN / +33 (0)6 52 52 06 91

## Specifications

YEAR

2021

WIDTH

6.55

GUESTS CRUISING

8

BATHROOMS

4

ENGINE HOURS

1800

LENGTH

12.31

DRAFT

1.19

CABINS

4

ENGINE MANUFACTURER

YANMAR 3JH40

HORSE POWER

2 X 40 CV

**General**

---

|                  |        |          |                 |
|------------------|--------|----------|-----------------|
| TYPE             | BRAND  | MODEL    | GUESTS CRUISING |
| Multihull        | bali   | Catspace | 8               |
| CURRENT LOCATION | Hyères |          |                 |

**Dimensions / Performance**

---

|            |                     |                |
|------------|---------------------|----------------|
| WEIGHT (T) | CRUISING SPEED (ND) | TOP SPEED (ND) |
| 9.00       | 7                   | 11             |

**Building / facilities**

---

|               |               |                  |        |
|---------------|---------------|------------------|--------|
| HULL MATERIAL | DECK MATERIAL | AMOUNT OF CABINS | BERTHS |
| POLYESTER     | POLYESTER     | 4                | 8      |
| BATHROOM(S)   | 4             |                  |        |

**Engine room**

---

|              |                                    |             |              |
|--------------|------------------------------------|-------------|--------------|
| ENGINE       | NUMBER OF ENGINES HORSE POWER (CV) | ENGINE YEAR | ENGINE HOURS |
| YANMAR 3JH40 | 2 x 40                             | 2021        | 1800         |
| PROPULSION   | FUEL                               |             |              |
| Sail Drive   | Diesel                             |             |              |

### Electricity / air conditioning

---

|                |                 |                 |          |
|----------------|-----------------|-----------------|----------|
| ENGINE BATTERY | BATTERY CHARGER | SERVICE BATTERY | INVERTER |
| SOLAR PANEL    |                 |                 |          |

### Navigation equipment

---

|                    |           |            |             |
|--------------------|-----------|------------|-------------|
| GPS                | TRACER    | AUTO PILOT | VHF         |
| NAVIGATION COMPASS | AIS       | SONAR      | SPEEDOMETER |
| ANCHOR             | FLYBRIDGE |            |             |

### Galley / Laundry / Entertainment

---

|        |           |         |       |
|--------|-----------|---------|-------|
| OVEN   | MICROWAVE | FREEZER | GRILL |
| FRIDGE | STOVE     | SINK    |       |

### Deck equipment

---

|            |             |                     |                     |
|------------|-------------|---------------------|---------------------|
| WINDLASS   | GANGWAY     | SWIM LADDER         | NAVIGATION LIGHTING |
| BIMINI TOP | DECK SHOWER | SUNBATHING CUSHIONS | UNDERWATER LIGHTS   |

### Safety equipment / miscellaneous

---

|       |           |             |            |
|-------|-----------|-------------|------------|
| EPIRB | LIFE RAFT | LIFE JACKET | BILGE PUMP |
|-------|-----------|-------------|------------|

### Boat equipment description

---

4 cabins / 4 toilets version

2 x 40 HP Yanmar engine

\*\* Pack Excellence \*\*

Ecological package including freshwater purification filter and membrane bioreactor for wastewater filtration

Combined 70 Amp charger - 12V/220V converter - 1600VA

Battery controller

2 additional gel batteries 12 V-130 Amp

1 electric winch for mainsail halyard, furling line and davit operation

Automatic reefing on 1st and 2nd reef

1000W vertical electric windlass

Pneumatically-assisted aft bay lifting system

Opening bay between saloon and forward cockpit

Sliding side bays

Courtesy lighting in cockpit / saloon

265L fridge-freezer with dedicated 220V converter

Gas oven

Forward cabin shelf convertible to 3rd berth

Rear bench seats (seats and backrests)

Forward cockpit cushions

Fly cushions (seats and backrests)

Helmsman's seat cushions

Gas-filled engine holds and forward cockpit locker covers

Aft davits with electric reassembly system

Comfort swim ladder with handrails and wide teak steps

Additional 300 L water tank (total capacity 760 L)

Cockpit shower with hot and cold water

Raymarine electronics including : P70S autopilot, RAY 63 VHF with chart table, AXIOM 7" GPS plotter 2 coats of antifouling with Epoxy primer

Safety equipment for 8 persons with life raft (without bowser)

**\*\* Rigging / Sails \*\***

Battened mainsail and Solent reinforced in Dacron with anti-UV band + lazy bag BALI Cat Space & lazy jack

**\*\* Mechanics - Safety equipment**

2 Solar panel kit (2 x 100W)

**\*\* Comfort \*\***

4 Electric freshwater WC

**\*\* Exterior fittings \*\***

Helm station bimini

Kit of 2 removable bow cockpit tables

Foredeck sunbathing cushions

Flybridge sunbeds (with backslash)

Aft skirt and platform protection liston

Retractable stern cleats

HB polywood engine mount on aft beam

**\*\* Miscellaneous \*\***

Dinghy

Tender engine

8-seater survival craft

AIS transceiver

Microwave oven

2 underwater spotlights

Emergency beacon (EPIRB)

**Sails**

---

GENOA SAIL

MAIN SAIL



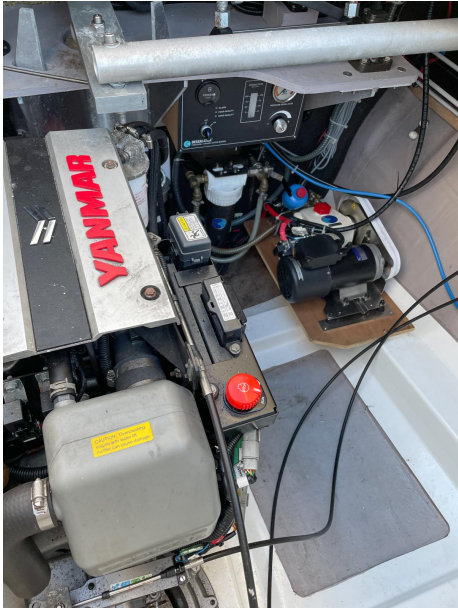
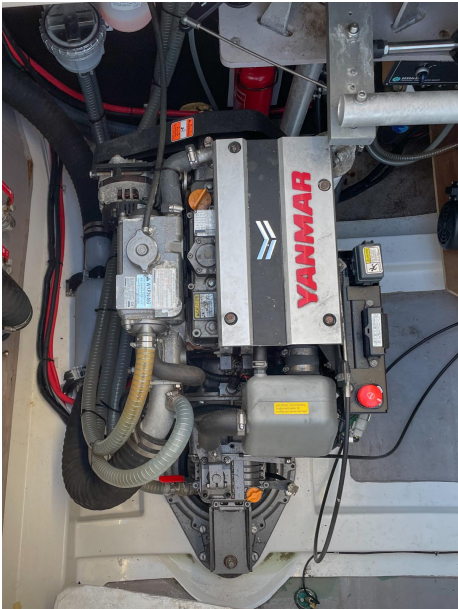












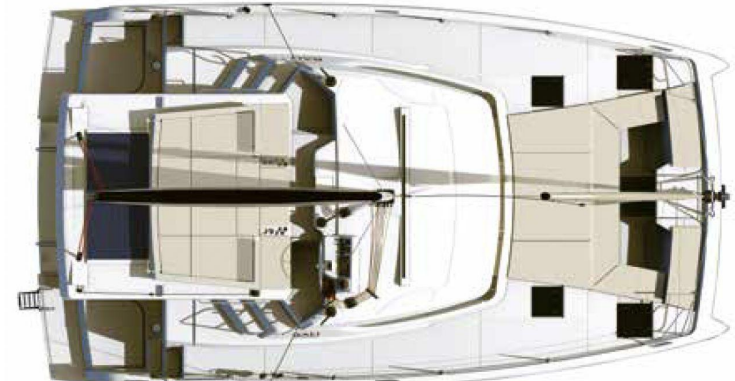




**4 CABIN VERSION / 4 BATHS**  
Version 4 cabines / 4 sdb



**NACELLE**  
Nacelle



**DECK AND FLYBRIDGE**  
Pont et flybridge