



SALE PRE OWNED

abacus marine Abacus 62 

## Description

Boat kept in constant maintenance, available for any test.

- Cut motors and inverter;
- Complete service of generators;
- Adjustment and cleaning of axle seals;
- Painting of the engine room entrance compartment and marine bathroom;
- Refrigerator and freezer replacement;
- Overhaul of 12kg fixed powder system;
- Overhaul of air conditioning system plus sanitization;
- Internal lighting system and external LED passage;
- Annual sailor on board;
- Annual polishing;
- Hull brought to zero in 2022;
- 2023 inverter overhaul of 220 lines in navigation;
- Replacement of original axle seals, with brass cooling water connection.

Navigation equipment:

GPS (Raymarine touch, postazione interna e fly).

Staging and technical:

## Specifications

YEAR

**2007**

WIDTH

**5.00**

FUEL TANK CAPACITY

**3200**

CABINS

**3**

ENGINE MANUFACTURER

**Caterpillar C18**

HORSE POWER

**2 X 1014 CV**

LENGTH

**18.66**

DRAFT

**0.88**

GUESTS CRUISING

**12**

BATHROOMS

**1**

ENGINE HOURS

**970**

**General**

---

TYPE	BRAND	MODEL	GUESTS CRUISING
Motorboat	abacus marine	Abacus 62	12
CURRENT LOCATION	Polignano, puglia		

**Dimensions / Performance**

---

WEIGHT (T)	FUEL CAPACITY (L)	CRUISING SPEED (ND)	TOP SPEED (ND)
31.00	3200	30	34

**Building / facilities**

---

AMOUNT OF CABINS	BERTHS	BATHROOM(S)
3	6	1

**Engine room**

---

ENGINE	NUMBER OF ENGINES HORSE POWER (CV)	ENGINE HOURS
Caterpillar C18	2 x 1014	970

**Electricity / air conditioning**

---

ENGINE BATTERY	BATTERY CHARGER	AIR CONDITIONING
----------------	-----------------	------------------

**Navigation equipment**

---

GPS

**Galley / Laundry / Entertainment**

---

TV

**Deck equipment**

---

DECK SHOWER

**Safety equipment / miscellaneous**

---

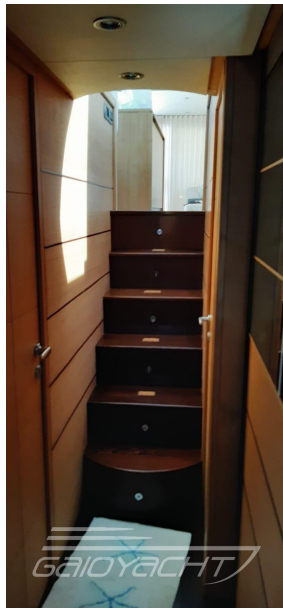
LIFE  
RAFT





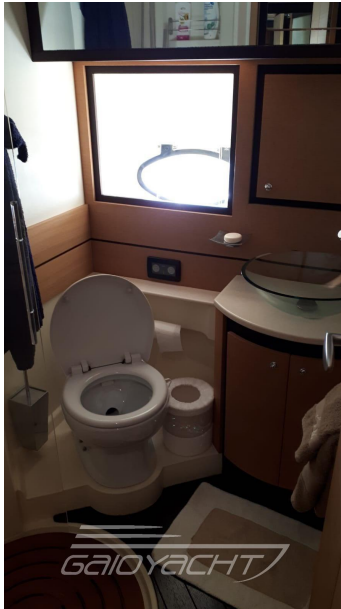


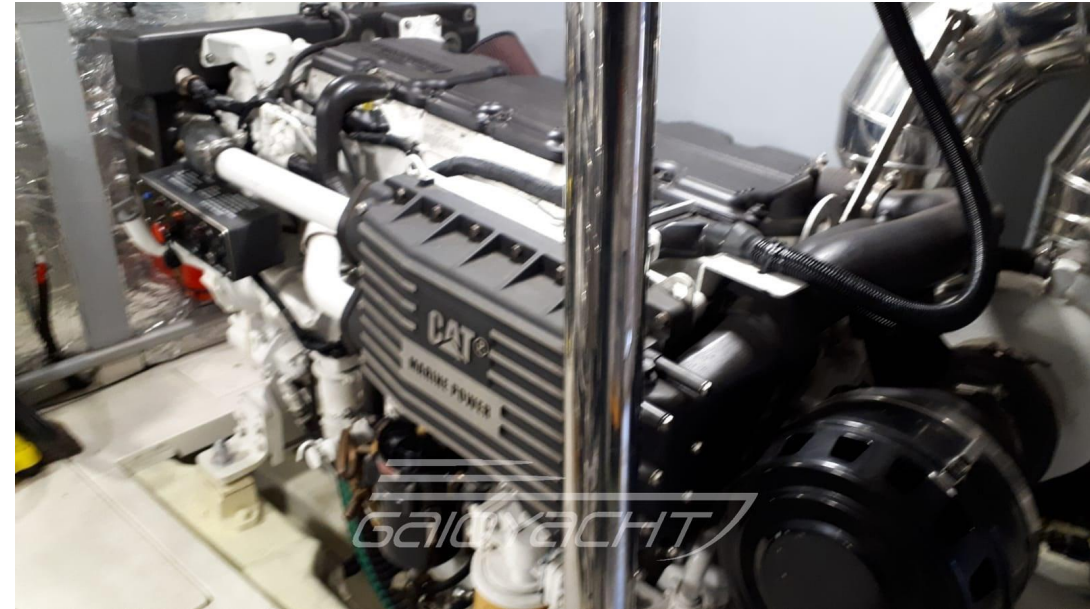












## ABACUS 62<sup>1</sup>

