



SALE PRE OWNED

amel Super maramu

160 000 € + VAT

## Description

SUPER MARAMU, 1991, VOLVO D2-75F (2012), 75 hp (2475 hrs), Bow thruster, 2 electric genoa winches – Lewmar 56ST (starboard winch renewed in 2014), Aluminium bowsprit, Cockpit bimini top, Sun awning, Davits (transom), Deck stepped furling mast (electrical engine furler replaced in 2023), Stainless steel cable standing rigging from original, Furlable main sail (2013), Electrical genoa roller furling drum, Furling genoa (2010), Asymmetric spinnaker, n board autopilot on wheel sprocket, Second Raymarine inboard tiller autopilot & SPX30 gyroscopic & ST7002 pupiter (2009), Package lock / depth / wind – Raymarine 170 (2017), GPS and chartplotter (nav station) – Axiom 9 pouces (2019), GPS and chartplotter (cockpit) – Raymarine ES75 7 pouces Hybrid touch (2017), Electronic navigation charts – Navionics Silver Europe (2017), Radar with radome radar fitted on mast – Raymarine Quantum (2019), AIS 650 Transponder CLASS B (emission and reception) (2017), DSC VHF at chart table – Ray 50 (2017), Iridium phone (2009), PC + windows, Fridge unit 12 V (front opening door), 220 V shore power + 24V battery charger – Dolphin Pro 40A, Service batteries – 6 x 104Ah AGM (2021), Interior 220 sockets, Generator 220 V – Nanni Diesel 7.5Kw (2014) – +/- 650H, Watermaker 12 V (to be serviced), Solar panels on roof (2023), Liferaft – Plastimo 6 places Transocean moins de 24h (2017), Dinghy – Highfield (2023), Outboard engine – Suzuki DF-6Hp (2015), Located Brittany. For more information or to make an appointment for a visit, contact : Jean-Baptiste Lemaire + 33 6 10 25 00 03 – [jb@antipode-yachts.com](mailto:jb@antipode-yachts.com)

Owner speaks : We decided to buy Platon in 2008 with the aim to start sailing long-distance cruises. On the sound advice from a professional skipper that

## Specifications

YEAR

**1991**

WIDTH

**4.60**

CABINS

**2**

ENGINE HOURS

**2475**

LENGTH

**15.97**

FUEL TANK CAPACITY

**600**

ENGINE MANUFACTURER

**VOLVO D2-75F (2012)**

HORSE POWER

**0 X 75 CV**

**General**

---

TYPE	BRAND	MODEL	CURRENT LOCATION
Voilier	amel	Super maramu	Bretagne

**Dimensions / Performance**

---

WEIGHT (T)	FUEL CAPACITY (L)
9999.99	600

**Building / facilities**

---

HULL MATERIAL	HULL COLOR	AMOUNT OF CABINS
POLYESTER	white	2

**Engine room**

---

ENGINE	NUMBER OF ENGINES HORSE POWER (CV)	ENGINE HOURS
VOLVO D2-75F (2012)	0 x 75	2475



















 **Antipode**  
YACHT - BROKERAGE





 **Antipode**  
YACHT - BROKERAGE

































 **Antipode**  
YACHT BROKERAGE









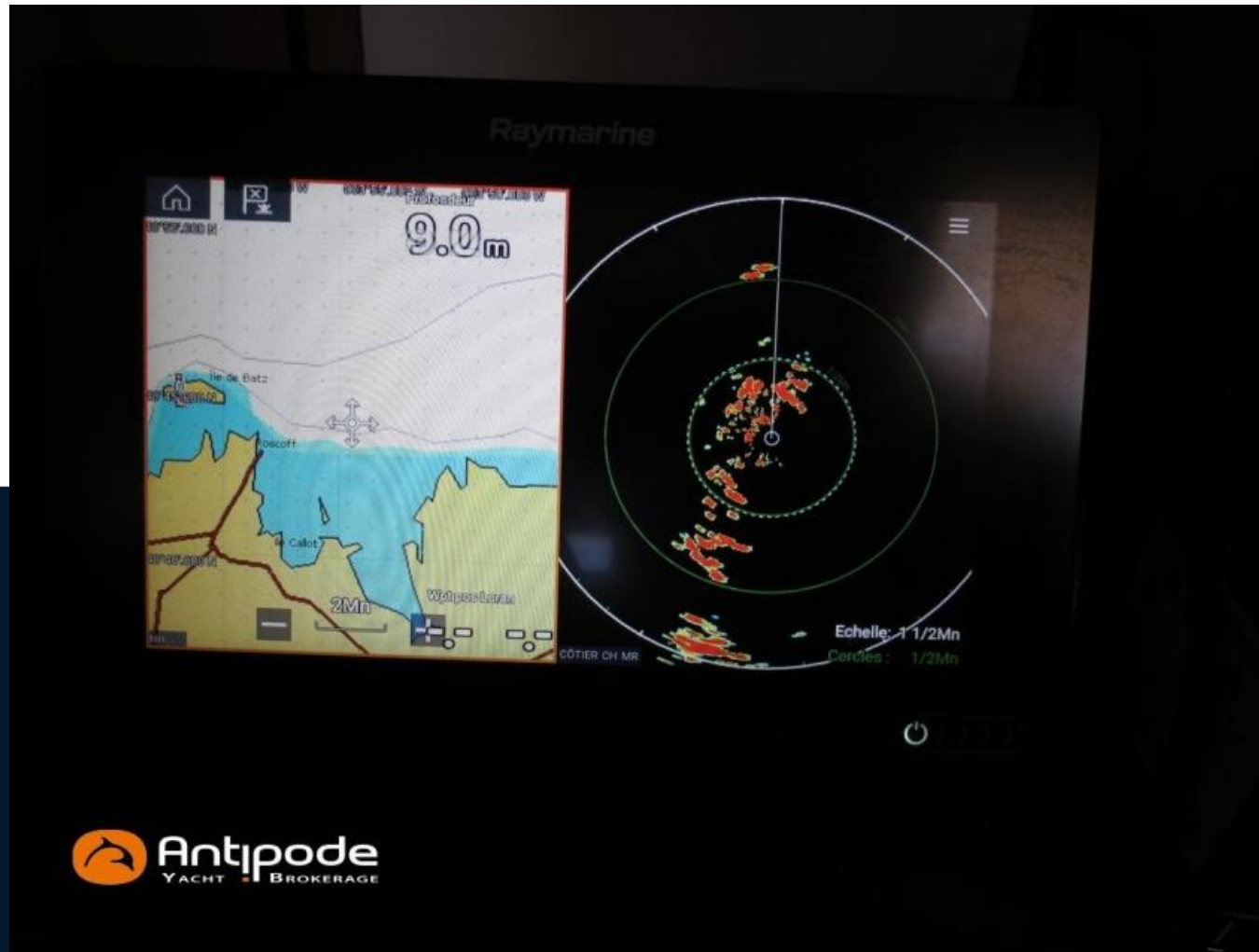










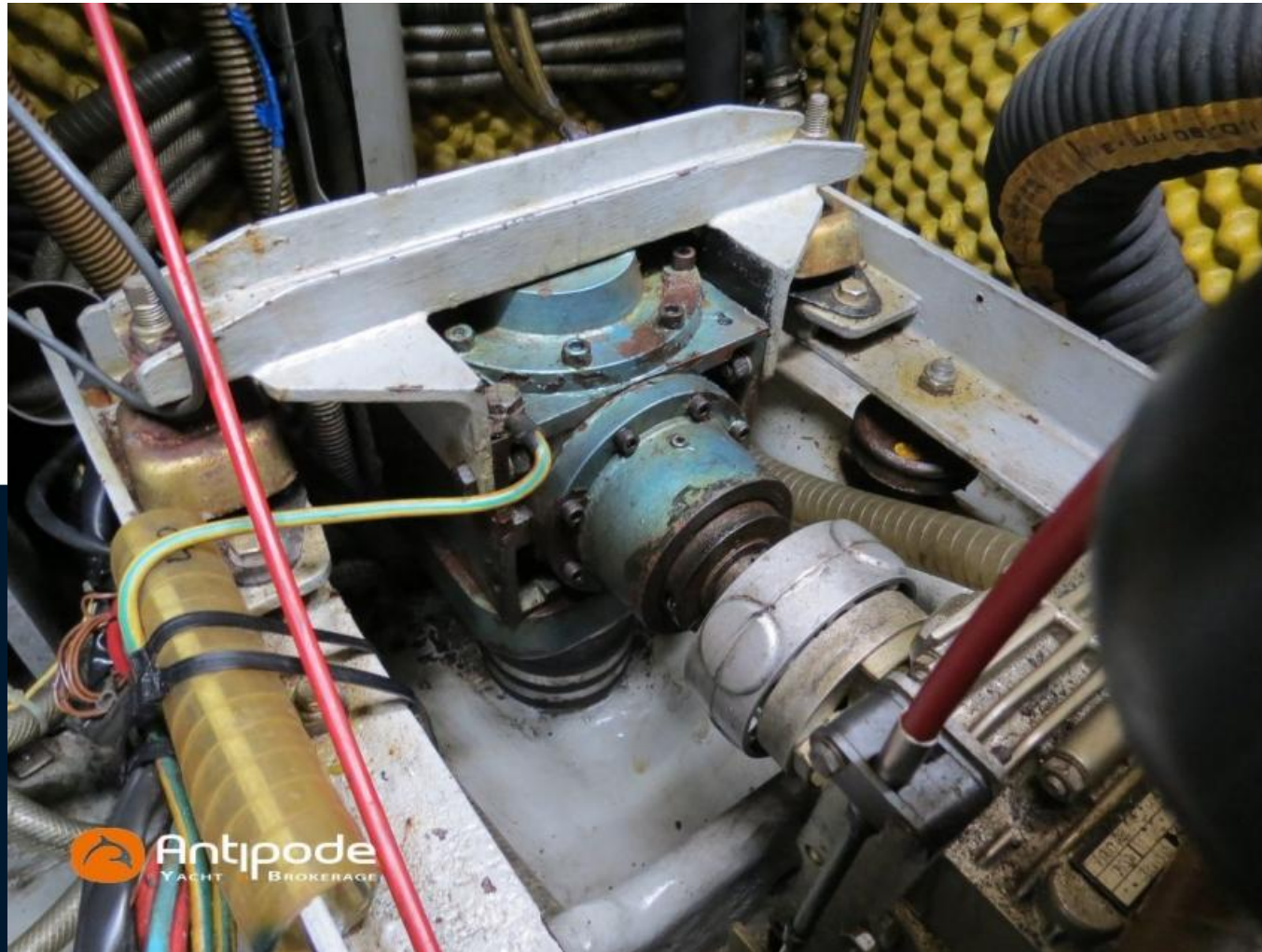






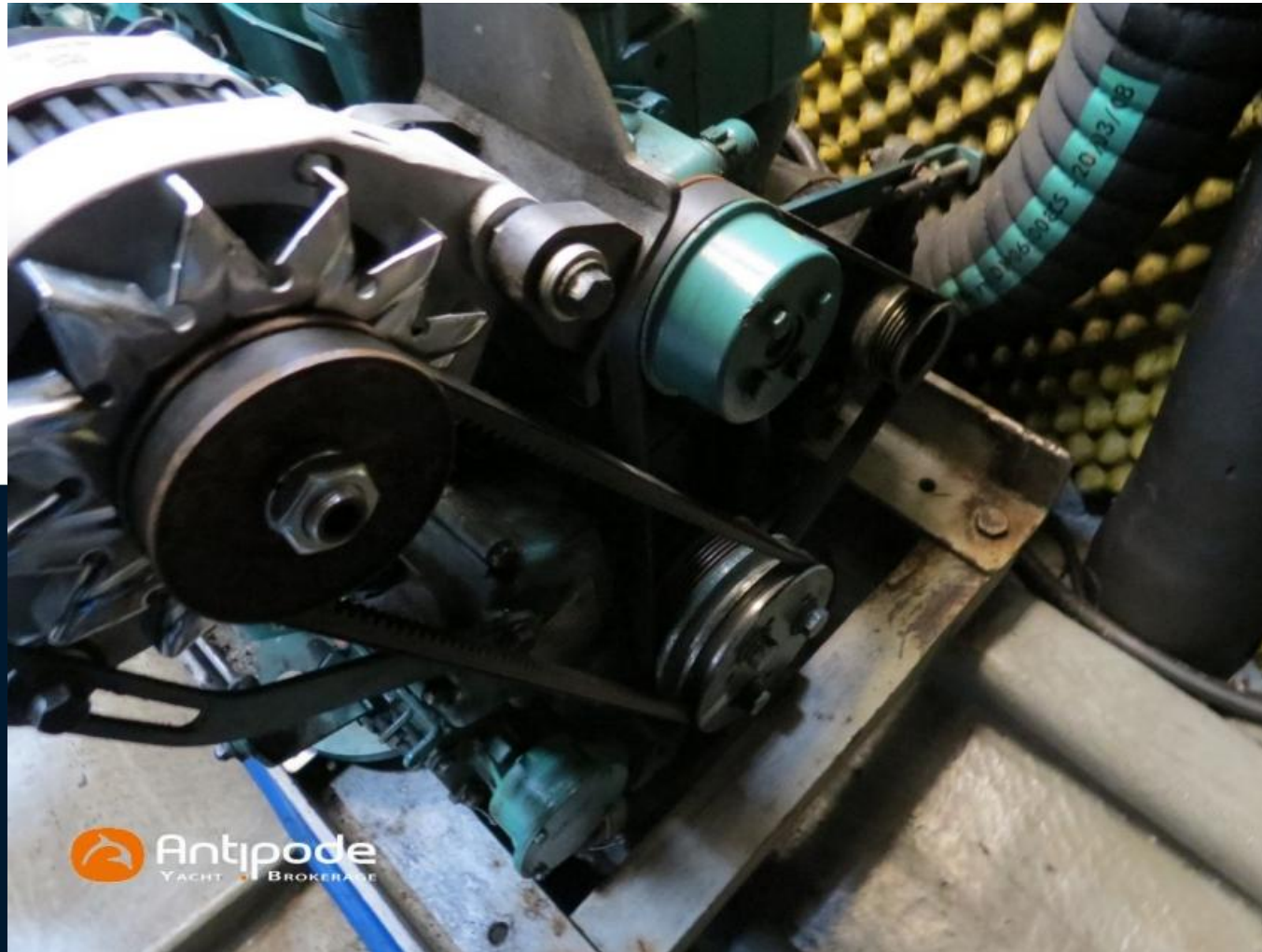
































 **Antipode**  
YACHT BROKERAGE







 **Antipode**  
YACHT BROKERAGE







