



SALE NEW

rodman Catamaran passenger ship 248 pax r 4 200 000 € + VAT

## Description

Passenger Catamaran, New in 2023, Dutch Commercial Flag.

Its sister ship is also available for sale at the same price and under the same conditions.

Possibility of rental or leasing upon request.

248 passengers, 3 crew members, and 63 bicycles.

Powered by 2 x MAN D2868LE443 with 16.16 liters, 8 cylinders, and 900 HP at 2,100 RPM. The vessel has a fuel capacity of 2,000 liters and can achieve a speed of 21.5 knots.

Should you require further details, please inquire.

## Specifications

YEAR

2023

WIDTH

9.09

GUESTS CRUISING

248

ENGINE MANUFACTURER

MAN D2868LE443 900  
CV - 16.16l 8 Cylinders

HORSE POWER

2 X 900 CV

LENGTH

34.95

DRAFT

1.41

BATHROOMS

2

ENGINE HOURS

100

## General

TYPE	BRAND	MODEL	GUESTS CRUISING
Multihull	rodman	Catamaran passenger ship 248 pax rodman 115	248
CURRENT LOCATION			
Antwerp			

## Dimensions / Performance

TOP SPEED (ND)
21

## Building / facilities

HULL MATERIAL	BATHROOM(S)
Polyester fiberglass	2

## Engine room

ENGINE	NUMBER OF ENGINES HORSE POWER (CV)	ENGINE YEAR	ENGINE HOURS
MAN D2868LE443 900 CV - 16.16l 8 cylinders	2 x 900	2023	100
FUEL			
Diesel			

**Electricity / air conditioning**

---

ENGINE BATTERY

BATTERY  
CHARGER

SERVICE BATTERY

GENERATOR

**Navigation equipment**

---

GPS

TRACER

RADAR

NAVIGATION COMPASS

AIS

**Safety equipment / miscellaneous**

---

EPIRB

**Safety equipment / miscellaneous**

---

As for safety, lifesaving and nautical material, the vessel shall comply with the European Standard Laying Down Technical Requirements for Inland Navigation Vessels ES (TRIN).

All equipment installed on board should be provided with CE certification, pursuant to European Standard Laying Down Technical Requirements for Inland Navigation Vessels ES (TRIN).

In principle, the following lifesaving equipment shall be provided:

☒ 3 Lifebuoys, two of them provided with light and 30 m. lifeline.  
☒ 253 Life Jackets and 25 life jackets for children. All life jackets shall be provided with light.

☒ 12 Hand flares, if required by regulations in effect

☒ 2 Radar Transponders, if required by regulations in effect

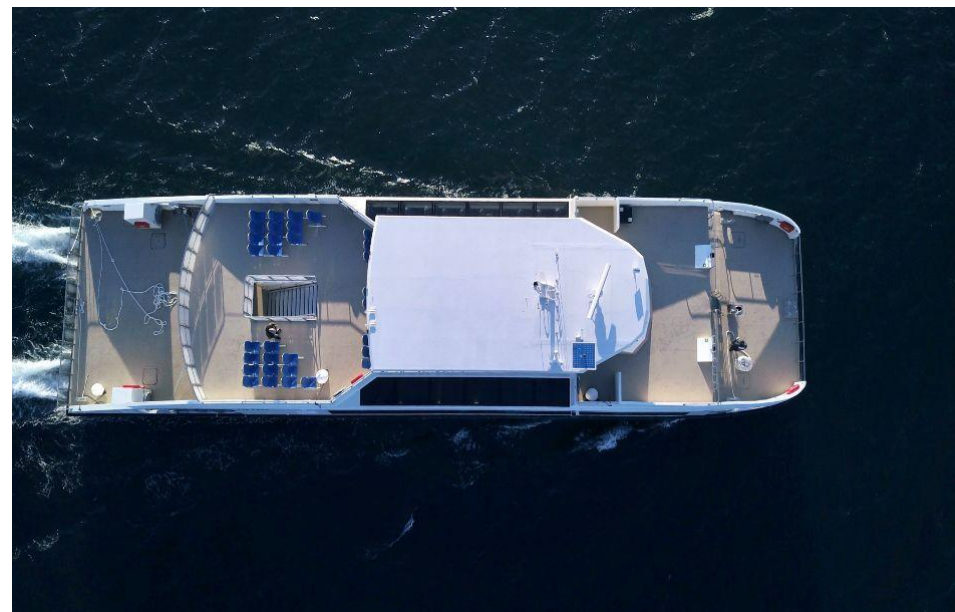
☒ 1 Line thrower, if required by regulations in effect

☒ 1 C Type Approved First Aid Kit

☒ If ES (TRIN) regulations so require it, the vessel will be fitted with a dinghy located aft the upper deck.

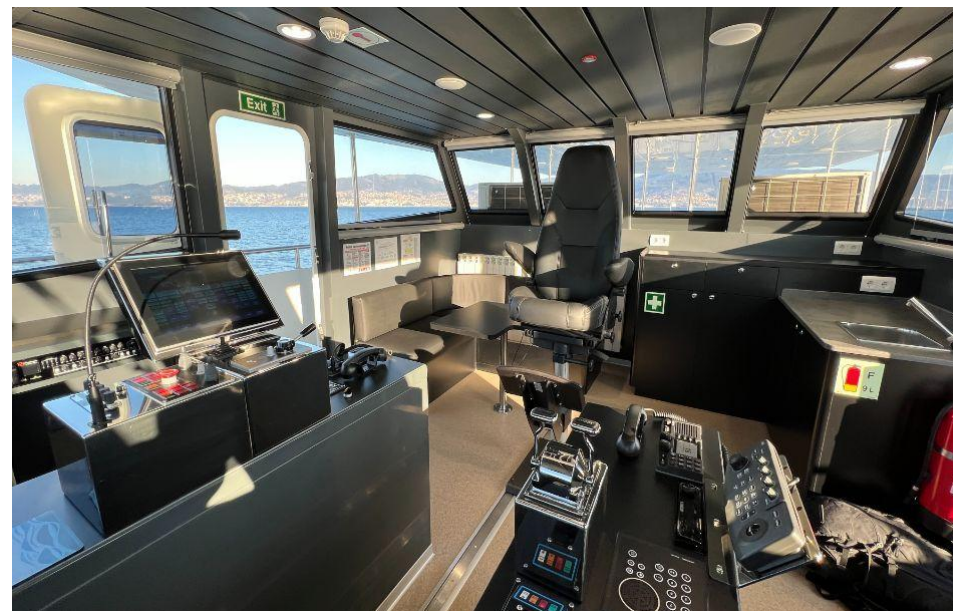
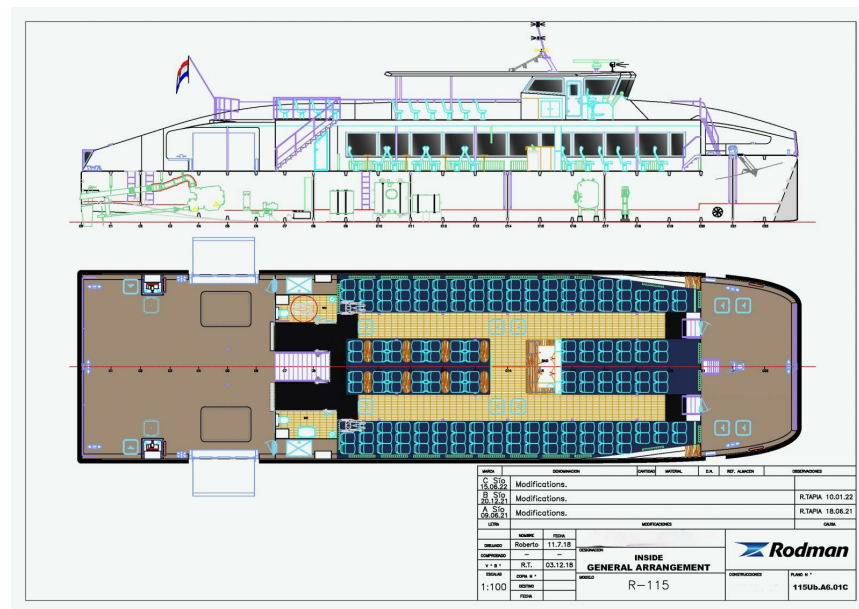
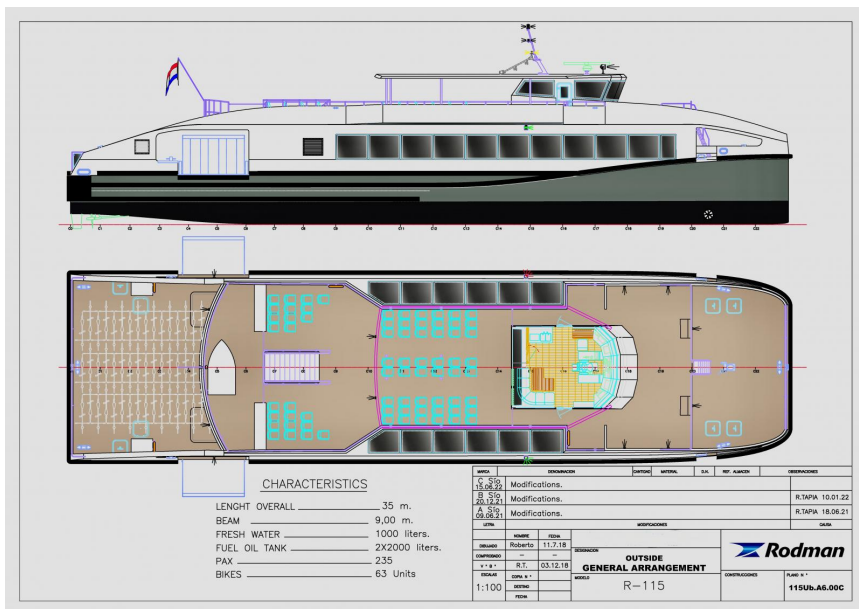
Lifejackets shall be stowed in storage space under space in stairs connecting both decks.





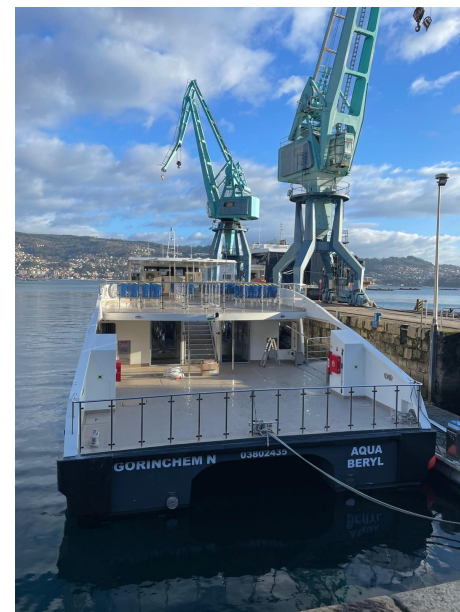
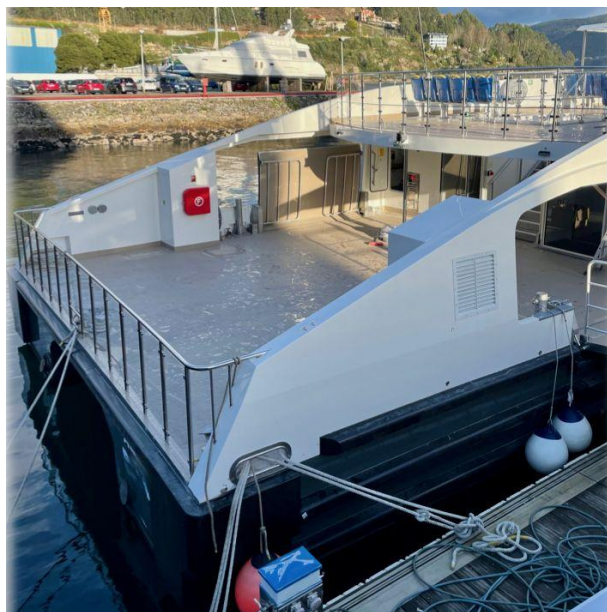


# Rodman Catamaran Passenger Ship 248 Pax Rodman 115





# Rodman Catamaran Passenger Ship 248 Pax Rodman 115

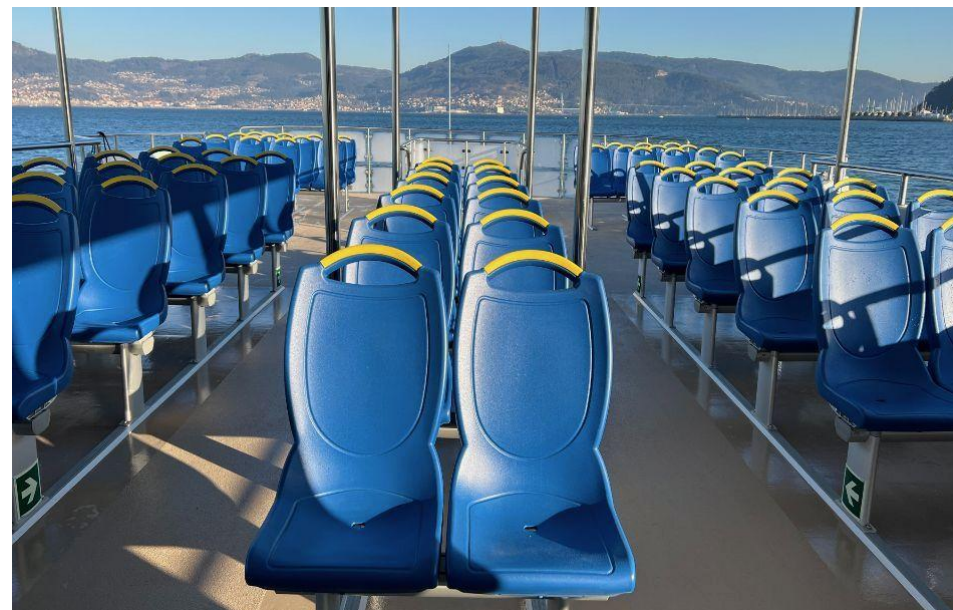








# Rodman Catamaran Passenger Ship 248 Pax Rodman 115



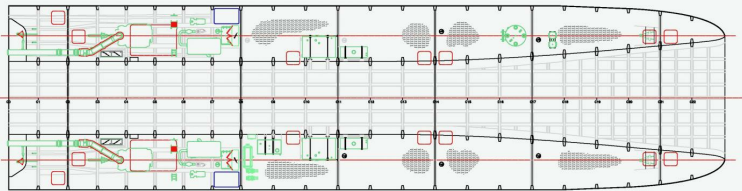
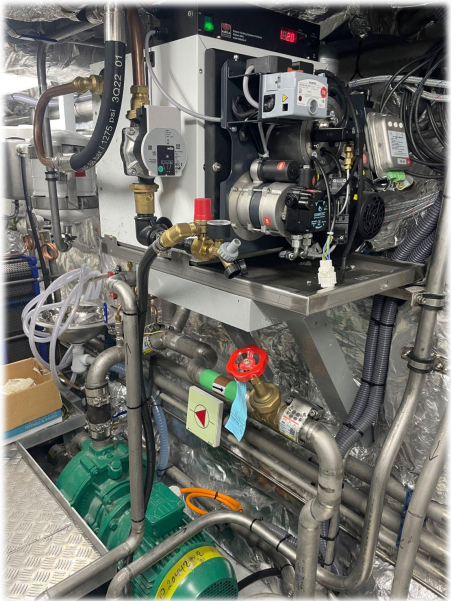


# Rodman Catamaran Passenger Ship 248 Pax Rodman 115





# Rodman Catamaran Passenger Ship 248 Pax Rodman 115



REVISION	DESCRIPTION	DATE	BY	CHK.	REV.	REMARKS
1	Modifications.	11.7.18	Robert			R.TAPPA 10.01.22
2	Modifications.					R.TAPPA 18.06.21
3	Modifications.					DATE
4	Modifications.					DATE
5	Modifications.					DATE
6	Modifications.					DATE
7	Modifications.					DATE
8	Modifications.					DATE
9	Modifications.					DATE
10	Modifications.					DATE
11	Modifications.					DATE
12	Modifications.					DATE
13	Modifications.					DATE
14	Modifications.					DATE
15	Modifications.					DATE
16	Modifications.					DATE
17	Modifications.					DATE
18	Modifications.					DATE
19	Modifications.					DATE
20	Modifications.					DATE
21	Modifications.					DATE
22	Modifications.					DATE
23	Modifications.					DATE
24	Modifications.					DATE
25	Modifications.					DATE
26	Modifications.					DATE
27	Modifications.					DATE
28	Modifications.					DATE
29	Modifications.					DATE
30	Modifications.					DATE
31	Modifications.					DATE
32	Modifications.					DATE
33	Modifications.					DATE
34	Modifications.					DATE
35	Modifications.					DATE
36	Modifications.					DATE
37	Modifications.					DATE
38	Modifications.					DATE
39	Modifications.					DATE
40	Modifications.					DATE
41	Modifications.					DATE
42	Modifications.					DATE
43	Modifications.					DATE
44	Modifications.					DATE
45	Modifications.					DATE
46	Modifications.					DATE
47	Modifications.					DATE
48	Modifications.					DATE
49	Modifications.					DATE
50	Modifications.					DATE
51	Modifications.					DATE
52	Modifications.					DATE
53	Modifications.					DATE
54	Modifications.					DATE
55	Modifications.					DATE
56	Modifications.					DATE
57	Modifications.					DATE
58	Modifications.					DATE
59	Modifications.					DATE
60	Modifications.					DATE
61	Modifications.					DATE
62	Modifications.					DATE
63	Modifications.					DATE
64	Modifications.					DATE
65	Modifications.					DATE
66	Modifications.					DATE
67	Modifications.					DATE
68	Modifications.					DATE
69	Modifications.					DATE
70	Modifications.					DATE
71	Modifications.					DATE
72	Modifications.					DATE
73	Modifications.					DATE
74	Modifications.					DATE
75	Modifications.					DATE
76	Modifications.					DATE
77	Modifications.					DATE
78	Modifications.					DATE
79	Modifications.					DATE
80	Modifications.					DATE
81	Modifications.					DATE
82	Modifications.					DATE
83	Modifications.					DATE
84	Modifications.					DATE
85	Modifications.					DATE
86	Modifications.					DATE
87	Modifications.					DATE
88	Modifications.					DATE
89	Modifications.					DATE
90	Modifications.					DATE
91	Modifications.					DATE
92	Modifications.					DATE
93	Modifications.					DATE
94	Modifications.					DATE
95	Modifications.					DATE
96	Modifications.					DATE
97	Modifications.					DATE
98	Modifications.					DATE
99	Modifications.					DATE
100	Modifications.					DATE

**Rodman**

**INSIDE GENERAL ARRANGEMENT**

**R-115**

**115Ub.A6.02C**

