



SALE PRE OWNED

neel Neel 45 evolution

420 000 € ALL TAX INCLUDED

Description

NEEL 45 Evolution N°27 is a rare performance centreboard version, significantly improving upwind capabilities compared to fixed-keel models.

Launched in May 2019 and designed by Joubert/Nivelt, this award-winning trimaran offers a unique 60 m² loft-style saloon flooded with natural light, combining exceptional space, stability and offshore performance.

This German-flagged, VAT-paid unit is a 5-cabin charter version operated until mid-2024 by her experienced first owner. She has always been professionally maintained and regularly upgraded.

Recently completed:

Fresh antifouling (07/2025)

Full technical service

Annual refit

Powered by a Volvo Penta D2-55 Saildrive (1,875h), she features 480W solar panels, Mastervolt service batteries (2024), 2000W inverter and full 220V installation.

Full Raymarine electronics package including radar, autopilot, GPS, wind instruments, log and depth sounder.

The centreboard configuration provides superior sailing performance while allowing access to shallow anchorages.

Specifications

YEAR

2019

LENGTH

14.22

WIDTH

8.50

DRAFT

2.60

CABINS

5

BATHROOMS

2

ENGINE MANUFACTURER

**Volvo Penta D2-55
Saildrive**

ENGINE HOURS

1875

HORSE POWER

1 X 55 CV

General

Type trimaran	Brand neel	Model Neel 45 evolution	Current Location Le lavandou
-------------------------	----------------------	-----------------------------------	--

Dimensions/performance

Weight (T) 7.00	Cruising Speed (Nd) 8.00	Top Speed (Nd) 12.00	Consumption (L/h) 5
---------------------------	------------------------------------	--------------------------------	-------------------------------

Building/facilities

Hull Material GRP Sandwich	Hull Color Gris	Amount Of Cabins 5	Berths 10
--------------------------------------	---------------------------	------------------------------	---------------------

Number Of Bathrooms 2	Description 60 m ² central panoramic loft, equipped kitchen with 3 burners and oven, double drawer refrigerator + freezer, hot water, pressurized water, Webasto heating, mobile watermaker, 2 electric toilets, 2 showers, ample storage space in insulated floats.
---------------------------------	---

Engine Room

Engine
Volvo Penta D2-55 Saildrive

Horse Power
1x55CV

Engine Year
2019

Engine Hours
1875

Propeller Type
Saildrive

Propellers
Folding propeller

Fuel
Diesel

Outboard Motor

Description
Volvo Penta D2-55 serviced in 2025, saildrive transmission, folding propeller. Regular professional maintenance. New antifouling 07/2025.

Electricity/air Conditioning

Engine Battery

Battery Charger

Battery Service

Inverter

Heating System

Water Maker

Compressor

Solar Panel

Description
Complete 220V installation, 4 x 220V sockets, 480W solar panels, Mastervolt 2024 service park, 2000W converter, alternators, charger.

Navigation Equipment

GPS	Tracer	Radar	Autopilot
Tridata	VHF	Navigation Compass	Indicator
Sonar	Wind Instruments	Speedometer	Anchor

Description Navigation Equipment

Complete Raymarine package: radar, GPS, autopilot, wind vane, anemometer, depth sounder, log, chart plotter.

Galley/laundry/entertainment

Oven	Freezer	Fridge	Stove
Sink			

Deck Equipment

Windlass

Swim Ladder

Mooring Winch

Navigation Lighting

Bimini Top

Deck Shower

Canopy

Sunbathing Cushions

Description Deck Equipment

The deck layout of the NEEL 45 Evolution is designed for safety, efficiency and comfort at sea.

The spacious cockpit is protected by a semi-rigid bimini providing excellent sun protection. Cockpit cushions ensure optimal comfort both underway and at anchor.

She is equipped with:

Electric windlass

Two DELTA anchors

Deck shower

Swimming ladder

Davits for dinghy

Mooring winches

Sprayhood

Reinforced bowsprit for Code 0 (2025)

Two forward trampolines

The trimaran configuration provides wide and secure side decks for safe movement onboard.

Safety Equipment / Miscellaneous

EPIRB

Life Jacket

Bilge Pump

Sails

Genoa Sail

Spinnaker

Main Sail

Sails Equipments Description
Cutter-sloop rig optimized for performance and versatility. Sail inventory includes: 60 m² fully battened Dacron mainsail 46 m² furling genoa 20 m² self-tacking jib 160 m² gennaker in tube The centreboard significantly enhances upwind performance and sail balance. The bowsprit was reinforced in 2025 for Code 0 capability.

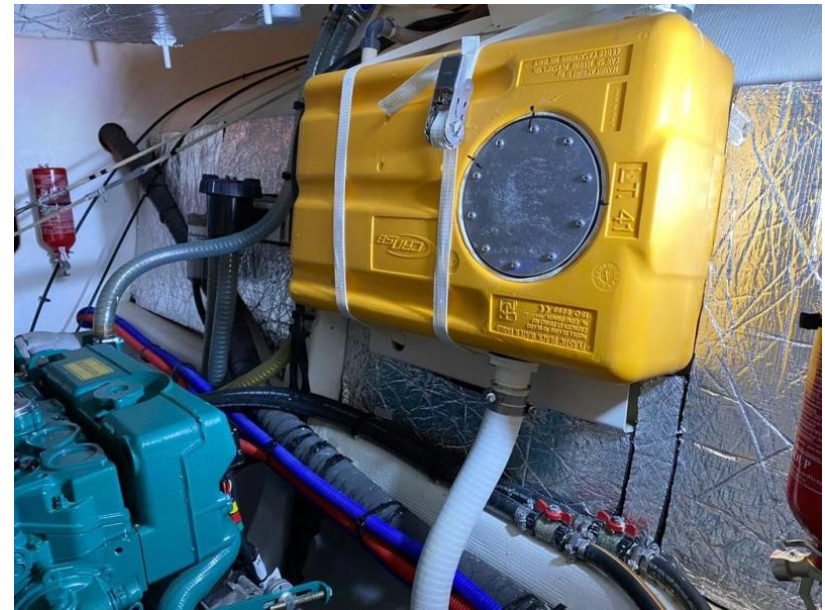












Version Charter / Charter Version

