



SALE PRE OWNED

lagoon 380 s2

195 000 € EX. VAT

Specifications

YEAR 2008	LENGTH 11.55	WIDTH 6.53	DRAFT 1.15
GUESTS CRUISING 10	CABINS 4	BATHROOMS 2	ENGINE MANUFACTURER Yanmar 3YM30AE
ENGINE HOURS 700	HORSE POWER 2 X 29 CV		

General

Type
catamaran**Brand**
lagoon**Model**
380 s2**Guests Cruising**
10**Current Location**
Valencia**Dimensions/performance**

Consumption (L/h)
4**Building/facilities**

Hull Material
fibra de vidrio**Hull Color**
Blanco**Amount Of Cabins**
4**Berths**
8**Number Of Bathrooms**
2

Engine Room

Engine
Yanmar 3YM30AE**Horse Power**
2x29CV**Engine Year**
2016**Engine Hours**
700**Fuel**
Diesel**Electricity/air Conditioning**

Engine Battery**Battery Charger****Battery Service****Inverter****Solar Panel****Navigation Equipment**

GPS**Tracer****Radar****Autopilot****Tridata****VHF****Navigation Compass****AIS****Sonar****Wind Instruments****Speedometer****Anchor****Galley/laundry/entertainment**

Oven**Fridge****Stove****Sink**

Deck Equipment

Windlass

Gangway

Swim Ladder

Navigation Lighting

Deck Shower

Sunbathing Cushions

Safety Equipment / Miscellaneous

EPIRB

Fire Alarm

Life Raft

Life Jacket

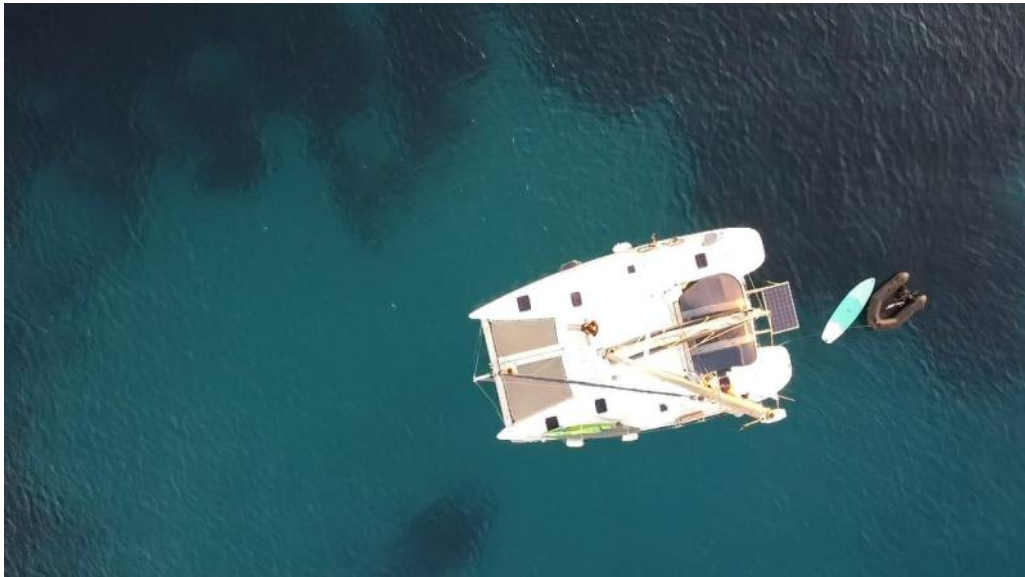
Bilge Pump

Sails

Genoa Sail

Spinnaker

Main Sail





Lagoon 38
BAFAH



Lagoon 38
BAFAH







Lagoon 38
BAFAH



Lagoon 38
BAFAH





