



**SALE PRE OWNED**

**dalla pieta Dp 58 hard top**

**PRICE UPON REQUEST**

## Description

Dalla Pietà DP 58 HT is an open hard-top of great charm, kept in impeccable condition thanks to careful management and numerous works carried out in recent years.

Powered by 2 x 1100 hp MAN V10 (about 1,200 hours axle line), it offers high-performance and reliable navigation, with a cruising speed of 27 knots and a maximum speed of 36 knots.

The outdoor spaces are designed for maximum comfort, with a large equipped cockpit, a complete outdoor galley and generous sundecks at the bow and stern. The interior offers 3 double cabins + 3 bathrooms, as well as a fourth cabin with independent access, ideal for crew or guests.

Numerous recent upgrades, including a new watermaker (2023), zero hull and renewed teak, make it ready to the buoy and without work to be carried out.

An excellent opportunity for those looking for quality, performance and elegance in a single solution.

Can be visited by appointment: 3477827000

Staging and technical:

Water pressure pump (doppio impianto autoclave sostituito), Batteries (2023), Deck Shower, 2 Hydraulic Flaps (Revisionati), Hard top (revisionato), Courtesy Lights, Gangway (revisione passerella con riverniciatura a polvere), Platform, Automatic Bilge Pump, Teak deck (teak plancetta e gradini poppa sostituito nuovo con massello da 1 cm), Open Cockpit, Teak Cockpit, Shorepower connector, Electric Windlass, swimming ladder, cockpit table.

## Specifications

LENGTH

**17.84**

WIDTH

**5.00**

DRAFT

**1.18**

FUEL TANK CAPACITY

**2585**

GUESTS CRUISING

**12**

CABINS

**3**

BATHROOMS

**1**

ENGINE MANUFACTURER

**MAN V10**

ENGINE HOURS

**1200**

HORSE POWER

**2 X 1100 CV**

**General**

---

<b>Type</b> motorboat	<b>Brand</b> dalla pieta	<b>Model</b> Dp 58 hard top	<b>Guests Cruising</b> 12
--------------------------	-----------------------------	--------------------------------	------------------------------

**Dimensions/performance**

---

<b>Weight (T)</b> 30.34	<b>Fuel Capacity (L)</b> 2585	<b>Cruising Speed (Nd)</b> 32.00	<b>Top Speed (Nd)</b> 37.00
----------------------------	----------------------------------	-------------------------------------	--------------------------------

**Building/facilities**

---

<b>Hull Material</b> Vetroresina	<b>Super Structure Material</b> Vetroresina	<b>Deck Material</b> Vetroresina	<b>Amount Of Cabins</b> 3
<b>Berths</b> 6	<b>Number Of Bathrooms</b> 1		

**Engine Room**

---

<b>Engine</b> MAN V10	<b>Horse Power</b> 2x1100CV	<b>Engine Hours</b> 1200
--------------------------	--------------------------------	-----------------------------

**Electricity/air Conditioning**

---

<b>Engine Battery</b>	<b>Battery Charger</b>
-----------------------	------------------------

**Navigation Equipment**

---

<b>GPS</b>	<b>Tracer</b>	<b>VHF</b>	<b>Navigation Compass</b>
<b>Sonar</b>	<b>Speedometer</b>	<b>Anchor</b>	

**Galley/laundry/entertainment**

---

<b>Microwave</b>	<b>Fridge</b>	<b>TV</b>
------------------	---------------	-----------

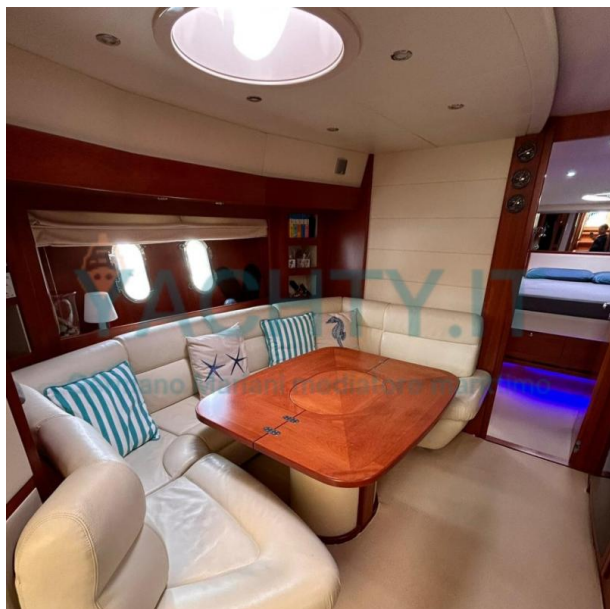
**Safety Equipment / Miscellaneous**

---

<b>Life Raft</b>	<b>Bilge Pump</b>
------------------	-------------------









  
DALLA PIETÀ YACHT  
MADE IN ITALY  
OFFICIAL SHIPYARD

