



**SALE PRE OWNED**

**sunreef yachts Supreme 68**

**2 400 000 € ALL TAX INCLUDED**

## Description

**SUNREEF SUPREME 68 POWER – 2017 | LUXURY POWER CATAMARAN | VAT PAID | SPANISH FLAG**

The Sunreef Supreme 68 Power perfectly embodies modern yachting: exceptional volumes, ultimate comfort and smooth cruising performance. This 2017 unit, professionally maintained and fully equipped, offers a true superyacht lifestyle whether for private use or high-end charter operations.

Available for viewing by appointment only in a marina in the Valencia region, this yacht stands out with her contemporary lines and unmatched living spaces. The “Supreme” concept delivers a seamless indoor-outdoor flow, with a panoramic saloon flooded with natural light and multiple relaxation areas designed for entertaining. The layout includes five spacious double guest cabins with seven bathrooms, complemented by two crew cabins, ensuring privacy and comfort for all onboard. The level of equipment is outstanding, featuring a jacuzzi, a fully equipped galley and amenities comparable to a luxury waterfront villa.

Powered by twin 500 HP engines with approximately 3,700 hours, and supported by two Kohler generators, she offers reliable and autonomous cruising. Technical equipment includes reversible air conditioning, watermakers, bow thrusters and a full domestic setup. Navigation is handled by a complete SIMRAD package with 4G radar, autopilot, Furuno Navtex/Inmarsat systems and satellite communications, enhanced by onboard Starlink Wi-Fi for permanent

## Specifications

YEAR  
**2017**

LENGTH  
**20.50**

WIDTH  
**10.50**

DRAFT  
**1.30**

GUESTS CRUISING  
**14**

CABINS  
**5**

BATHROOMS  
**7**

ENGINE MANUFACTURER  
**JOHN DEERE 500**

ENGINE HOURS  
**3800**

HORSE POWER  
**2 X 500 CV**

**General**

---

<b>Type</b> Multihull	<b>Brand</b> sunreef yachts	<b>Model</b> Supreme 68	<b>Guests Cruising</b> 14
<b>Current Location</b> Valencia			

**Dimensions/performance**

---

<b>Weight (T)</b> 192.00	<b>Cruising Speed (Nd)</b> 12.00	<b>Top Speed (Nd)</b> 25.00
-----------------------------	-------------------------------------	--------------------------------

**Building/facilities**

---

<b>Hull Material</b> POLYESTER	<b>Deck Material</b> Teck	<b>Amount Of Cabins</b> 5	<b>Berths</b> 10
<b>Number Of Bathrooms</b> 7			

## Engine Room

---

**Engine**  
JOHN DEERE 500

**Horse Power**  
2x500CV

**Engine Year**  
2017

**Engine Hours**  
3800

**Propellers**  
5 Blade

**Fuel**  
Diesel

**Bow Thruster**

## Electricity/air Conditioning

---

**Engine Battery**

**Battery Charger**

**Battery Service**

**Generator**

**Generator 2**

**Inverter**

**Air Conditioning**

**Heating System**

**Water Maker**

**Navigation Equipment**

---

<b>GPS</b>	<b>Tracer</b>	<b>Radar</b>	<b>Autopilot</b>
<b>VHF</b>	<b>Navigation Compass</b>	<b>AIS</b>	<b>Sonar</b>
<b>Anchor</b>	<b>Flybridge</b>		

**Description Navigation Equipment**

**Navigation pack SIMRAD (autopilot, 4G radar, ...), Navtex/inmarsat Furuno, Satcom, Rear and forward cameras, Starlink Maritime internet Wifi, TV, 1 LCD & DVD in saloon and 5 TV sets in cabins, Hifi 5.1 Surround in saloon and cabins (radio/MP3 player, bluetooth, Android & Airplay system),**

**Galley/laundry/entertainment**

---

<b>Oven</b>	<b>Microwave</b>	<b>Freezer</b>	<b>Grill</b>
<b>Fridge</b>	<b>Stove</b>	<b>Sink</b>	<b>Dishwasher</b>
<b>Ice Machine</b>	<b>TV</b>		

**Description Entertainment Equipment**

**Starlink Maritime internet Wifi, TV, 1 LCD & DVD in saloon and 5 TV sets in cabins, Hifi 5.1 Surround in saloon and cabins (radio/MP3 player, bluetooth, Android & Airplay system),**

## Deck Equipment

---

Windlass

Gangway

Swim Ladder

Hydraulic Platform

Mooring Winch

Navigation Lighting

Teak Deck Cockpit

Bimini Top

Deck Shower

Sunbathing Cushions

Underwater Lights

## Safety Equipment / Miscellaneous

---

EPIRB

Fire Alarm

Life Raft

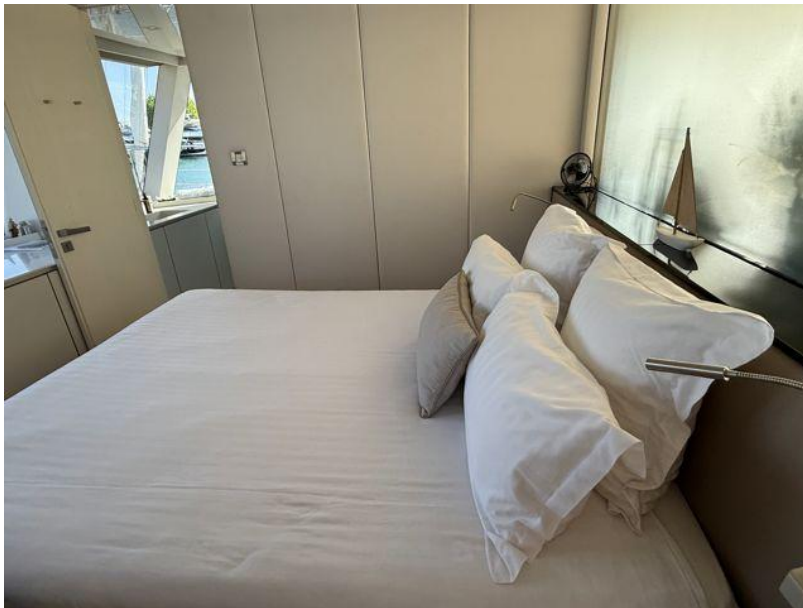
Life Jacket

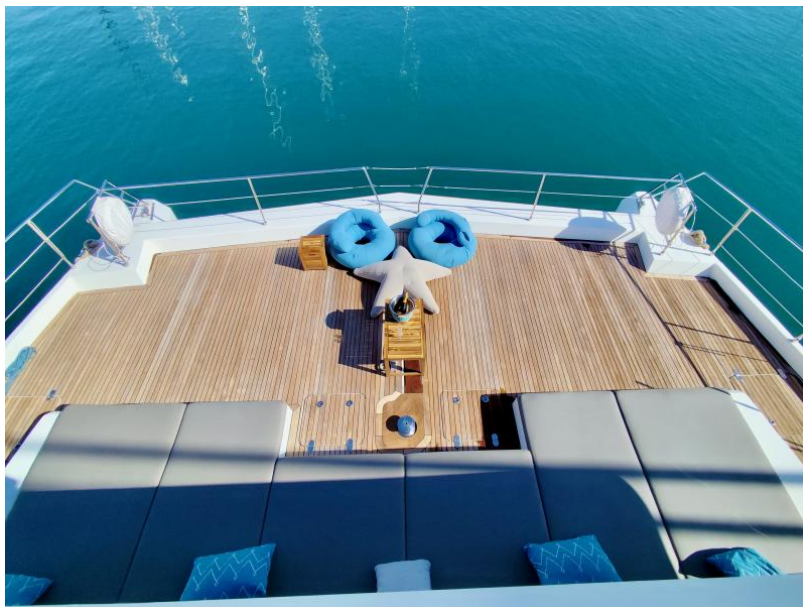
Bilge Pump









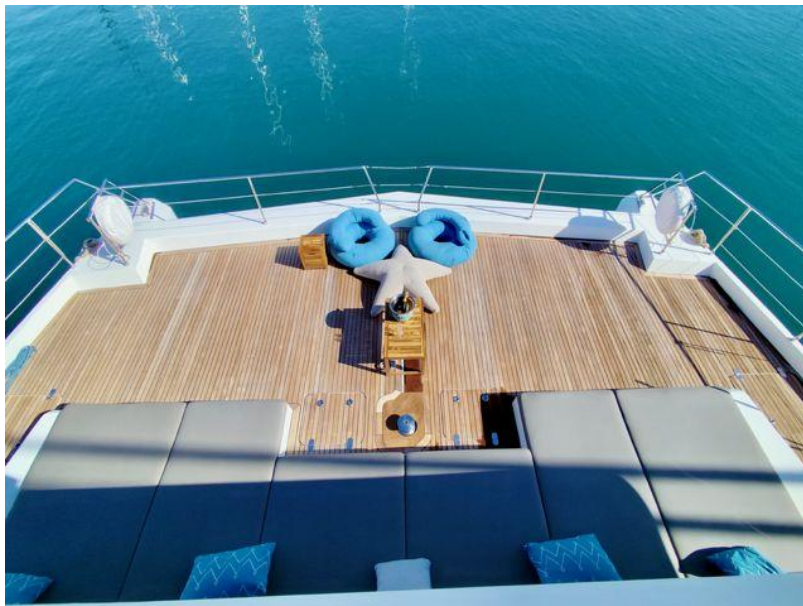


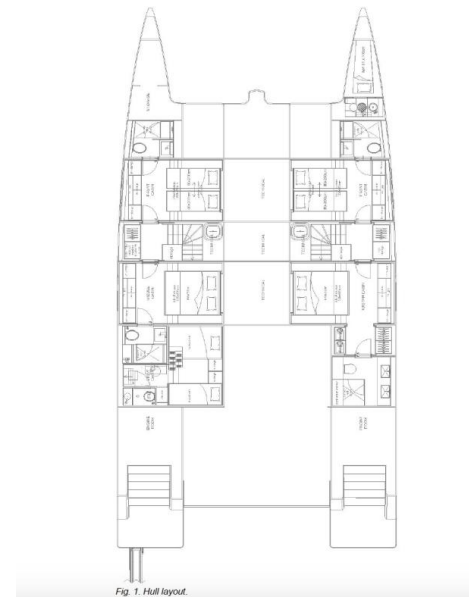












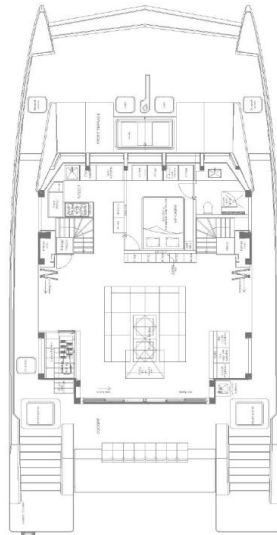


Fig. 2. Deck layout.

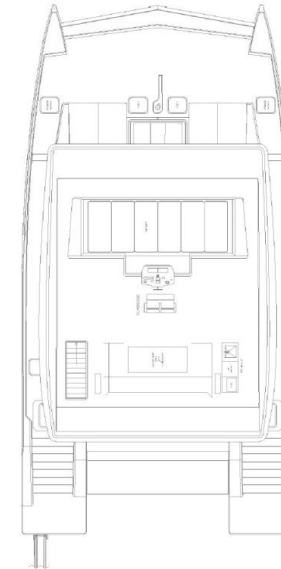


Fig. 3. Flybridge layout.

