



SALE PRE OWNED

Gamma 20

1 380 000 € ALL TAX INCLUDED

## Specifications

YEAR	LENGTH (M)	WIDTH (M)	DRAFT (M)
2012	20.50	5.90	1.50
FUEL TANK CAPACITY (L)	GUESTS CRUISING	CABINS	BATHROOMS
5500	12	3	1
ENGINE MANUFACTURER	HORSE POWER		
Yanmar DI 12 68	2 X 650 HP		

## Description

---

Gamma 20, a displacement-type yacht with a steel hull and aluminium deckhouse: a substantial vessel, designed for extended cruises, long stays on board and sailing in the utmost comfort.

The interior, featuring 3 cabins, 4 bathrooms and a crew cabin, offers generous spaces, privacy and an ideal living environment for family and guests. The on-board equipment, including 220V generators, a watermaker and a Starlink satellite system, enhances autonomy, independence and the quality of life on board.

Cruising is made more comfortable by the stabilisers, whilst the bow thruster, stern thruster and Yacht Controller facilitate manoeuvring even in confined spaces. The flybridge with BBQ, the large cockpit, the gangway and the electro-hydraulic platform make outdoor living comfortable, natural and perfectly integrated with the sea.

A solid, elegant cruiser, truly designed for those who wish to sail for long periods, experience the sea independently and enjoy life on board without compromise.

The data provided in this brochure are not to be considered contractual.

Navigation equipment:

AIS, Rudder angle indicator (Raymarine ST60), Radar Antenna (Raymarine - Super HD digital), Electronic engine control (Yanmar), On-Board Computer, 3 Odometer (Raymarine Axiom 12"), 4 Display (Raymarine - 4xST70), Consumption monitor (Yanmar), Autopilot (Raymarine ST70), 3 Plotter with GPS antenna (Raymarine Axiom 12"), Radar (Raymarine), 2 VHF Radio (Raymarine), Co-pilot seat (Sul Fly), Wind Station (Raymarine), Engine Measuring Instruments (Yanmar), Satellite Phone (Thrane&Thrane), Yacht controller.

Staging and technical:

Fume/Gas Detector, Engine Alarm (Yanmar - Elettronica i5601E), Alternator, Anchor (Inox + catena 100mt diam), Deck Suction of Dirty Water, Water pressure pump, 12 Batteries (Servizi: 12x2V 1000A 24V + Avviamento: AGM 12V 160A + Generatori: AGM 12V 90A), Teak Side Decks, 2 Shore power cable, Special Colour (Champagne + Sovrastruttura bianca), 2 Deck Shower (Hot/Cold), Twin Steering, Directional Spotlight (Jabsco), Anchor mount, Hydraulic Flaps (Bennett - Elettro idraulici), Fire Extinguishing System, Anchor Chain Washdown, Courtesy Lights, Underwater lights, Battery Monitor (Victron Energy), Gangway (Besenzoni Elettroidraulica), Platform (H+B Technics - Elettroidraulica), Waste Water Tank Drain Pump, Automatic Bilge Pump, Manual Bilge Pump, Teak deck, Entry door (Inox e vetro oscurato), Side door (Lato sinistro), Aft Cockpit, Teak Cockpit, 2 Shorepower connector (2 Shore power 30 A), Water harbor connector system, Electronic instrumentation repeater (Cockpit sul fly), Hydraulic Windlass, swimming ladder, Saddles for tender, Stabilizers (Naiad - Pinne stabilizzatrici Dynamics. Statici attivabili anche a barca ferma), cockpit table (Ampio tavolo per 8/10 pax con piano in marmo), Horn, Stern Winches (Vetus - Doppia stazione ergonomica con winch elettrici), Bow Winches.

**Domestic Facilities onboard:**

Warm Water, Air Conditioning (Climma (hot/cold)), BBQ/Grill (Kenyon - Custom sul fly), Warm Water System (Kabola), Satellite internet connection (Starlink), Light Dimmer, Watermaker (Idromar International -180 lt/ora), Waste Water Plant, Fuel Tank Indicator, Water Tank Meter, Waste Water Tank Meter, Engine oil pressure gauge (Yanmar - Elettronica i5601E), Engine temperature gauge (Yanmar - Elettronica i5601E), Inverter (Victron Energy - Blue power 2x100A 230V), Interior wooden floor, 12V Outlets, 220V Outlets, Black Water Tank, Water System, Voltmeter, 4 Electric Toilet.

**Entertainment:**

Speakers (Bose con subwoofer), Satellite TV antenna, Satellite Decoder, DTV, TV Lift Mechanism (nel Salone), 2 Radio AM/FM (Fusion), Hi-Fi, 4 TV (1x55 pollici a scomparsa nel Salone + 1 in ogni cabina).

**Kitchen and appliances:**

Dryer (Bosch), Galley, Oven (Siemens), 2 Deck Refrigerator (2 sul mobile del fly), 2 Refrigerator (Melchioni Family all'ingresso del salone + Liebherr Frigorifero da casa in cucina), ICE Maker (Isotherm - Nel pozzetto), Washer dryer (Bosch - Lavasciuga EcoSilence), Dishwasher (Siemens), Microwave Oven (Panasonic), Electric hot plate (Siemens - 4 Fuochi), Winecooler (Climadiff).

**Upholstery:**

Bimini (Chiusure laterali e posteriori del pozzetto in ombreggiante traspirante e chiusure totali), Cockpit Cover, Bow Cushions (Prendisole a prua), Fly Bridge Cushions, Cockpit Cushions (Sedute e schienali del divano al tavolo), Mattresses, Blackout Curtains, T-Top Cover (Teli di copertura dei divani e cuscinerie su fly, prua, pozzetto), Window Cover, Instrument Cover (Sul fly).

**Accessories notes:**

Besenzoni control armchair on the dashboard electrically adjustable in height and distance from the dashboard.

Dimmable LED lights.

Electric hatch from the main deck (Saloon) to the upper deck (Flybridge).

Numerous refitting works have already been carried out. The complete list is available.

### General

---

Type motorboat	Model Gamma 20	Guests Cruising 12	Current Location Liguria
-------------------	-------------------	-----------------------	-----------------------------

### Dimensions/performance

---

Weight (T) 54.00	Fuel Capacity (L) 5500	Cruising Speed (Nd) 11.00	Top Speed (Nd) 14.00
---------------------	---------------------------	------------------------------	-------------------------

### Building/facilities

---

Hull Material Acciaio	Hull Color Champagne + Sovrastruttura bianca	Super Structure Material Alluminio	Deck Material Alluminio
Amount Of Cabins 3	Berths 7	Number Of Bathrooms 1	

### Engine Room

---

Engine Yanmar DI 12 68	Horse Power 2x650CV	Propeller Type 2 x 4 Pale fisse diam.60cm	Fuel Diesel
Stern Thruster	Bow Thruster		

### Electricity/air Conditioning

---

Engine Battery	Battery Charger	Generator	Air Conditioning
Heating System			

### Navigation Equipment

---

Radar	Autopilot	VHF	Navigation Compass
Wind Instruments	Speedometer	Anchor	Flybridge

### Galley/laundry/entertainment

---

Oven	Microwave	Freezer	Fridge
TV			

### Deck Equipment

---

Navigation Lighting	Bimini
---------------------	--------

### Safety Equipment / Miscellaneous

---

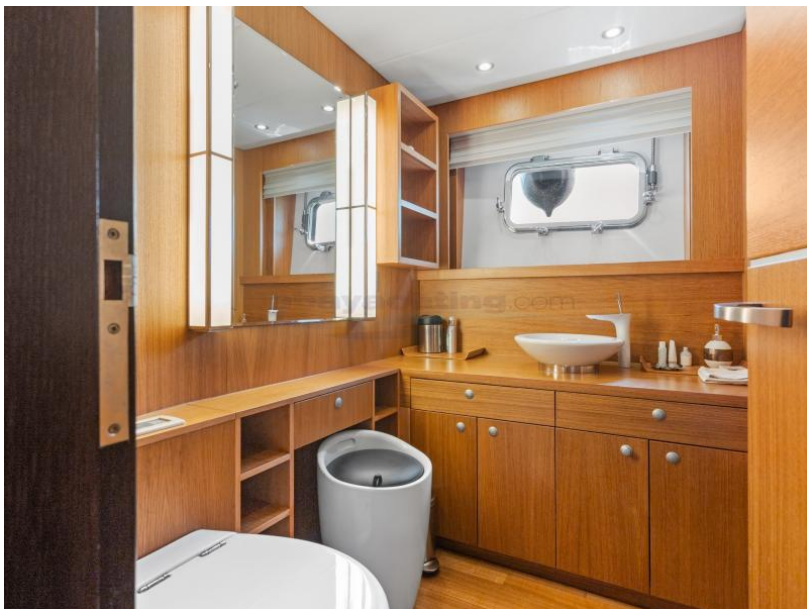
Bilge Pump

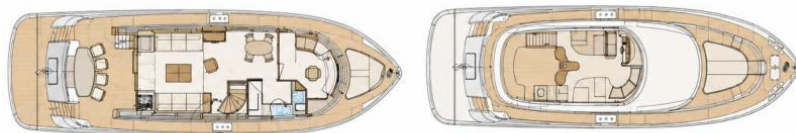












[abayachting.com](http://abayachting.com)

