



SALE PRE OWNED

alfamarine Alfamarine 16,50 fly

96 000 € ALL TAX INCLUDED

Specifications

| | | | |
|---|------------------------------|----------------------------------|--------------------------|
| YEAR 1984 | LENGTH (M) 16.32 | WIDTH (M) 5.10 | DRAFT (M) 1.03 |
| FUEL TANK CAPACITY (L) 3500 | GUESTS CRUISING 12 | CABINS 3 | BATHROOMS 1 |
| ENGINE MANUFACTURER General Motors (G.M.) | ENGINE HOURS 180 | HORSE POWER 2 X 650 HP | |

Description

MOTORYACHT f.t. 16,32

ALWAYS MAINTAINED WITH THE UTMOST CARE

4 double cabins - 4 bathrooms with showers - Side door galley area - Crew cabin with bow access

ENGINES LANDED AND BROUGHT TO ZERO HOURS

2025 new generator - bow and stern cabin wall paneling - 4 new batteries

2024 New Kitchen Refrigerator Compressor - 4 New Batteries

2023 hull brought to zero - new external cushions - new winter and summer awnings

2020 new indoor and outdoor flooring Flex teak

Navigation equipment:

Rudder angle indicator, Display, VHF Radio (Icom IC-M601).

Staging and technical:

Engine Alarm, 2 Water pressure pump, 8 Batteries (4 nuove 2024 - 4 nuove 2025), Teak Side Decks, Guard rail, Deck Shower, Directional Spotlight, Hydraulic Flaps, Flaps Indicators, Courtesy Lights, Gangway, Platform (maggiorata in teak), Automatic Bilge Pump, Entry door, 2 Side door, Teak Cockpit, Shorepower connector, Water harbor connector system, Rollbar, Electric Windlass, swimming ladder, Saddles for tender, cockpit table, Horn, Stern Winches.

Domestic Facilities onboard:

Air Conditioning (Condaria), Warm Water System (elettrico), Fuel Tank Indicator, Water Tank Meter, Interior wooden floor (in simil teak), 12V Outlets, 220V Outlets, 3 Electric Toilet.

Security equipment:

Barometer, First aid kit, Safety equipment beyond 50 miles, PFDs, Lifebuoy With Safety Rope and Light Buoy.

Entertainment:

Speakers, Radio AM/FM, Hi-Fi, 5 TV (LCD).

Kitchen and appliances:

Galley, 2 Refrigerator, Ceramic hot plate.

Upholstery:

Cockpit Cover (chiusura invernale), Cushions, Bow Cushions, Fly Bridge Cushions, Window Cover, Boat cover (totale da prua a poppa), Instrument

Cover (sul fly), Seat Cover (sul fly), Sunshade (ombreggiante laterale a poppa).

Accessories notes:

Wet bar on the Fly

General

Type
motorboat

Brand
alfamarine

Model
Alfamarine 16,50 fly

Guests Cruising
12

Current Location
Mare adriatico

Dimensions/performance

Weight (T)
22.60

Fuel Capacity (L)
3500

Cruising Speed (Nd)
23.00

Top Speed (Nd)
28.00

Building/facilities

Hull Material
Vetroresina

Super Structure Material
Vetroresina

Deck Material
Vetroresina

Amount Of Cabins
3

Berths
6

Number Of Bathrooms
1

Engine Room

Engine
General Motors (G.M.)Horse Power
2x650CVEngine Hours
180Propeller Type
3 paleFuel
Diesel

Bow Thruster

Electricity

Engine Battery

Battery Charger

Generator

Air Conditioning

Heating System

Navigation Equipment

GPS

Tracer

Radar

Autopilot

VHF

Navigation Compass

Sonar

Speedometer

Anchor

Flybridge

Galley/laundry/entertainment

Oven

Fridge

TV

Deck Equipment

Navigation Lighting

Deck Shower

Safety Equipment / Miscellaneous

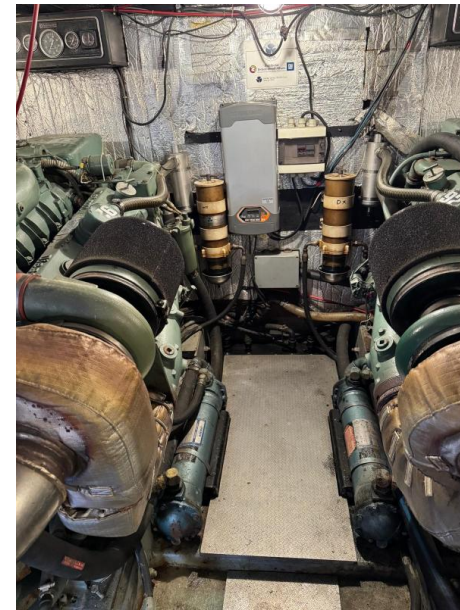
Life Raft

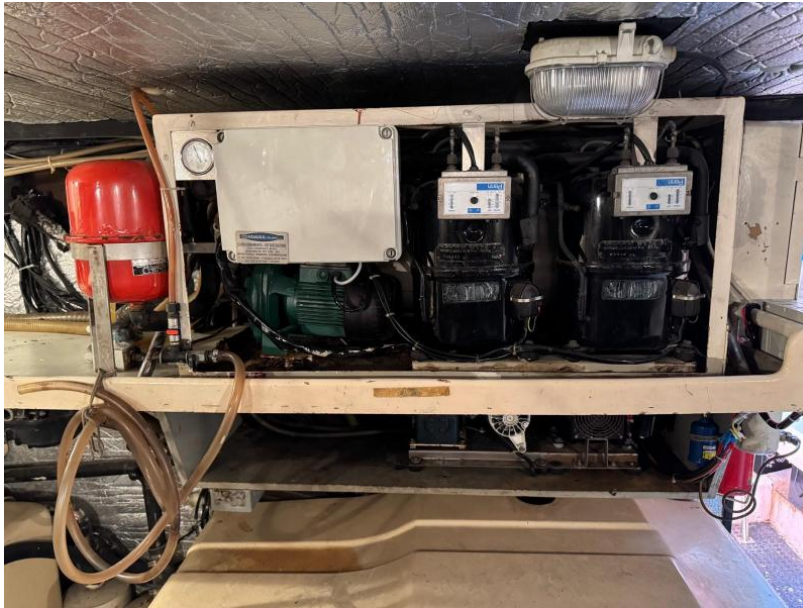
Bilge Pump











Alfamarine Alfamarine 16,50 Fly

