



SALE NEW

beneteau Swift trawler 54

RCMARINE

2 212 517 € All Tax Included

Specifications

YEAR

2025

LENGTH

17.13

WIDTH

4.98

GUESTS CRUISING

14

CABINS

3

BATHROOMS

2

ENGINE MANUFACTURER

CUMMINS

HORSE POWER

2 X 550 CV

General

| | | | |
|------------------|----------|------------------|-----------------|
| TYPE | BRAND | MODEL | GUESTS CRUISING |
| Motorboat | beneteau | Swift trawler 54 | 14 |
| CURRENT LOCATION | | | |
| Antibes | | | |

Dimensions / Performance

| | |
|---------------|------------|
| AIR DRAFT (M) | WEIGHT (T) |
| 6.58 | 9999.99 |

Building / facilities

| | | | |
|---------------|---------------|------------------|--------|
| HULL MATERIAL | DECK MATERIAL | AMOUNT OF CABINS | BERTHS |
| POLY | teak | 3 | 8 |
| BATHROOM(S) | | | |
| 2 | | | |

Engine room

| | | | |
|---------|------------------------------------|-------------|------------|
| ENGINE | NUMBER OF ENGINES HORSE POWER (CV) | ENGINE YEAR | PROPELLERS |
| CUMMINS | 2 x 550 | 2024 | InBoard |



RCMARINE



RCMARINE



RCMARINE



RCMARINE



RCMARINE



RCMARINE



RCMARINE



RCMARINE



RCMARINE



RCMARINE



RCMARINE



RCMARINE



RCMARINE



RCMARINE



RCMARINE



RCMARINE



RCMARINE



RCMARINE



RCMARINE



RCMARINE



RCMARINE



RCMARINE



RCMARINE



RCMARINE



RCMARINE



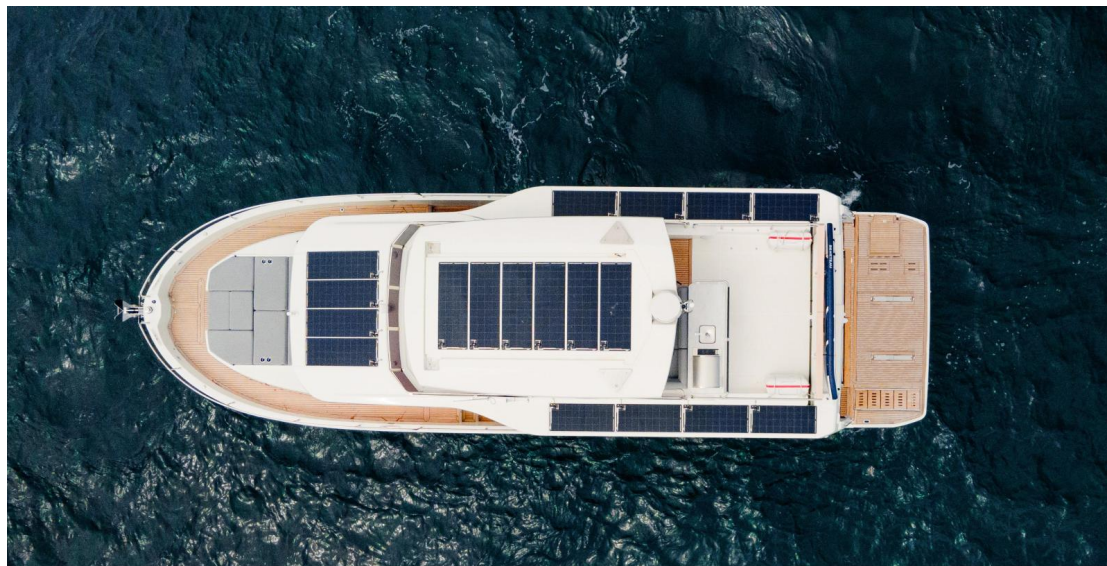
RCMARINE



RCMARINE



RCMARINE



RCMARINE



RCMARINE