

SALE PRE OWNED

Custom 33m

2 200 000 € + VAT

Description

Witsen & Vis Custom 33M from 1971, refit in 2018. Jamaican flag. VAT not paid

This luxurious stabilized motor yacht with 4 cabins was created by Marc Picaut and built by Witsen & Vis at the Dutch shipyard in Alkmaar. It was delivered to the owner in 1971, and a full aesthetic and mechanical restoration was carried out in 2018. It has a metal hull and an aluminum superstructure.

The interior refit of this luxury yacht was performed by Estudio Ojinaga in Barcelona, while the owner's representatives oversaw all the technical details. High-quality finishes were used to modernize and reorganize its comfortable rooms.

Witsen & Vis was one of the first steel-hull shipyards to export to the United States, as well as a founding member of the Feadship association. M/Y Ra has a luxurious layout with two deck levels, designed to please the most discerning seafarer. The large aft deck leads to the spacious main deck salon and owner's cabin. The large VIP cabin and two guest cabins are located on the lower deck. The interior, hull, and superstructure underwent a major refit in 2018, leaving the interior as new and elegantly improving the layout. She is both strong, robust, and elegant.

Ultrasound test of the hull and replacement of steel plates where necessary
Yacht fully repainted in AWLGRIP quartz gray Overhaul of existing systems New 30 kVA three-phase transformer 400V 230V Stainless steel anchor protection plates CCTV New LOPO navigation lights New air conditioning unit New watermaker New boilers New navigation equipment Full engine service New teak deck on the

Specifications

YEAR

1971

WIDTH

6.10

GUESTS CRUISING

8

BATHROOMS

3

HORSE POWER

2 X 1500 CV

LENGTH

30.30

DRAFT

3.30

CABINS

4

ENGINE MANUFACTURER

MTU 1500 CV De 2018

General

TYPE	MODEL	GUESTS CRUISING	CURRENT LOCATION
Motorboat	Custom 33m	8	Barcelona

Dimensions / Performance

CRUISING SPEED (ND)	TOP SPEED (ND)
10	16

Building / facilities

HULL MATERIAL	AMOUNT OF CABINS	BERTHS	BATHROOM(S)
Steel	4	8	3

Engine room

ENGINE	NUMBER OF ENGINES HORSE POWER (CV)	ENGINE YEAR	PROPELLERS
MTU 1500 CV de 2018	2 x 1500	2018	5 pales
FUEL	STERN THRUSTER	BOW THRUSTER	STABILIZERS
Diesel			

Electricity / air conditioning

ENGINE BATTERY	BATTERY CHARGER	SERVICE BATTERY	GENERATOR
INVERTER	AIR CONDITIONING	HEATING SYSTEM	WATER MAKER

Navigation equipment

GPS	MAIN OPERATING SYSTEM	TRACER	RADAR
AUTO PILOT	VHF	NAVIGATION COMPASS	INDICATOR
PIRATE LIGHTHOUSE	SONAR	SPEEDOMETER	ANCHOR
FLYBRIDGE			

Galley / Laundry / Entertainment

OVEN	MICROWAVE	FREEZER	FRIDGE
STOVE	SINK	DISHWASHER	WASHING MACHINE
ICE MACHINE			

Deck equipment

WINDLASS	GANGWAY	SWIM LADDER	MOORING WINCH
CRANE	NAVIGATION LIGHTING	WINDSHIELD WIPERS	TEAK DECK COCKPIT
DECK SHOWER			

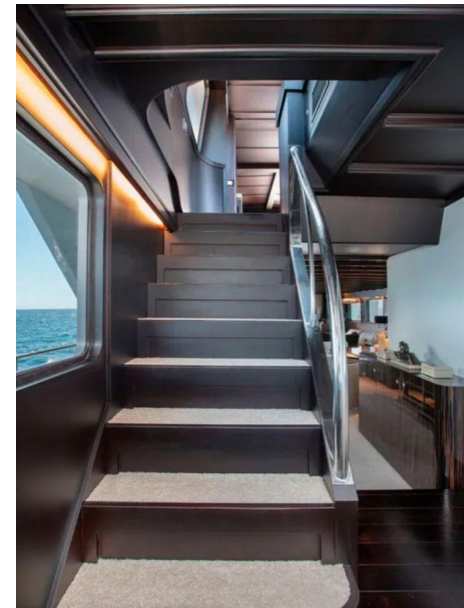
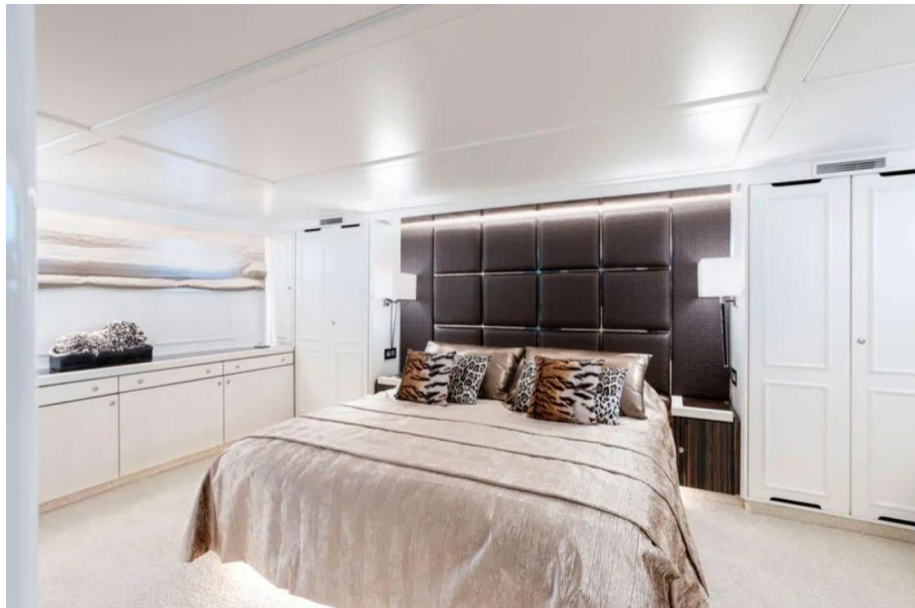
Safety equipment / miscellaneous

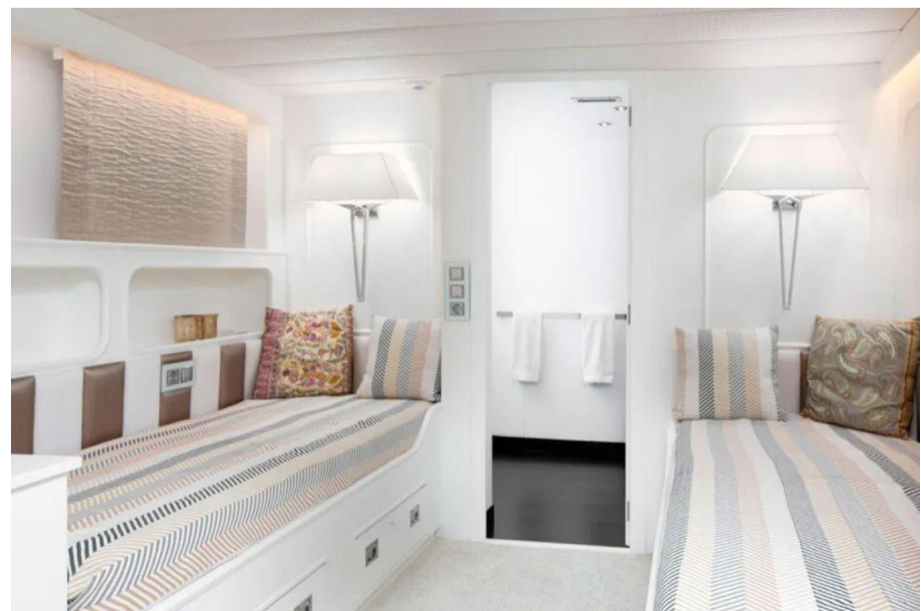
EPIRB	FIRE ALARM	LIFE RAFT	LIFE JACKET
BILGE PUMP			



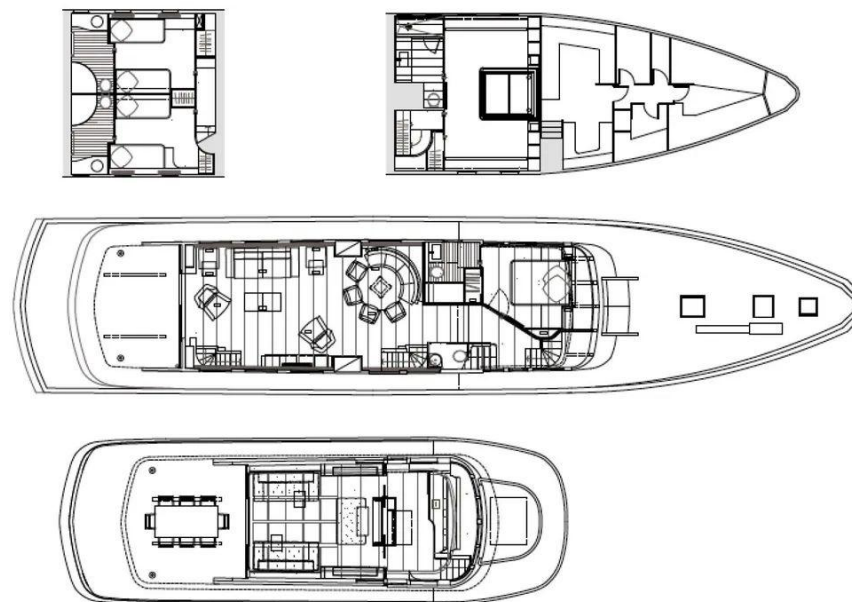












LITS REFIT 2018

- Hull ultrasound test and replacement of steel plates where necessary
- Yacht fully repainted in Quartz Grey de AWLGRIP.
- Overhaul of existing systems.
- New transformer de 30 kVA trifásic 400V 230V
- Stainless steel anchor protection plates
- CCTV
- New LOPO Navigation lights
- New Aircon Unit
- New Watermaker
- New Boilers
- New Navigation Equipment
- Engines Full service.
- New Teak deck Uper Deck
- Superstructure extension for Upper deck Saloon
- VIP Cabin in Main Deck
- Full interior design project done by Ojinaga
- Completely new interior finishings
- Comercial Compliance modifications
- New Galley and crew area finishings
- NewStern Configuration
- Bow and Stern Hydraulic Thrusters
- Day head in Main Deck
- New AV Systems in all the yacht
- Stabilizers checking
- Replacement of all seacocks
- Installation of CO2 in engine room
- Replacement of all hydraulic and sewage pipping
- New bilge pumps
- New AV Systems
- Installation of internal WIFI Network

