



SALE PRE OWNED

magazzu Stryker 9.90

Description

Excellent specimen of Striker 9.90 / M11 spider,

WORKS CARRIED OUT 2022:

Installation of new engines, new feet, electronic throttles, new trim pumps connected all in home automation on the 2 Garmin console; Replacement Tubular fabric Hypalon "Orca 866 Grey Anthracite perlage"; Complete repainting of living work and dead work with matt black and transparent enamel "Lechler"; renovation of all teak tops with Burma teak planking of first choice; removal of all analog instrumentation and installation of digital instrumentation with the creation of a home automation system; Renovation of the electrical system, installation of 2 Garmin Touchscreen devices of 12 and 9 inches interactive with each other; Installation of new Garmin VHF with relative antenna; Installation of Fusion wi-Fi system; Installation Marine acoustic system "JL" (4 speakers Marine JL M6 880X with transfective LED lighting + 1 LED sub woofer + marine amplifier M 7005; Installation of the new Plastimo backlit compass; Installation of a swivel bow search beacon with double controls; Complete renovation of courtesy lighting system and installation of new LED lights (16); Installation n' 2 underwater stern projectors Lumitec SeaBlaze X2 DC 5000 lumens; Installation of removable base light with bayonet mount; Installation n. 4 new bilge pumps (1 bow / 1 central / 2 engine compartment, one of which is automatic); Installation of the new Jabsco Autoclave; Installation Inverter Victron Energy 3000 W.

Installation of a new battery charger; Realization of refrigeration systems with installation No. 2 Frighi Isotherm; Realization and installation of hob and sink;

Specifications

YEAR

2007

WIDTH

3.60

ENGINE MANUFACTURER

**Mercruiser MCM 6.2L
350 DTS + Bravo III**

LENGTH

9.90

GUESTS CRUISING

18

HORSE POWER

2 X 350 CV

General

TYPE	BRAND	MODEL	GUESTS CRUISING
RIB	magazzu	Stryker 9.90	18
CURRENT LOCATION			
Mar tirreno			

Engine room

ENGINE	NUMBER OF ENGINES HORSE POWER (CV)	BOW THRUSTER
MerCruiser MCM 6.2L 350 DTS + Bravo III	2 x 350	

Electricity / air conditioning

ENGINE BATTERY	BATTERY CHARGER

Navigation equipment

NAVIGATION COMPASS	SONAR	ANCHOR

Safety equipment / miscellaneous

BILGE PUMP



26 agosto 2022



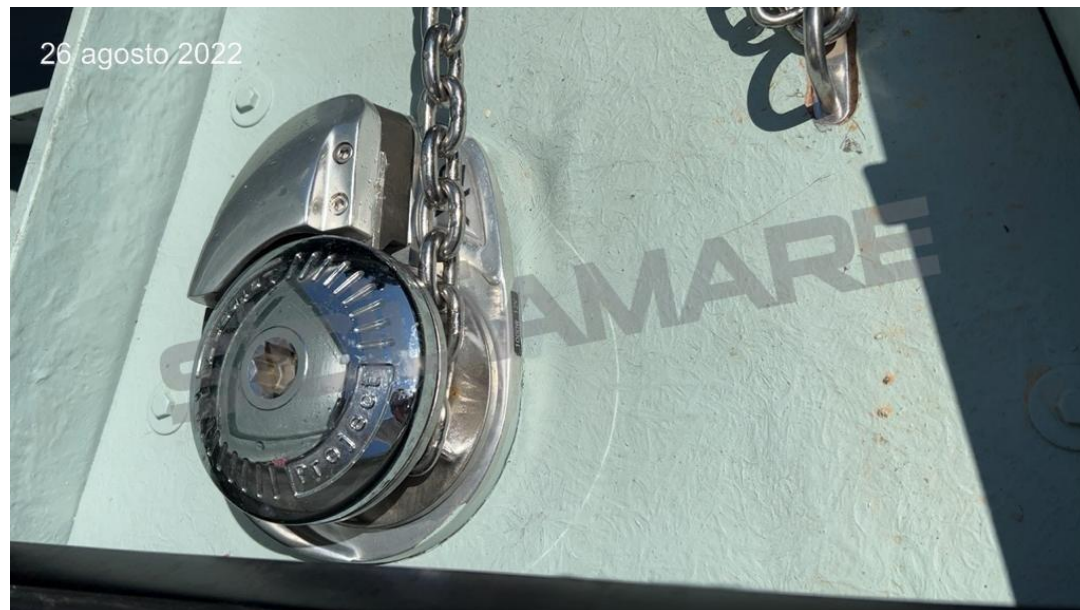
26 agosto 2022



26 agosto 2022



26 agosto 2022



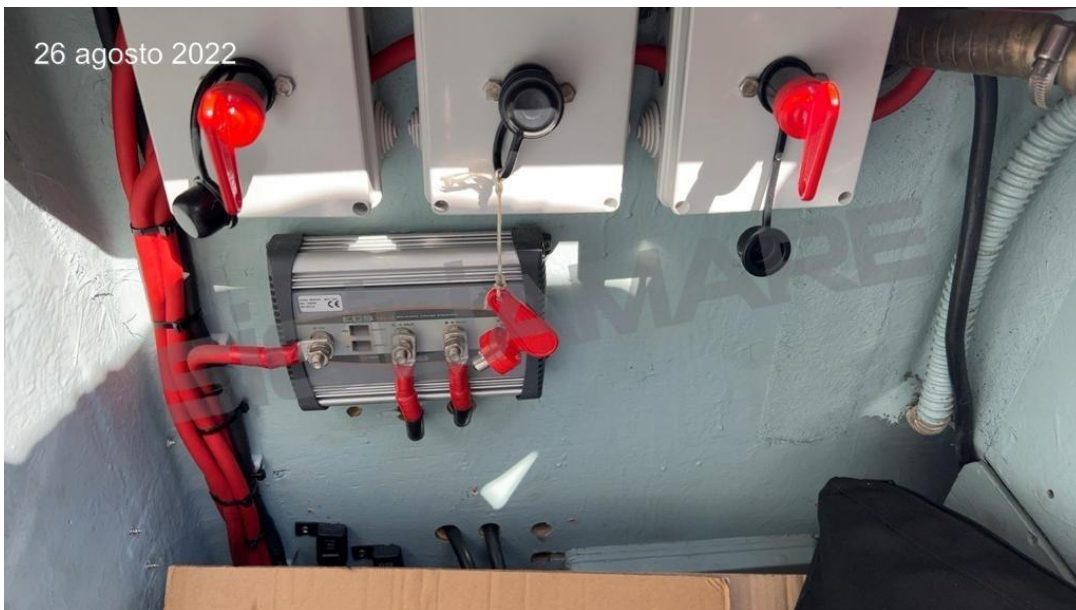
26 agosto 2022



26 agosto 2022



26 agosto 2022



26 agosto 2022





26 agosto 2022

